

Milang Community News

A journal of the Milang & District Community Association
Supporting the communities of Milang, Ashbourne, Clayton Bay,
Finniss, Strathalbyn and Langhorne Creek

\$2.50

May 2026



FROM THE EDITOR

Welcome to the May 2026 edition of the Milang Community News. What a busy month April was around town. The Easter Market was a huge success and we were blessed with perfect weather, please see page 15 for some photos of the day. Also the ANZAC Day Service was extremely well attended and again we had perfect weather (see page 8). Also, a huge congratulations to the Ladies Bowling team for winning the Grand Final, please see pages 40 & 41 for all of the details.

In May we will be hosting the Cancer Council's Biggest Morning Tea at the Milang Institute— please feel free to come along and support this important event— there will be a delicious morning tea as well as some great raffle prizes, see page 5 for the details. Please stay safe and have a great month.

Cheers

Cathy Fish

editor@milang.org.au

We acknowledge the Ngarrindjeri people on whose land we meet and we pay our respects to the Elders past and present.

Ngarrindjeri Vision for Country: Kungun Ngarrindjeri Yunnan (Listen to what Ngarrindjeri people have to say)

“Our Lands, Our Waters, Our People, All Living Things are connected. We implore people to respect our Ruwe (Country) as it was created in the Kaldowinyeri (the Creation). We long for sparkling, clean waters, healthy land and people and all living things. We long for the YarluwarꞤRuwe (Sea Country) of our ancestors. Our vision is all people Caring, Sharing, Knowing and Respecting the lands, the waters and all living things.” - From Ngarrindjeri Nation Yarluwar-ruwe plan 2006

Contributions to the Milang Community News

The Editor eagerly looks forward to receiving articles and welcomes suggestions from community members for stories and photographs.

Email: editor@milang.org.au

Mail: PO Box 416 MILANG SA 5256

Copy should reach the editor by the **21st of each month** and must include the contributor's name, address and contact details. **Articles of fewer than 500 words are encouraged.**

Milang Community News reserves the right to refuse advertisements and other submissions. The editor reserves the right to change content for accuracy or where space is limited.

If you would like the Milang Community News photographer to attend an event to photograph subjects of local interest, please email the editor

Email: editor@milang.org.au or leave a message at MOSHCC 85370687.

Where to buy the Milang Community News available at \$2.50 per copy

- **Milang Mini Mart**
- **Milang Community Centre (MOSHCC)**
- **Milang Post Office**
- **Milang Bakery**
- **Milang Caravan Park**
- **Bespoke Delights**
- **Finniss General Store**
- **The Local—Clayton Bay**

DISCLAIMER

The Milang Community News is produced on behalf of the Milang and District Community Association Inc (MADCA).

The committee of the Association accepts no responsibility for damage of any form which may occur as a result of the contents of this publication.

The opinions expressed in the Milang Community News are not necessarily those of MADCA.

ADVERTISING RATES

Full page	\$120.00
Half page	\$70.00
Quarter page	\$40.00
Eighth page	\$25.00
Advert set up	\$35.00

For all advertising contact
Cathy Fish

Email: editor@milang.org.au or leave a message at MOSHCC 85370687

Love the Milang Community News and want to save the trees ?

Go to <https://milang.org.au/> and download your free copy OR simply call MOSHCC reception on 8537 0687 and let us know your email address to receive your FREE monthly News Letter.

Chairperson's Monthly Report

April 2026



The monthly MADCA Committee meeting was held on Thursday 23rd of April 2026 with apologies from John Whyte, Michael Galea and Suzanne Haeusler.

Lakes Home Care Manager Annie Whyte presented the Lakes Home Care monthly Management and Clinical Governance Reports. Based on March 2026 data, Lakes Home Care is meeting its clinical governance obligations following transition to the new Federal Government "Support at Home" program which took effect on the 1st of November 2025.

MADCA Committee noted progress to date and endorsed the continued focus on audit readiness, workforce capability and governance maturity. External consultants have been engaged by Management to review all aspects of LHC operation.

MADCA CEO Stuart Jones presented his monthly report :

- Alexandrina Council is requesting of MADCA a 3 year collaboration agreement towards more stable certainty and service delivery across our programs.
- Youth Hub renovation is going ahead albeit delay in the availability of Building trades.
- Community Gardens transfer lease from SA Education Dept is progressing.
- Repairs to Milang main Jetty following the Oscar W incident are progressing following Engineers report towards the Insurance claim.
- Council have to agreed gate off the secondary Jetty to discourage dogs scaring off the birdlife.

Grant applications:

- BDM Group has agreed to sponsor restoration of Butter Factory Plans, thanks to Vice Chairperson Mike Galea for his submission.
- Application for GrainCorp grant up to \$20K towards Butter Factory rainwater tank mural has been submitted.
- SA Water/Community Partnership program grant up to \$10K to support Community Gardens irrigation upgrade is underway.
- Revision of Grants SA approval amended to better suit current garden needs.

Volunteers:

- Volunteers number 105 as at early April. Welcome to the new volunteers.
- Harmony week /Friday Feast (20th March), Milang Easter Market (4th of April), Stickybeaks trip to Alawoona and Anzac Day Commemoration were all well attended.
- MADCA Food Safety Policy document was submitted and ratified by the MADCA Committee.

Butter Factory update:

Life Member/Volunteers John (JB) and Karyn Bradford are heading off in May 2026 for their much deserved R & R. We all agree that JB and Karyn's commitment to BF operations since opening has been more than exemplary and will be a hard act to follow.

Dates for the diary:

- Biggest morning tea Wed 13th May @ Milang Institute.
- Child Safe Environments Training-Wed 13th May @ A space
- Volunteer week and Lakes Home Care luncheon -Friday 29th of May @ BF.

Treasurer Karen Burkinshaw tabled MADCA financial report March 2026 and YTD against budget.

Secretary Cathy Fish tabled outstanding "Actions and Motions" spread sheet for follow up.

Community Gardens update provided by Committee member Ros Francis.

Chairperson Wayne Footer questioned current naming rights/ownership of Registered Business name Milang Community Gardens to be further discussed at MADCA Committee meeting May 2026.

MADCA \$500 donation to the Milang Railway Association re joint participation in Milang Easter Fair approved.

Kind regards

Wayne Footer - MADCA Chairperson

I Am Woman



Details

15 MAY 2026

Join cabaret powerhouses Amelia Ryan and Libby O'Donovan for a rollicking tribute to the women who redefined Australian music in the swinging '60s. From the anthems of Helen Reddy and Olivia Newton-John to the soulful sounds of Judith Durham, Wendy Saddington, and more, this uplifting hour brims with iconic songs and hilarious true stories. Bold, brassy, and bursting with powerhouse vocals, I Am Woman shines a spotlight on the trailblazers who sang, stomped, and stormed their way into Aussie music history.

2:00 PM CENTENARY HALL GOOLWA

Tickets \$22 & transport from MOSHCC \$15
bookings via reception@moshcc.com.au

8537 0687



GOOLWA
CENTENARY HALL
14 CADELL STREET,
GOOLWA

MILANG
OLD SCHOOL HOUSE
COMMUNITY CENTRE

Letters to the Editor

Dog attacks at the Milang Oval

There has been 2 attacks over the last couple of months.

The one on 30.03.26 resulted in an ambulance trip to Flinders Hospital and a 4 day stay to try and save his finger.

The off-leash attacks were the result of these dogs charging up to dogs that are on leads.

The sign at the entrance to the oval states 'Dog on lead from 10.00am to 6.00pm' and both of these attacks happened during these times.

PLEASE keep your dogs on leads during these times.

Ron Turner

A 2nd letter received about the same issue:

Recently one of our senior citizens was exercising his dog (a little Sheltie) on a lead as he rode his Gopher. The dog was on one of those extendable leads. Suddenly, WHAM, a large crossbreed black and tan dog attacked them. He was panic stricken. In the attack the nylon lead became wrapped around his index finger.

Fortunately, he had a Pepper Spray which he sprayed the dog with and he ran off. When he looked at his finger it was severed to the bone, so he shakily drove home to his brother.

They rang for an ambulance which took him to Flinders Hospital. The micro surgeon re-attached the finger and after 4 days in hospital he was allowed go home – an expensive exercise.

The dog looked like a German Sheppherd x Rottweiler which has been seen roaming around the district – so be aware!

Jen



WHEN/ WHERE

Wednesday 24th June 11am - 1pm

ECHUNGA Memorial Institute

Adelaide Rd, Echunga

ARTISTS

Grace Bawden, Lynette Harris, David Visentin, Daniel Goodburn,
Jacki Hatcher

Your Italian favourites from Tosca, La Traviata, Madam Butterfly,
La Boheme and more, Romanza, Tragedia, Drama e Vita

TICKETS

\$28 Adults \$25 Concession
Transport \$15

BOOKINGS (tickets sell fast)

contact MOSHCC RECEPTION

8537 0687

Departing MOSHCC @9:30am

MILANG
OLD SCHOOL HOUSE
COMMUNITY CENTRE



Milang & District Historical Society Inc
P.O. Box 297, Milang, S.A. 5256

(Including the Port Milang Museum, Lakeside Men's Shed & the South Australian Fire Fighting Vehicles & Equipment Museum)

Milang & District Historical Society Port Milang Museum Open Day

Sunday 3rd May, 2026 10.00 am to 4.00 p.m.
at the Milang Oval grounds.

Admission \$2.00.

Come and have a look at your local history.



Hello Milang & Districts Community

You are invited to our Australia's Biggest Morning Tea. Let's get together and enjoy a cuppa so we can support those impacted by cancer.

Host Milang Old School House Community Centre

Where Milang Institute

Date 13th of May

Time 10 am - 11:30 am

Details Join us for a morning tea in support of the Cancer Council, to connect and unwind

RSVP by May 6th

Phone/Email 8537 0687 reception@moshcc.com.au



June 5th

FROM 12PM

LAKESIDE BUTTER FACTORY
22-23 DARANDA TERRACE, MILANG

CONTACT RECEPTION
TO BOOK 8537 0687





FUN | MUSIC | MOVEMENT

● COME & JOIN IN!

\$5
Session

Line Dancing

@ Milang Institute Hall
23 Coxe St, Milang

Every Tuesday
1pm-2:30pm

wear comfy clothes & bring your
water bottle



Register with reception: **8537 0687**



Tai Chi

helps open, support & protect the joints in the body.
It improves balance, flexibility & 'whole body' relaxation,
amongst other things.

Tai Chi is a continuous process, not a quick fix!
In Tai Chi, simple movements, body scan meditation &
Mindful walking allows opportunities for tension to release
so the body can relax.

Tai Chi eventually taps into internal energy
- mind, body and soul all connected.
It is an internal martial art, so the principles of centring,
grounding & harmony in movements apply

Nothing evolves without change - relax into this gentle art.
A continuous process.

As awareness grows, tension releases.
Take a moment now to breathe & relax down through your body.

Come and try - first session complementary.

Contact Jen for more information 0412595102



Milang Institute
Wednesdays 1 pm - 2 pm

MILANG
OLD SCHOOL HOUSE
COMMUNITY CENTRE

Stepping On' Keep Active ... Stay Strong



Strength for Life

Tuesdays from 10—11am at
The ACE SPACE at MOSHCC

A weekly one-hour exercise class using gentle and controlled movements to improve strength, balance, flexibility and coordination in a fun and supportive environment. Small group, suitable for all abilities, (priority given to CHSP clients), EMAA (Easy Moves for Active Ageing) Trained Instructor.

Good balance is needed to keep us moving about confidently and safely.

Phone: 8537 0687 Cost: Gold Coin Donation



Over 50's Keep Fit Class

Milang Institute Hall

Thursday 10am-11am

All Welcome

For info call MOSHCC 8537 0687

We won't let our body succumb to old age.

Therefore, we try to prevent that by strength and stretch movements (and laughs and giggles)

Every Thursday between 10 and 11 o'clock.

So do your body a favour and join us.

A cool breeze

Karen Robinson

How sensual is a cool breeze...the coolness of a sun kiss, touch, lingering care by a loved-one...the sensation on your skin as a whisp of wind cools and touches tiny crystals of beaded sweat... the whispering movement of relaxing air dances on freshly washed hair like sand dancing around uncovered ankles, prickling and tingling...the feeling of calm, purity, tranquillity, light and gentle, fresh water carrying the heat like a cloud disappearing into the horizon...the stagnant layer of warmth now, going, gone...

The smell of freshness, vibrancy, awakening...a beautiful fragrance candle willowing in the air making the light dance...opening the window allows the escaping dust and heat to enable the ghost of cool air to hover, escaping into all corners, an oven cooling down...a cool breeze changes your mood and improves the soul...stagnant layer of warmth, feels heavy, a weight...

A breeze, a welcome reprieve, creating comfort and serenity...a long calming breath, zephyr, a small mist cloud as the body relaxes...rustling leaves blow, a scented aroma...invigorating, crisp and beautifully perfumed.



Blue-green Orb

for Artemis 2, April 2026

liftoff
bumpy ride
rumbles and rattles
curving over the horizon
black velvet porthole view
blue-green orb below, chandelier
of stars above our heated planet's moon
orbiting, how long before we begin descent
together we dream of flaming re-entry
glowing as we surf the stratosphere
ready for parachute splashdown
turquoise sea swell
earth's rhythm|
our home

by Geoff Graetz



Winter Nights

Martha Landman

Lanterns. Let us dance.
Let's move the tables round,
clap our hands in the air.
Pour the wine. Light the fires.
Let's come alive, simmer our soup
on these dark nights,
freezing cold and early with rain.
Fuel the heat.
Let our hearts bond
over fine knitting and stitching,
read mountains of books
on these shivering nights.
Let the bed be our friend,
with word puzzles, Sudoku.
Let's hibernate and not say
how we envy our friends
sunning on warm beaches
on the tropical Queensland coast.

*Poets are encouraged to submit their poems for Poets Corner.
Poets must include their contact details for the editor.
Send poems to: PO Box 251 Milang 5256 or jude_poet@yahoo.com.au*

ANZAC Day Service

Saturday 25th April 2025 @ 10.30am

What a beautiful morning it was for the ANZAC Day service this year. The weather was very kind to us, lovely and warm and the event was extremely well attended. It was great to see so many people not only from Milang but also Strathalbyn, Clayton Bay and surrounding areas.

The event was led by MADCA Chairperson, Wayne Footer and the Strathalbyn and District Concert Band played beautifully for us.

Wreaths were laid in memory of the many wars and conflicts of the past as well as a beautiful purple wreath with handmade flowers in memory of all of the animals who were sacrificed during the wars.

The service was followed a delicious morning tea at the Institute Hall and as usual, these events would not be possible without the assistance of the many volunteers who helped set up, cook and clean up on the day, thank you very much.







Meet your local physiotherapist in Milang

Hello Milang,
My name is Lien, and I am so pleased to introduce myself and my physiotherapy clinic in Milang.

A little bit more about me

I completed my Master's degree in Belgium 10 years ago and worked in private practice with adults. I went traveling and met my lovely partner in Argentina. We decided to move to Adelaide where I specialised in physiotherapy for children and babies.

Physiotherapy with purpose

I love working with all ages from aches and pains to more complex chronic conditions. What drives me is the puzzle – understanding not just where someone has pain, but why it is happening and looking at the whole picture. The goal of treatment is working to what you would like to get back to and what you love doing. Depending on your needs, we can use hands-on treatment, exercises, dry needling, education and self-management strategies.



Why people come to see me

- ✓ Back, neck or shoulder pain
- ✓ Joint pain (knees, hips, ankles, wrists)
- ✓ Recovery after surgery
- ✓ Work-related injuries
- ✓ Headaches and jaw pain
- ✓ Nerve pain
- ✓ Dizziness, vertigo and vestibular conditions
- ✓ Neurological conditions (MS, Parkinsons...)
- ✓ Chronic pain conditions
- ✓ Arthritis
- ✓ Difficulty walking, balance and falls
- ✓ Delayed motor milestones (rolling, sitting)
- ✓ Autism, Down Syndrome, CP, Genetic and Neurological conditions

It is always worth checking in if you are not sure if physiotherapy can help. Not every problem requires ongoing appointments. Sometimes one session to properly understand what is happening is exactly what is needed.

I have a Hicaps machine at the clinic and accept Private health, Medicare referrals, WorkCover, NDIS, Support at Home Packages and DVA.

COMING SOON: Free Information Session on Hip & Knee Osteoarthritis with the commencement of your local GLAD Program.

Please let me know if you are interested – everyone is welcome

Come and say hello!

The clinic is open at Shop 4, 10-17 Daranda Terrace, next to the Chemist. I work Tuesdays, Wednesdays and Thursdays. Need another day? Just give me a call and I will do my best to accommodate you.

Call

0416 318 423

Book Online

www.togrowphysio.com.au

Visit the website






For Adults, Children & Babies

Manual Therapy
Exercise Therapy
Dry Needling
Vestibular (Dizziness, Balance) Treatment
Motor Developmental Delay

0416 318 423

Book online



Shop 4, 10-17 Daranda Terrace, Milang
www.togrowphysio.com.au

Raffia Basket Weaving Workshop

Saturday 2nd May
9 am - 1 pm

@Ace Space, Milang Old School House Community Centre
24-25 Daranda Tce, Milang

Learn to make a gorgeous random-weave basket with Danielle from Creative Raffia
Perfect for a thoughtful Mother's Day gift

All materials supplied, including morning tea
Cost \$39

Bookings via MOSHCC reception 8537 0687





Looking for support that works
for rural and regional families?
So are we.



Take part in a new study aiming to improve mental health and wellbeing support for parents in regional and rural areas

If you have kids aged 0-12 years, and live in a regional or rural area, we'd love for you to be involved. Scan the QR code or follow the link to find out more.



<https://seed.deakin.edu.au/our-research/project/family-foundations-trial>

Ethics Approval: RCH HREC Reference Number - 117878

Playgroup at EFS Milang Campus May 2026



5/5/26	Where do we live? Car mat and roadmap Block building .. make our homes.
12/5/26	Healthy eating ..Community Garden visit
19/5/26	Healthy eating ..Cooking with Garden Produce.
26/5/25	Ernie Dances to the Didgeridoo Community Life in other parts of Australia Music with rhythm sticks and percussion

MILANG CAMPUS

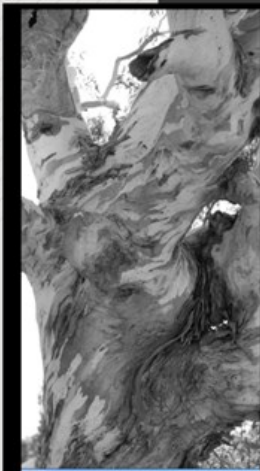
Eastern Fleurieu School

Harmony Week

The students at Milang Campus enjoyed Harmony Week with a few different activities.

Our Year 6's made tacos for all the students and orange jelly cups. On the Friday they helped serve at a special Harmony Day luncheon. The students and staff all wore orange on the Friday.





PHOTOGRAPHY IN NATURE

**1 on 1 Session with Pam
located in Milang
flexible times & days**

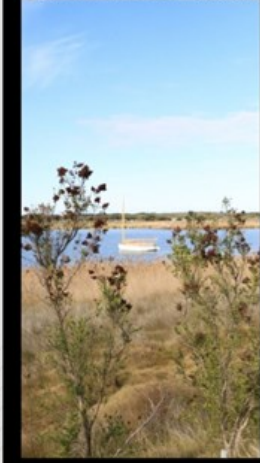
Learn new skills - camera settings, editing basics, still life & product photography & much more

Take photos of nature
Examples: Sunrise, during the day, or sunsets



Contact MOSHCC reception
for bookings

8537 0687 **MILANG**
OLD SCHOOL HOUSE
COMMUNITY CENTRE



Supported by



re:link
australia



Embracing Neurodiversity

Create a space where every brain belongs

Join our two **FREE** workshops designed to equip you with the tools and insights to build a more inclusive community

Friendly, practical sessions for people involved in community services, sporting clubs and volunteering. Learn the basics of neurodiversity and how to enhance inclusion and participation for neurodiverse children and young people.

BOOK



**Thursday 30 April, 2-4:30pm
Strathalbyn Library and Council Office
1 Colman Terrace, Strathalbyn**

BOOK



**Monday 11 May, 6-7:30pm
Port Elliot Oval Clubrooms
North Terrace, Port Elliot**

LIMITED PLACES - BOOK NOW

For more information:
training@connectedself.com.au



CARD AFTERNOONS

This is an open invitation to anyone who may be interested in coming to our card afternoons every Tuesday at the Community Centre.

Time is from 1pm to 4 pm with a cuppa and cake included at a cost of \$2.50. The games played are Crib, Canasta and Jonola, but could include Euchre and Rummy.

Those wishing to learn will be given free tuition. Come along for a fun couple of hours.

For more information,
phone MOSHCC on 85370687



Playgroup

Milang & Langhorne Creek R-6 Campuses

Our playgroups cater to families with children from birth to 5 years.
Attendance is **FREE**

Playgroup is a fun and welcoming space where children can learn, play, and make friends - all while building confidence and important social skills.

With varying programs each term, we endeavour to provide activities that challenge, stimulate and entertain!

Milang playgroup is run every **TUESDAY** morning during school term at the Milang R-6 campus. 9am - 11:30am
Head of Campus - Merran Jolley
ph. 85362455

Langhorne Creek playgroup is run every **FRIDAY** morning during school term at the Langhorne Creek R-6 campus. 9am - 11:30am
Head of Campus - Les Cameron
ph. 85362455



Milang Easter Market 2026



Wow, what a fabulous Milang Easter Market we had this year.

The weather was absolutely perfect, thankfully a lot better than last year when we all got 'blown away'...

We had 69 stalls offering a wide ranges of goods for sale including delicious food and coffee, bric-a-brac, gorgeous arts and crafts, pet treats, tools, clothing, furniture, makeup, candles, fresh vegies, wines and much much more.

The market was very well attended and we were very happy that the Easter Bunny was able to visit and give out chocolates.

Events like this do not happen without the amazing hard work of the many volunteers involved and a huge thank you to everyone from both the Milang Railway and MOSHCC who volunteered and worked together on the day to make this event one to remember.



FEAST @ HOME

Delicious fresh cooked meals by our chef

EVERY THURSDAY

Ready to eat meals!
preorder your choice of meals
for collection or delivery

Call reception for more information 8537 0687
 (Free local delivery to your door)

MILANG
OLD SCHOOL HOUSE
COMMUNITY CENTRE

LAKES
HOME CARE
your community
your choice

MILANG & DISTRICT COMMUNITY ASSOCIATION INC.

Volunteers Needed

We need your help!
if you have a few spare hours & enjoy assisting the community, we would love to hear from you!

MOSHCC Receptionist ½ day
Drivers
Gardeners
Kitchen Hand - Wed, Thur, Fri
Youth Group
Providore Sales - Butter Factory
Kitchen Hand - Fri pm, Sat, Sun

More information ☎ 8537 0687 🌐 reception@moshcc.com.au

MILANG
OLD SCHOOL HOUSE
COMMUNITY CENTRE

MILANG
LAKESIDE BUTTER FACTORY

LAKES
HOME CARE
your community
your choice

GARDEN TO PLATE

*RAISED GARDEN BEDS
& WICKING BEDS*

Join the 'Garden to Plate' gardening team to learn about raised garden beds & wicking beds

Assist with the ongoing maintenance & further planning

Thursday's
2PM-3PM
LAKESIDE BUTTER
FACTORY

**CONTACT MOSHCC
RECEPTION FOR MORE
INFORMATION
8537 0687**

MILANG
OLD SCHOOL HOUSE
COMMUNITY CENTRE

MILANG
LAKESIDE BUTTER FACTORY

Community Centres SA
Strengthening Local Communities

FRIDAY FEAST

**Join us on Friday's @12:30 for
lunch & great company!**

\$12 for a two course meal
Vegetarian options
located in the ACE Space

Milang Old School House Community Centre
23-24 Daranda Tce, Milang

Call reception to make your booking 8537 0687

EVERY FRIDAY!
(except public holidays) {Transport available}

MILANG
OLD SCHOOL HOUSE
COMMUNITY CENTRE

(Transport available)

Rainfall for April 2026



Wed 01/04/2026	0.20 mm
Thu 02/04/2026	0.20 mm
Mon 06/04/2026	2.80 mm
Thu 09/04/2026	5.20 mm
Fri 10/04/2026	7.20 mm
Sat 11/04/2026	0.60 mm
Sun 12/04/2026	0.40 mm
Wed 15/04/2026	0.80 mm
Fri 17/04/2026	0.40 mm
Sat 18/04/2026	0.20 mm
Mon 20/04/2026	0.60 mm
Sun 26/04/2026	2.60 mm
April 2026 Total	21.2 mm

Information sourced from the Elders Weather website

5 Ways in 5 Days to Wellbeing – Be Aware



Day 3 of the Wellbeing Workshop Suite was offered to the 11-14-year-olds, bringing a vibrant energy to the Milang Lakeside Butter Factory filled with excitement and curiosity.

The session opened with Tom Petty's 'Free Fallin' led by our singer-songwriter, Loren Kate, who helped build confidence and encouraged the young people to use their voices. After a slightly hesitant start, the room soon filled with a shared harmony that reflected teamwork and great spirit, and smiles began to appear. In the next part of the workshop, a few nerves were mentioned; however, they soon faded with the beat of the drums. This relaxed setting by Smile n Drum, provided opportunities to learn structured rhythms and also encouraged free play, creating a safe, creative space for the group to let loose and play together using a mix of dunun, djembe and small percussion instruments. Smiles grew, and the young people were especially excited when hot chocolates and afternoon tea were on offer.

The latter part of the session moved into a creative, art therapy-based activity led by holistic counsellor Rossy Reeves. Rossy posed gentle, targeted questions and invited the young people to respond using a mix of pastels and ink, helping them reflect on and express their feelings. Time was then set aside to debrief, with a range of emotions shared across the room. Overall, the workshop encouraged participants to notice their surroundings and appreciate the moment, and it was a delight to see them supporting one another and working together.

A representative from Headspace was unable to attend on the day but provided information about the support options available throughout the Victor Harbor and Mt Barker locations. Information packs are also available in the MOSHCC Lounge – 8537 0687 for more information. We look forward to showcasing the next workshop, soon to be announced. Watch this space...

TRIVIA



Answers Page 44

By Jude Aquilina

1. What is said to be 'the spice of life'?
2. Which AFL team is nicknamed The Bombers?
3. What is the UK equivalent of the CIA and ASIO?
4. Where on the face would you find the philtrum?
5. What type of building is a campanile?
6. In which Queensland town is the Australian Stockman's Hall of Fame?
7. Why does the red fox have such a furry 'brush' tail?
8. A mahout rides what kind of animal?
9. What does 'supersonic' mean?
10. Who is the Premier of New South Wales?

Women's Circle

Fridays 10-11am

ACE Space @ MOSHCC

24-25 Daranda Tce. Milang

*A non-judgmental space for women
to be together, connect, share &
chat over a cuppa.*

Facilitated by Kathryn from AKOM Counselling

(not sure what to expect, have a chat with Kathryn 0447 144 119)

Free, bookings not necessary



MILANG
OLD SCHOOL HOUSE
COMMUNITY CENTRE



MOSHCC MOVIE

★ NEW DAY! ★

Join us on the **4th Friday** of each month
from 2:00 pm at the
Milang Old School House Community Centre
ACE Space
for a relaxed afternoon of movie watching
together

To find out what movie is coming up next,
and bookings, please call
MOSHCC reception 8537 0687

☕ Afternoon tea: \$2.50

We'd love to see you there!



We are the FIBRE ART GROUP

We meet at the Milang Institute on
Tuesdays
at 10.30 am. to 3.00 pm.



Bring your own creative fibre work :-
Knitting, Crochet, Spinning,
Weaving, Sewing. etc. etc.



We charge a \$3 attendance fee which
covers Tea or Coffee and Hall fee.
Bring your own lunch!



Occasional Tutorials
during the year.



Phone Heather :-0424395503.

Yoga

self help sessions in Milang

5:15PM-6PM EVERY TUESDAY
GOLD COIN DONATION



BASIC YOGA SESSION FOLLOWING A VISUAL PROGRAM
TO IMPROVE AND MAINTAIN STRENGTH, BALANCE AND
FLEXIBILITY IN A FUN ENVIRONMENT!

BRING YOUR WATER BOTTLE & YOGA MAT
LOCATED IN ACE SPACE MOSHCC
24-25 DARANDA TERRACE, MILANG

Contact reception for bookings
8537 0687

MILANG
OLD SCHOOL HOUSE
COMMUNITY CENTRE

MILANG OLD SCHOOL HOUSE COMMUNITY CENTRE'S
"FIBRE ART GROUP" PRESENTS IT'S
ANNUAL

**EARTH
WIND &
FIBRE
FAIR**



JUNE 6th & 7th (Sat & Sun) 10am to 3pm

Milang Institute

cnr Coxe Street and Ameroo Ave Milang SA



weaving .. rag rug making .. knitters .. crafts .. spinning ..
homespun wool .. felting / needle felting .. basket weaving ..
fleece and equipment sales ..
Demonstrations by local Artisans

Light lunch and refreshments available (GF and veg options available)

Contact :- Danielle 0415692855 or Robyn 0431072195



It is with a sad heart that we wish to share, that the beautiful Peg Rothe (one of our home knitters) who recently turned 93, has passed away.

Peg, seen here with some of the Yarners front row (next to Pauline on her right who recently turned 95 years old.)

We will miss her and her beautifully knitted squares, which we are told, (by Kate her granddaughter) there are still more to come. She loved doing them and donating them to 'Just Yarners'.

Thank you Peg. RIP

MILANG YOUTH HUB

VOLUNTEERS NEEDED

We Need Help With

- Art & Craft
- Cooking Classes
- Kayaking
- Fishing
- Woodwork

You may have heard we have a new YOUTH HUB in Milang!! We need volunteers for a variety of beautiful programs with passionate and committed people involved to provide the best for the young people in our community. In return we will help build a community around you!

Food, Fun and Laughs Provided.

Come join us!

REGISTER NOW

Volunteer Coordinator
vickie@moshcc.com.au
8537 0687

MILANG
OLD SCHOOL HOUSE
COMMUNITY CENTRE



Calling all Knitters/Crocheters, ex & wannabe Knitters /Crocheters!!

Or

Anyone who would like to be part of the 'Just Yarning Group' group, please call Lyn on 0407 370 079.

We meet at 10.30 on Thursday mornings at the
Milang Mini Mart Café and Providore

to knit squares to be sewn together to make rugs that will be distributed locally to those in need.

Donations of 8ply wool would be greatly appreciated and can be left at (MOSHCC) Milang Community Centre. If you are interested or have any queries,

Please contact Lyn - 0407 370 079

JUST YARNING



Ros, dusted off the Purple Poppies Wreath (the Yarners made a couple of years ago) ready for Anzac Day, remembering the animals that were sacrificed during the 2 world wars.



Another expertly crocheted blanket made by Cyndy ready to keep somebody warm and snugly...



Also, scarves, gloves and beanies ready for delivery this month.



Another bag of colourful blankets sent up to Camp Andrew Russell at Alawoona during April.



Meals on Wheels

We deliver smilesSM

Please call 1800 854 453

for information on how to order

Justices of the Peace

Please ring for an appointment

Leon O'Driscoll 8537 0051

Karyn Bradford 0412 036 900

Gloria Jones 0427 370 047

Alcoholics Anonymous is a fellowship of men and women who share their experience, strength and hope with each other that they may solve their common problem and help others to recover from alcoholism.

Meetings every Sunday at 5pm

Reg Sissons Day Care Centre, High St Strathalbyn

Contact 24 hours (08) 8221 6999

Mental Health Support

- Lifeline: 13 11 14
- Beyondblue: 1300 22 4636
- Suicide call back: 1300 659 467
- Living beyond Suicide: 1300 761 193
- Men's Health Line: 1300 789 978
- Parent Helpline: 1300 364 100
- Kids Helpline: 1800 55 1800
- Rural & Remote Mental Health 1300 515 951

the
power of
humanity



Red Cross News

May 2026

Thanks to everyone for your support for the Red Cross.

The Cheer Up Hut will be open on the 1st Wednesday & 1st Saturday of each month from 9am until Midday, depending on volunteer availability.

Many thanks to those that helped and supported us on Easter Saturday. We had a very successful day.

If anyone needs clothing at any time, please Contact or Tracy on 0417299391. Discretion is assured.

The small trading stall by the oval entrance has a selection of Books, DVD's, Plants & Toys etc. A donation Box is available at the stall.

We would love to have more volunteers they are urgently needed. If interested, please Contact Tracy on the above No.

Our meetings are now Bi-Monthly on the first Wednesday of the month. The next meeting will be on the 6th May at 12.30 at Bec's Kitchen.

Please do not leave donations at the Shop or Hut unless we are there.

Please follow our Facebook page for any updates.

Doris & Chris Lambert

Publicity Officers

HISTORIC GRAVES OF THE MILANG CEMETERY

THE WILLIAMS FAMILIES

by Alwyn Hopgood

In 1856, Thomas Williams's name was on a partition to end Bremer Council and to form Alexandrina Council, which was a success – after counter partitions by Bremer Council were unsuccessful.

Jim Williams married Joan Pavy and had a garage in Milang. Firstly, he worked at Ferguson Garage, then he built his own on Stephenson Street, two blocks away from Ferguson Garage which eventually closed. As well as being a competent mechanic, Jim collected cigarette lighters – he had 2,659 in all! Jim originally came from Alawoona near Loxton.

Ridley Williams and his wife Beatrice came from the Yorke Peninsula to be dairy farmers at the 'Lake Alexandrin Shore', about three and half miles east of Milang. Their daughter Dorrie, was a huge help on their farm. At the farm there were a few cats with only one ear; apparently this arose when a cat was bitten by a snake...to save the cat, one of its ears was cut off to release the spread of the poison. It must have been a success by the number of one-eared cats.

Dorrie Williams was a fine lawn bowler and played many games for the Milang Bowling Club. In 1979, Jim Williams was a foundation member – one of 18 – in the group that formed the steering committee of the Milang and District Historical Society. He was pursuing the idea of writing a book covering the history of Milang and surrounds.

Both of the Williams families, Jim and Ridley's, were honest and hard-working, and gave much service and support to Milang and the district.

Roy Williams was a share cereal farmer in the Milang area for a long time, and owned land on Echo Park Road, Milang, as well as other properties.

Jeanee Williams had a secondhand business in Strathalbyn for many years, and only relinquished it upon her death at 94 years old. She was lovingly cared for by her daughter Janet for a very long time.

On a lighter side, once a doctor made a house-call, at Ridley and his wife Beatrice's home on the farm, in his Austin A40. He left the keys in the car and the driver's side door open and their pet goat removed the keys – never to be found.



Community steps into science at Blue Carbon Training Day



A group of local community members rolled up their sleeves alongside scientists on Hindmarsh Island for a hands-on training day exploring how wetlands store carbon. Blue (marine) and teal (freshwater) carbon wetlands can help reduce climate change impacts by locking up greenhouse gas in plants and soil.

Led by researchers from the CLLMM Research Centre's Blue and Teal Carbon project, the session gave participants the chance to learn how to measure carbon in the region's unique environments.

Project lead Professor Sabine Dittmann (Flinders University) said strong community interest in the project, particularly from local Landcare groups involved in revegetation, inspired the team to create the free session.

'From the early days of this project, we saw a lot of community interest... We were grateful for the opportunity to use their knowledge of revegetation history in our project...the training was our way to give back and say thank you,' she said.

From measuring trees to getting their hands dirty analysing soil, the day provided a rare, real-world glimpse into field science in action.

"It was so nice to hear all the great questions and see the strong interest – everyone wanted to get right into it and measure trees," Prof Dittmann said.

Working in small groups, participants learned how to measure vegetation height, shrub density and tree diameter in swamp paperbark and saltmarsh environments. They also explored plant identification and were introduced to more advanced measuring techniques, including greenhouse gas flux measurements, offering insight into how researchers track carbon capture over time.

Blue and teal carbon ecosystems, including saltmarsh, swamp paperbark forests and freshwater reedbeds, play a critical role in capturing and storing greenhouse gases as a nature-based climate solution.

"There was such motivation to take this project further into applied stages and future restoration planning," Prof Dittmann said.



“Protecting and restoring these environments will help to mitigate global warming. In addition, there are benefits for people, as these environments provide resources, are culturally significant, and could lower shoreline erosion,” she said.

Until recently, little was known about the scale of this potential in the Coorong, Lower Lakes and Murray Mouth (CLLMM) region.

Through extensive fieldwork, the research team has begun to fill that gap, estimating that there are more than 3.37 million tonnes of carbon stored across the region’s wetlands. Reedbeds in the lakes accounted for most of the total organic carbon stock, followed by swamp paperbarks and saltmarsh. The data they’ve collected can inform restoration and revegetation planning, improve land use decisions, and even contribute to emerging carbon markets.

By empowering and working alongside the people who live, care for, and know this landscape best, the CLLMM Research Centre is helping to build a shared understanding of how wetlands can support both climate action and community wellbeing.

About the CLLMM Research Centre

The CLLMM Research Centre, launched in January 2024, is part of the Goyder Institute for Water Research. It works with communities, First Nations, managing agencies and scientists to investigate the impacts of climate change on the CLLMM. It hosts the largest ever scientific collaboration in the region, with over 150 project team members, including scientists, community and managers, and more than 17 local organisations, and 26 state, national and international collaborators involved in the delivery of 29 scientific projects.

<https://cllmmresearchcentre.org/>

Additional information on the Blue and Teal Carbon Potential in the CLLMM research project

<https://cllmmresearchcentre.org/project/blue-and-teal-carbon-cllmmrc/>

<https://cllmmresearchcentre.org/news/blue-and-teal-carbon-wetlands/>



Milang Cottage Garden Club monthly outing report

Hi everyone hope you are all well. April 8th, five of us plus a visitor set off on a cloudy morning which promised rain, and we were going to the hills. First stop Tupelo at Mylor, lots of healthy looking plants a few of which found their way into the bus, still getting used to the restricted space with four walkers in the back.

Next stop Belair at Woods and Forest to look at some more native plants bought some everlasting daisy seeds going to try my luck. We had our lunch here rain still holding off.

Then on to Coromandel Valley to look at more natives and the rain arrived with us and boy did it rain so we did not stop long. Next thing to do is find somewhere for coffee and the drawing of the raffle box which was not very full because there was only a few of us and a big box, we ended up a Jack's in Strathalbyn, Marie won the box.

The next trip on the 13th May will be to The Murray Bridge area calling in at Woods and Forest, Bunnings, Serenity, and Notts Nurseries before returning via Tailem Baend where we will stop for Coffee. Please ring me o 85370453 if you are going or would like to go, you will need your bus fare of \$15, your lunch and a drink, plus an item for the raffle box.

Anne Feast



MILK AND CREAM SUPPLIERS TO MILANG BUTTER FACTORY

by Alwyn Hopgood

The Mould Family

Edmond Sergeant (Syd) Mould and his wife Christina were early settlers in Milang. They had two siblings, Oliver, and Netty.

Syd was the district ranger, and his property in Milang was surrounded by McDonald, Stirling, Marroo and Orana Streets, with the Congregational Church and manse the only structures not in their ownership on this town block. The Moulds also had three four-acre blocks on the north-west edge of the Milang township on Weeroona Drive and about 40 acres directly across the road from their three town blocks. This was eventually purchased by Syd Overall.

The Moulds had a dairy for a long time, hand milked and never had a milking machine. The Moulds did not own a motor vehicle, so their cream would have been taken to the Milang Butter Factory by horse and cart.

Oliver married but lost his wife very early on. His sister Netty remained single—Oliver and Netty shared a stone house on the corner of Stirling and Orana Streets in Milang. Syd, Christina, Oliver and Netty all helped with the milking of their dairy cows, and with separating the milk in a room near the rear of the house. They supplied the Milang Butter Factory with cream for most of its operating years.

Oliver met with an accident when the reins of a horse twisted around his thumb and peeled the flesh off and leaving the bone exposed. He never received any medical help and covered it permanently with a 12-gauge shot gun cartridge case held in position by a thin leather lace.

Oliver was an extremely helpful man who kept to himself. He was a prolific letter writer for the then *South Australian Weekly Chronicle*, first produced in 1858, and continuing to 1975. He wrote under the name of *Old Lakesider*.

Oliver worked at *Dalveen* for some years, a sheep stud at Woodchester. He rode back from *Dalveen* on horseback for the weekends. His sister Netty would have his future provisions ready, which included biscuits and his favourite yeast bun loaf.

When Oliver eventually retired back in Milang, he began a hobby of making cement farm posts—he said he was sick and tired of replacing wooden farm posts that were either burnt, rotted or eaten out by white ants.

Oliver was an excellent horseman and leather worker, repairing harnesses and making leather whips. On occasions, he had a duel with his whip-making neighbour, causing quite a din and being dangerous at times. His neighbour's whips may have been a bit more artistic, but Oliver had the upper hand as far as using the whip was concerned. He also made many useful gadgets, including a clever wire fence strainer.

Oliver was also a greatly respected drover with jobs from the Hills area to the Lakes property of the McFarlane's. Oliver's father worked for 20 years at McFarlane's *Wellington Lodge* property on Lake Alexandrina, and far and wide around the Lakes.

Oliver also spent years in the north of South Australia as a cattle drover and told many stories of hardship, both for himself and the cattle, especially in droughts and floods. He stated in one of his letters to *The Chronicle*, that it was foolish to let children ride a horse with their feet in the stirrup leathers—he recommended *Copes Patent* for safety, whether the learner was man, woman, girl or child.

When the Honorable John Lewis MLC directed Oliver to Burra—Mr L A Lewis, his son, was manager—his first job was to break in two polo horses for him. The next was two young racehorses. When Oliver left Burra, he moved further north. He helped truck cattle with *Scotch Mae* of Mrs Gunn's *We of the Never Never*, and from there to the fringe of the Great Simpson Desert, with no more than survey pegs for the railway north of Oodnadatta.

I can remember Netty Mould being a kind and generous person, small in stature but large in supporting town affairs. During WWII, she never once refused giving us lads goods for the School Patriotic Fund, or supply cooking for the *Paddy's Markets* held in the Landseer building for the war effort.

The whole Mould family was held in high regard and contributed in a quiet but honest way to the Milang township. They are all buried in the Strathalbyn Cemetery.



Oliver Mould



MILANG BUTTER FACTORY
1893 - 1951

Alwyn Hopgood

NOW AVAILABLE

As a Milang local I am thrilled to present Alwyn Hopgood's slices of social history in this brilliantly researched book—of our own town, the people who once lived here, of the lake and cream delivering paddle steamers, and of award winning butter made at Milang Butter Factory, I commend Alwyn Hopgood on his marvelous book.

Jude Aquilina, editor, publisher

\$30.00 each

Available from

MILANG OLD SCHOOL HOUSE
COMMUNITY CENTRE -

Monday to Friday 9—5 pm

MILANG LAKESIDE BUTTER FACTORY

Saturday & Sunday 10—4 pm

Another busy month at the Butter Factory and there have been some great live music events. Craig Atkins kicked off the month with his bluesy, country sounds complete with twin didgeridoos. His original music and interpretation of covers kept the crowd toe tapping and entertained all afternoon. On the 12th April Eddy's acoustic mix was appreciated by the music fans. Just last week we had a full house for "No Strings Attached" featuring Terry Ford's amazing voice and accompanied by Michael playing 6 and 12 string guitars. A group of regular patrons who attend the live music have been collecting small change and made a donation to the Butter Factory of \$240. Their ongoing support and attendance is greatly appreciated.

Asha Jones spied an old school desk left out free on Coxe Street and thought it would be a nice addition to Already Read Books at the Butter Factory. We all agreed and it was collected and positioned. A nice thing to have for the children to use and for adults to reminisce over.



The Butter Factory has inherited a large collection of maps related to the Milang area and the Murray Darling Basin. Most of these maps were obtained or donated over the Millennium drought and Lakes Hub period 2006 - 2016.

JB and Norm have been archiving and recording the maps in waterproof containers and they will be eventually stored in the cellar.

The next job is to catch up on the weeding and pruning.

On Mother's Day on May 10th we are expecting a large crowd as our local favourite duo Ella and Sienna will be entertaining us from 1-4pm. Please call the Butter Factory **0408512457** to make a booking as seats may be limited. If no one answers leave a message or voicemail and someone will get back to confirm your booking. The Kitchen will be open to serve you delicious pizza's and meals and Kanoetree Cellar Door will be open for wine, cider and beer.

Cheers for now

JB (John Bradford)



Norm and Phil fitting the Defib at the institute

On the work team front, following the installation of the Defib at the Butter Factory the team were asked to install another Defib at the Milang Institute. It has been installed on the front wall of the supper room.



Di letting it rip at the Open Mike



Buffy and Nico at open mike, their last time at the Butter Factory



No Strings Attached

Clayton Bay Dark Skies Event

Clayton Bay Community Association Inc (CBCA) Sponsored Event

Thursday 7th May 2026

CBCA Community Hall
6 Alexandrina Drive Clayton Bay

Warm up with complimentary soup & fresh bread, served from 6:30pm

Followed by a 30 min presentation at 7:30pm

- Darks Skies update
- Nebulas, the birth place of Stars.
- Telescopes Night (weather permitting).

Supported by



Bar open – drinks available

Clayton Bay Dark Skies is a sub-committee of the Clayton Bay Community Association Inc. and has received grant funding from the Alexandrina Council.



open

2nd & 4th Friday 5-8pm
pizza & wine

Saturday & Sunday 10-4pm
kitchen is open for light meals, coffee and cake

We hold regular live music events - check our Facebook and Instagram for details

WE ALSO HOST

Kanoetree Wines Cellar Door
Local providore
Local artists' work on display
Butter and cheesemaking museum
Already Read Books - second hand bookstore raising money for continued maintenance of the Butter Factory





**KANOETREE
WINES**

DARANDA TCE, MILANG - TO BOOK CALL: 0480 512 457



Sticky Beaks

April 2026



Back on the road again with a bus full (11) of Sticky Beaks, we headed off from the MOSHCC at 08.00am due to the distance we had to travel. We were heading to ALAWOONA to visit a hidden gem in the great outdoors called LLOYD GRIFFITHS CAR COLLECTION.

For every car enthusiast this place is a must. It will blow your mind and your socks off.

Stopping around 09.30am at KAROONDA for a cuppa and a stretch for 15 mins we headed off again as we still had a distance to travel.

We turned off the main Highway to Loxton at ALAWOONA and started travelling on a gravel road for approx. 18 kms until we got to some large sheds with farm equipment scattered everywhere but not a soul in sight. We drove around, when out of the dust a car appeared, and the driver informed us we still had a few extra kilometres to travel. Pointing us in the right direction and still on the gravel road, up and down over country terrain. Turning left then right, watching out for the sharp right hand corner, he warned us, and the driveway to Lloyd's car collection should be on the right. Finally arriving to this old homestead out in the 'never nevers' we saw a beautiful old shiny black Buick parked up by this big shed. Out comes this bloke with well worn short shorts, a tee-shirt and a big white beard. "YA Late" he said.

Gosh are we? Anyway, with all the niceties out of the way we met LLOYD GRIFFITH. We followed him in his big shiny black Buick until we got to these massive sheds. No power out there so out comes his generator and powers up the lighting for inside this MASSIVE shed. Walking into the first shed of 5 we were all blown away at the size of it and the amount of cars in it. Close to 150 cars all in rows, shiny, well preserved in great condition. WOW. All cars sit on this artificial grass turf. I can't estimate the size of the sheds but looking at some pictures attached you can get an idea. Racing cars, modified cars, rare cars you just don't see anywhere anymore.

Into another shed he started up another generator and in this shed was full of HOLDENS. Statesmans, Kingswoods Broughhams, Panel Vans, X Bathursts Torana's, 3 or 4 2 door Monaro's. You name a model, it is there. Chrysler's by the dozen.

After the 3rd shed of the 5 we were running out of time, so had to call it a day. Thanking Lloyd very much 🙏 we left knowing that one day we will be back to complete the rest of his 2 sheds and to see what he's going to put in the next two sheds he's about to build on the marked out foundations.

We made our way back across the gravel road to ALAWOONA to visit the VETS RETREAT specially built for Returned Service men and woman. A place where they can go and just chill out. Welcomed by an ex-Vet Mark he spoke briefly on the history of the place and the reason it's there. We were invited to make ourselves comfortable and wander around the place.



We fired up the BBQ and had a late lunch and then after a photo we had to start heading for home. (A special thanks to Greg Hopgood for organizing this.)



Finally making it to TAILEM BEND where we were all very pleased to receive an Icecream kindly donated by PHIL. Much appreciated Phil. Finally arriving home after travelling around 400 kms at 17.30pm to be welcomed back by VICKIE. A special thank you to you Vickie who with her special help in organizing this special event made it a very rewarding trip for us all being:

Buster, Mick, Mel, Wayne, Brenton, Rob, Darryl, Phil, Colin, Phil, and myself Gerry.



Sticky Beaks Men's Group

On the 3rd Tuesday of the month, the men's group set off on the bus to have a stickybeak at places and spaces around the area.

They usually find a shady spot for morning tea, spend time checking out places of interest (a different one each month), and have lunch at a pub, bakery, or restaurant.

If this sounds like something you would like to do and join in the adventures, contact **Milang Community Centre** for more information on **85370687**.



Please see page 33 for the upcoming Sticky Beaks adventures

CHILD SAFE ENVIRONMENTS TRAINING

Wednesday 6th May
@ 1:30 pm - 4:30 pm



**Location: Milang Lakeside Butter Factory
22-23 Daranda Tce, Milang SA 5256**

ABOUT CHILD SAFE ENVIRONMENTS: THROUGH THEIR EYES TRAINING

CSET: topics include:

- child protection in context, values and attitudes
- legislative obligations when working with children and young people (including screening obligations)
- risk and harm – abuse-related trauma
- sexual abuse and online grooming
- responding to disclosures
- child safe environments in organisations
- reporting a reasonable belief of risk and harm.

The training supports participants to understand types of risk of harm to children and young people, including:

- neglect
- psychological/emotional harm
- domestic violence
- sexual abuse, and
- physical harm.

If you are concerned about attending this program, please speak to the facilitator before attending the course to discuss your options.



MILANG
OLD SCHOOL HOUSE
COMMUNITY CENTRE

**Please contact MOSHCC to register
ph. 8537 0687**

**STICKY BEAKS
MEN'S GROUP**



*Wine
Tour*

**NATIONAL
WINE CENTRE**

Tram from Adelaide to Glenelg and return

Depart MOSHCC @9am
Wine Tour @11am
Botanic Garden stroll
Tram to Glenelg
Lunch - own arrangements

19th May

Tour \$26
Bus \$15

Tram free for SA senior card holders

MOSHCC reception
8537 0687

Limited bookings
contact by 12th May

MILANG
OLD SCHOOL HOUSE
COMMUNITY CENTRE

Sticky Beaks Men's Group

PS Marion
DAY CRUISE



TOUR \$75 | BUS \$15 | LUNCH ADDITIONAL

WEDNESDAY 03 JUNE, 2026

CRUISE FROM SWAN REACH TO BOWHILL

DEPARTING MOSHCC @8AM

LIMITED BOOKINGS CONTACT BY 21ST MAY

MOSHCC RECEPTION

8537 0687

MILANG
OLD SCHOOL HOUSE
COMMUNITY CENTRE

Dates to keep in mind for Sticky Beaks adventures
Projected activities for 2026

Month	Date	Event	Location	Price
May	19th	National Wine Centre Tram to Glenelg	Adelaide to Glenelg - Return	Tour \$25 bus \$15 Tram free for SA senior card holders
Jun	3rd	PS Marion Day Cruise	Swan Reach - Bowhill	Tour \$75 bus \$15
Jul	21st	Go Karting	Motorsports park Taillem Bend	Karting \$35 bus \$15
Aug	19th	Island Tour	Torrens Island Power Station & Garden Island Port Adelaide	Details to be confirmed

LAKES HOME CARE

Lakes Home Care can help you with your daily activities to make life easier and give you more time for you. Call us today on 85370687

- Gardening
- Housework
- Shopping
- Transport
- Medical Appointments
- Equipment



Church Services—Milang and surrounding areas

Church Of Christ, corner of Watson & Coxe Streets , Milang

Enquiries—Peter Wilson 0407 607 638

Sunday Service 9:30am

Friendship & Craft at the Church Hall—Wednesday 10:00am—12:00 Noon

Uniting Church, corner McDonald & Orana Streets, Milang

Enquiries—Nola Deer 8536 4429

Sunday Service 10.00am

Anglican Church—St Marys, corner Luard & Maroo Streets , Milang

Enquiries—Rev. Alex Stone 0405 084 794

Sunday Service—8.15am (1st and 3rd Sundays of the month)

Lutheran Church

Cnr Commercial Road & North Parade, Strathalbyn

Pastor Matthew Edgecomb 8536 3322

Catholic Church—Good Shepherd, East Terrace, Strathalbyn

Father Richard Morris 8391 1053



Milang Community Garden

May 2026

April brings us into an in-between growing season with the summer crops finished and new Autumn crops needing to be planted for harvest in the Winter. It has been a time of cleaning up the old. May brings in new life and produce!

The orchard has finished producing buckets of fruit with Quinces bringing in the finale! The trees, are now much happier, having been given a super haircut with the assistance from the professional pruner. We look forward to easier management and harvest next season.

The berries and vine at the back of the garden are gradually being cut out and controlled after massive overgrowth during the past few years.

Our gardeners are looking at improving the old infrastructure of the beds, some of which have seen better days. Thanks to a new grant, some good planning and innovation on the part of our talented gardeners, we will soon see some new wicking beds and new soil in the older beds. Thanks, also to our co-ordinator, Vickie Schmidt who has been working with our gardeners, helping to make things happen, in a timely manner!

We are very pleased to have two new members join our merry band, and hope that more locals will find the time to do likewise. *Many hands make light work... but we could do with a few more!* The morning teas alone are worth the effort, not to mention the social interaction and health benefits of being outside amongst fresh green plants, learning new skills and getting to eat homegrown fruits and veggies!!

Please keep an eye on the cart for extra in-season produce or drop into the garden for a bag full of something for a small donation.



Big Pumpkin Milang Community Garden



Weekends at Milang Station 12 to 4



Museum, Craft Shop
& Free Train Rides

Plus the Cafeteria Car
On Sundays only

Devonshire Tea \$6
Gourmet Burger \$12
Steak Sandwich \$12
Cappuccino \$4
Iced Coffee \$5
Cheese Dog \$5.50
and lots more ...



Volunteers needed for maintenance, train driving, guides, cafeteria staff, etc.

www.milangrailway.org.au or 0414 232 060

Lakeside Men's Shed at the oval

BBQ every Thursday (donation)

From 12:00 noon

Come and experience our relaxed atmosphere and share yarns with other like-minded people.

Take the opportunity to check out the Men's Shed facilities and current projects.

The Lakeside Men's Shed is working to assist in men's metal health issues and is supported by SA Health and the local community.



Milang Environmental Centre Serving our community

The Milang Environmental Centre is a community run organisation and an asset to the residents of Milang.

Ph: Geoff 0428 845 171 or Chris 0411 474 529



Services:

- Recycling depot for glass, plastics, metal and garden organics.
- Bottles and cans deposit paid.
- Recycled items for sale.
- Electronics, household and garden wastes incur a fee.
- Nutrient-rich Garden Mulch for sale

Hours: Wednesday and Saturday 10am - 3pm

Corner of Weeroona Drive and Jupiter Street MILANG

All Aboard

Until 1968, Milang residents were familiar with the passage of the “Barwell Bull”. That was the railcar which operated between Milang and Strathalbyn. It was manufactured at the Islington Works to a design by the Philadelphia Brill company and was nicknamed that way with Barwell, being the premier when they were introduced in the 1920s and bull because horn sounded like a bullhorn.



Passengers arriving on the Victor Harbor train from Adelaide would get off at Strathalbyn and cross the platform to the railcar waiting to take them to Milang. That railcar would then proceed, at a gentle pace, pulling vans containing supplies for Milang and the lakes.

On arrival, the driver, Arthur Creeper, would go fishing for a couple of hours before reversing the railcar onto the turntable for the return to Strathalbyn with the vans loaded with fish, cereals, dairy products and other produce for the Adelaide market.



There was no refrigeration so, if it was a hot day and the train was delayed, then the produce was ruined and the local producers were very unhappy.

“PLASTIC CONUNDRUM”

MILANG ENVIRONMENT CENTRE corner of Weeroona Drive & Jupiter Street Milang

P O Box 338 Milang SA 5256 Ph: 85370201 E: milangenvironmentalcentre@gmail.com

OPEN: 10 AM – 3 PM WEDNESDAY & SATURDAY

The small group of volunteers who operate the **Milang Environment Centre (MEC)** have to deal with many challenges in providing service to assist the community in recycling deposit drink containers. One of the worst challenges is counting and handling smelly, dirty containers which the MEC can and does sometimes decline to accept. One MEC volunteer told MCN his dog often does not want to know him when he comes home after handling dirty drink containers, especially ice coffee cartons and plastic bottles.

Another formidable challenge for MEC volunteers is trying to distinguish between different types of plastic containers, many of which look similar but **MUST** be sorted and stored separately. MEC volunteers have been known to develop terrible headaches after trying to distinguish between different types of plastic drink containers. Sometimes the only way to distinguish one type of plastic drink container from another is by the almost unreadably small manufacturing identification code (a tiny number within a small triangle), imprinted on the bottom of the container. This far-too-small-hard-to-read symbol is an **identification code** for different resins used in manufacturing the plastic containers. At the conclusion of a recent training review session on how to distinguish between different types of plastic drink containers, one of the MEC volunteers was seen, head-in-hands and heard to mutter; *“My head hurts Mr Gumby!”*



These different deposit refund plastic drink containers identify as HDPE must be sorted and stored together.

Distinguishing = Headache.





A mixed variety of HDPE deposit refund plastic drink containers sorted and stored in a bale of 500.



A mixed variety of HDPE NON-deposit refund plastic drink containers sorted and stored in a bale.

The confused, headache-suffering MEC volunteers need to distinguish between at least four different types of plastic drink containers: **1. PET** or polyethylene terephthalate, **2. HDPE** or high-density polyethylene, **3. PVC** or polyvinyl chloride, and **4. LDPE** or low-density polyethylene.

The almost illegible number in a tiny triangle identification symbol on the base of the different drink containers ascertains what type of resin was used to make the specific type of plastic and determines recyclability. Not all types can be recycled, and different types cannot be processed for recycling together. A MEC volunteer told MCN that PET plastic drink containers are the most difficult to identify as they come in many different shapes, sizes and colours.

"It is a headache inducing nightmare!" the volunteer explained before taking two Rapid-action Panadol. **The SA Govt will introduce deposit refunds on ALL drink containers except plain milk in 2027. The volume of recyclable items the MEC anticipates processing may increase as much as 50% making the identification, sorting and storing process of different plastic drink containers even more headache-producing.**



Mixed variety of PET deposit refund plastic drink containers

MILANG BOWLING CLUB NEWS: MAY 2026

“MILANG LADIES WIN GF”

The Great Southern Bowling Association Fleurieu Regional Open Pennants Competition 2025-2026 season was successful for the **Milang Bowling Club**. Three Milang teams; Open Division 3, Open Division 5 and Womens' Division 2 **all played in Grand Finals**. This is a special achievement by a small club competing against much bigger clubs with large numbers of playing members from which to select teams. Milang Bowling Club President **Brian Patterson** told MCN: *“Milang currently has only just enough player members to fill three teams. If any one player is unavailable due to illness, injury or whatever, we go into advanced stages of panic scrambling to find a substitute. The bigger clubs have so many to choose from they often have to arrange rotations to give competitive players a game.”* The Milang Bowling Club is proud to advise that their **GSBA Women's Regional Pennants Division 2** team won the minor premiership for season 2025-2026, winning 13 of their 14 games. The Milang ladies then went on to convincingly win the first Semi-Final and then the **Grand Final**.



Milang 74 points defeated **McLaren Vale 48 points** on 05 March in the GBA Women's Regional Division 2 Semi-Final held at Milang.

Left: Milang bowler Sue Bond prepares to bowl in the Semi-Final.



Milang went into the Grand Final against McLaren Vale with confidence but there was an anxious build-up as Team 2 skipper Bev Mullins fell ill.

Left: Milang's Bev Mullins prepares to bowl early in the Grand Final.

Julie Whitcher



The Grand Final was held in near perfect conditions on a well-prepared Strathalbyn green. A large crowd of supporters and interested spectators enjoyed the high-quality bowling and the host club's hospitality. The games were closely fought until half-way in the second half, but all three Milang teams (four players each) gradually forced ahead and maintained their leads to win **64 points to McLaren Vale 45**. GSBA executives presented the shield and medals to the smiling Milang ladies who went on to 'Jacob's Run' for well-earned celebrations.



Heather Maddern

Below: GSBA Women's Regional Pennants Division 2 Minor Premiers and Grand Final Shield Winners 2025-2026:- Milang.

Top L-R: Julie, Jennie, Jane, Heather, Sue.

Middle: Jacky, Deb, Cheryl, Irene.

Front: Doris, Lee, Bev, Colleen.





Recycling for the future

Strathalbyn RECYCLING

15 Dry Plains Road, Strathalbyn. Ph 85363999

- Pays cash for all 10c deposit items
- Also accepting – non deposit glass such as jars and wine bottles, paper, cardboard, scrap metal, non deposit plastics with no's 1,2 & 5 inside the recycling triangle & clear soft plastic.

Trading hours

- Tuesday 9am-4pm
- Wednesday 9am-12pm
- Thursday 9am-4pm
- Saturday 9am-1pm
- Closed all public holidays



Recycling for the future

Murray Bridge RECYCLING

55 Thomas Street, Murray Bridge. Ph 85324551

Trading hours

- Monday to Friday 8am-5.30pm
- Saturday 8am-12.30pm
- Closed public holidays



Murray Bridge Recycling can provide Waste, Recycling and Document Destruction collections for home and business in the following areas:

Murray Bridge, Mannum, Tailem Bend, Mt Barker, Strathalbyn, Milang and Langhorne Creek.

Call Todd on 0419 829 050 for more information or to organise a quote for a bin to suit your needs.

ENVIROX AINE



GARDEN MAINTENANCE
TREE PRUNING
GREEN WASTE CHIPPING
LOG SPLITTING
GENERAL DIY
STUMP GRINDING

NO JOB IS TOO SMALL

0402 808 542
ENVIROX AINE@OUTLOOK.COM.AU

Expert advice on health issues



More competitive prices

- * Medical certificates
- * Vaccinations
- * Medication packaging—Webster Packs
- * Sleep Apnoea management
- * Diabetes management
- * Script reminders

Strathalbyn Village Pharmacy

10 Dawson Street, Strathalbyn

Shop 5 10-17 Daranda Tce, Milang

Shop 1/10 Braemar Dr, Strathalbyn

T: 08 8536 2266

T: 08 8537 0785

T: 08 8536 2612

Open Mon-Fri (Exc. Thur) 9am—2pm





Proudly Serving Milang

t: 8398 5566
rebekhasharkie.com.au



Authorised by Rebekha Sharkie MP,
U3, 22-28 Hutchinson St,
Mount Barker, SA, 5251

**Would you like to advertise in the Milang
Community News?**

If so, please contact

Cathy Fish

Email: editor@milang.org.au

0416 077 584

ARE YOU BUSHFIRE READY?

TRIVIA ANSWERS



From Page 17

By Jude Aquilina

1. Variety
2. Essendon
3. M16
4. The philtrum is the vertical groove running from the nose to the upper lip
5. A bell tower
6. Longreach
7. To wrap around its body for warmth
8. Elephants
9. Faster than sound
10. Chris Minns

ROB WHEATLEY CONSTRUCTIONAL STONEMASON

0438 584 586

Over 25 YEARS EXPERIENCE

SPECIALISE IN MATCHING
EXISTING STONEMASONRY

**RUINS RESTORATION • REPOINTING
RETAINING WALLS • SLATE PAVING
CRACK REPAIR • UNDER SETTING
FEATURE WALLS • FIREPLACES**

WE WILL TRAVEL



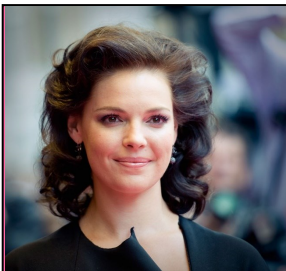
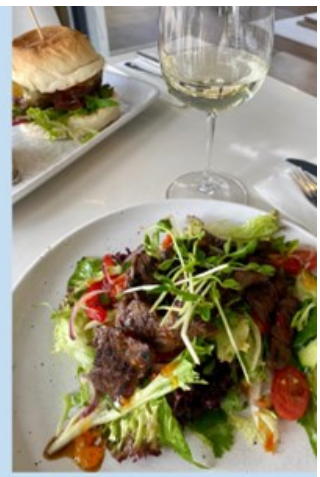
Opening hours:

Wednesday, Thursday
and Sunday 9:00am - 5:00pm
Friday 9:00am - 9:00pm
Saturday 9:00am - 9:00pm

For bookings:

Phone: 08 8537 0275
admin@thelocalclaytonbay.com
28 Island View Dr, Clayton Bay, SA

thelocal_claytonbay
 thelocalclaytonbay



Julie's Hair About Town

Hair care for all the family

By appointment only

Cutting | Colouring | Perming

Ph 0413 318 663



JACOB'S LADDER TREE
SERVICES

SERVICES

- Arborist
- Tree Pruning & removal
- Council Reports
- Rope & Harness Work

Our Website
Jacobsladder.net.au

0413 599 128



The
OFFICE
Shop

Locally owned since 1989,
old fashioned face to face
friendly service

14 Coral Street Victor Harbor 5211
t: 08 8552 2177
e: sales@theofficeshopvh.com.au



* Mobile Device Centre - Sales - Helpdesk - Accessories & Repairs
* Phone Bill Health Checks * Stationary Supplies * Toners & Inks
* Business cards * Office furniture and much much more

Home, Buses, Caravan Curtains and covers
Made to Measure
Ivy Fraser

LAKESIDE CURTAINS

0413803797

Shop 3 10-17 Daranda Tce Milang
Mon - Thurs 10am - 3pm Saturday 10am - 3pm

Milang Lakeside Caravan Park

National Tourism Industry

Accredited Park

PARK FACILITIES

- ◆ Pet friendly
- ◆ Boom gate
- ◆ Kiosk
- ◆ BBQ undercover area
- ◆ Ensuite cabins
- ◆ Standard cabins
- ◆ On-site vans
- ◆ Powered sites with sullage
- ◆ Unpowered sites
- ◆ Van storage
- ◆ Dump point
- ◆ Full tourist information
- ◆ Happy friendly service

Owners—Bob & Betty

PH 08 8537 0282

1 Woodrow Drive, Milang SA 5256

Email milangcp2@gmail.com

<https://www.milangcaravanpark.com.au>



'Life is Good at the Lake'

Your local tyre & auto service experts



Mechanical servicing from \$189*

Our expert mechanics are qualified to handle all types of repairs and services, so you can go with confidence.



We stock Ironman 4x4 and ARB

Australia's leading brands in 4x4 suspension and accessories.



Proudly part of this community for three generations

Strathalbyn
3/34-52 Milnes Rd
☎ 7544 6444




Service Centre

*T&Cs apply. Visit in store for full terms and conditions.



Mobility Scooters
 Wheelchairs
 Batteries
 LED Lighting
 Camping Accessories
 Health Care Products
 Solar Panels
 Servicing and Repairs



12 Volt Sales
 6a Rankine Street Strathalbyn
Phone: 8536 2144
 www.12VoltSales.com.au



Bespoke Delights
 Café & Keepsakes
 0411 250 883
 bespokedelights24@gmail.com
 Shop 2 10-17 Daranda Tce, Milang

Check our socials for opening hours



Milang Bakery
 29 Luard Street Milang
 Open Mon-Fri 6:30am-4:30pm / Sat 6:30-3pm / Sun 8:45am-3pm
 Pies, Pasties, Cakes, Bread, Rolls, Pastries
 Party Orders Welcome Ph 08 8537 0086




Milang Post Office
 18 Luard St,
 Milang SA 5256
 Ph (08) 8537 0061



- * Banking Agents
 - * International Currency
 - * Cash and Master Cards
 - * Inter flora Agent
 - * Western Union Agent
 - * Full Range of Stationary & Gifts
 - * Parcel Service
- 

Strath Corner Bakery
 8536 3570
 Mon-Fri - 6am-5pm
 Sat & Sun- 7am-5pm
 3/1 Dawson St, Strathalbyn




Baked daily, a full rang of pies, pasties, sausage rolls, quiches, cakes , fresh rolls and sandwiches. Coffee, tea, hot chocolate and a full range of cold drinks and juices.
 A great place to enjoy a snack or lunch.

Local Plumbing & Gas Fitting
 Reliable - Friendly - Affordable

- *After Hours Emergency
- *All domestic plumbing repairs
- *Hot water *Repair/Replace
- *Gas Fitting *New/Existing
- *Rain water & pumps
- *All marine & mobile homes
- *Gas catering equipment

Call Andy or Jay:
0408 807 212

FEEL HEALTHIER NATURALLY

Louise Armitage qualified Bowen Therapist and Homeopath
 Bowen Technique-gentle bodywork for all muscle pain

Homoeopathy-for all common health conditions

Around 20 years experience; health fund rebates may apply

14 Albyn Tce Strathalbyn and also Milang

Ph (Bus) 8536 8070 for more info
 www.lahomoeopathy.com.au

Milang Mini Mart
 PH 8537 0801



Open 8am to 8pm Mon – Sunday
 Shop 9, 10-17 Daranda Terrace, MILANG

Groceries	Hamburgers	Sandwiches & Rolls
Fresh Meat	Hot Dogs	Pies & Pasties
Fruit & Veg	Mahalia Coffee	Cakes & Pastries
Fresh Fish	Fleurieu Milk	Ice

'Friendly Staff' Sandy and Michael Moar



LIVE MUSIC
in

MAY & JUNE

SUNDAY SESSIONS 1-4PM



**10
MAY**

ELLA & SIENNA



**24
MAY**

JESSI JASMINE & LUKE



**7
JUN**

GLENN SKUTHORPE



**21
JUN**

TBA



This live music event is FREE but we welcome donations to help us host more local musicians.

Light meals, coffee, cake and drinks available for purchase

**DARANDA TCE, MILANG
TO BOOK CALL: 0480 512 457**

