

# Milang Community News

A journal of the Milang & District Community Association  
Supporting the communities of Milang, Ashbourne, Clayton Bay,  
Finniss, Strathalbyn and Langhorne Creek

\$2.50

February 2026



## FROM THE EDITOR

Welcome to the February 2026 edition of the Milang Community News.

What a horrible month it has been weather wise. I want to extend my sympathy to all of the communities around Australia who have had to deal with loss of life, livestock and property from the severe bushfires and floods.

January was a very busy month at the Butter Factory with lots of fabulous entertainment every Sunday.

It's been 5 years this month that I have been the editor of the Milang Community News (*minus a few editions that I could not do due to personal reasons*) and I have loved putting together every edition. I certainly have a better appreciation of how long a month is *hahaha!!!*

Please stay safe, stay cool and have a great month.

Cheers

Cathy Fish

editor@milang.org.au

## Contributions to the Milang Community News

The Editor eagerly looks forward to receiving articles and welcomes suggestions from community members for stories and photographs.

Email: [editor@milang.org.au](mailto:editor@milang.org.au)

Mail: PO Box 416 MILANG SA 5256

Copy should reach the editor by the **21<sup>st</sup> of each month** and must include the contributor's name, address and contact details. **Articles of fewer than 500 words are encouraged.**

Milang Community News reserves the right to refuse advertisements and other submissions. The editor reserves the right to change content for accuracy or where space is limited.

If you would like the Milang Community News photographer to attend an event to photograph subjects of local interest, please email the editor

Email: [editor@milang.org.au](mailto:editor@milang.org.au) or leave a message at MOSHCC 85370687.

Where to buy the  
Milang Community News  
available at \$2.50 per copy

- Milang Mini Mart
- Milang Community Centre (MOSHCC)
- Milang Post Office
- Milang Bakery
- Milang Caravan Park
- Bespoke Delights
- Finniss General Store
- The Local—Clayton Bay

## DISCLAIMER

The Milang Community News is produced on behalf of the Milang and District Community Association Inc (MADCA).

The committee of the Association accepts no responsibility for damage of any form which may occur as a result of the contents of this publication.

The opinions expressed in the Milang Community News are not necessarily those of MADCA.

## ADVERTISING RATES

Full page	\$120.00
Half page	\$70.00
Quarter page	\$40.00
Eighth page	\$25.00
Advert set up	\$35.00

For all advertising contact

Cathy Fish

Email: [editor@milang.org.au](mailto:editor@milang.org.au) or leave a message at MOSHCC 85370687

**We acknowledge the Ngarrindjeri people on whose land we meet and we pay our respects to the Elders past and present.**

**Ngarrindjeri Vision for Country: Kungun Ngarrindjeri Yunnan (Listen to what Ngarrindjeri people have to say)**

"Our Lands, Our Waters, Our People, All Living Things are connected. We implore people to respect our Ruwe (Country) as it was created in the Kaldowinyeri (the Creation). We long for sparkling, clean waters, healthy land and people and all living things. We long for the Yarlumarṛu (Sea Country) of our ancestors. Our vision is all people Caring, Sharing, Knowing and Respecting the lands, the waters and all living things." - From Ngarrindjeri Nation Yarlumar-ruwe plan 2006

**Love the Milang Community News and want to save the trees ?**

**Go to <https://milang.org.au/> and download your free copy OR simply call MOSHCC reception on 8537 0687 and let us know your email address to receive your FREE monthly News Letter.**

# Chairperson's Monthly Report

## February 2026



The monthly MADCA meeting was held on Thursday 22nd of January 2026 with seven in attendance. Apologies from Penny Whittaker, Karen Burkinshaw and John Whyte. John is on the sick list and we wish him a speedy recovery.

Lakes Home Care Manager Annie Whyte presented the Lakes Home Care monthly clinical report and provided feedback on teething problem/delays of the transition to the new Federal Government "Support at Home" program which took effect on the 1st of November 2025. Software and new systems implementation have resulted in delivery delays. LHC Staff adapting to new procedures.

MADCA CEO Stuart Jones presented his monthly report :-

SA Social Impact grant \$3,460 achieved to fund Community Garden bird netting is now available. Defibrillator grants and E.F.S. Milang Campus gift will see three Defibrillators installed at the Institute, Youth Centre and Lakes Home Care/Butter Factory.

Work on the full renovation of The Youth Hub is underway thanks to the Impact 100 Grant.

A space Education and Early Childhood Services came into effect 1st of December 2025 with official regulation under Education Standards Board as a residual service. Increased security fencing height to open playground area is underway. Compliance Registry is up to date. CEO to review policies including Food safety documentation for Butter Factory Kitchen. Draft Lease from Minister for Education over MOSHCC land tabled for review/renewal.

Alexandra Council letter dated 6.1.2026 tabled regarding the transfer of Crown Lease of Community Gardens Land at 61 Coxe St Milang.

Proposal: The Education Department is to transfer Title to Alexandrina Council to enable on-going MADCA lease of the land from Council for continuation of Community Garden purposes.

CEO to investigate terms of existing Alexandrina Council leases of Community Gardens at Clayton Bay and Goolwa so we can better understand the Council's precedent re Lease terms and conditions and financial impost so that we are in the best position to response to Council by 27th February 2026.

Outstanding Volunteer contribution of 11,105 hours in 2025. Current active volunteers 90, Friday Feasts returned on the 9th of January 2025, Feast@Home kitchen team are back on track.

Sticky Beaks Men's group 2026 visits locked in with Murray Bridge 10 Pin Bowls scheduled for third Tuesday in the month - 18th February 2026. "5 Ways in 5 days to Wellbeing" workshops delivered 27.11.2025 we well received. "Be active" follow up workshops are in the planning stage.

Butter Factory Sundays Live music and Open Mike (3rd Friday in the month) and Pizza Nights (2nd and 4th Friday in the month) have proved to be very popular and well attended.

Make sure you mark Saturday 7th February 2026 @ 1pm in your diary for another of Norm and Glenis popular Country and Western afternoons with Brian Letton and Dianne Coombes in Concert.

Placement of Butter Factory Kitchen Supervisor position is a priority. A huge thanks to Life Member Karyn Bradford for her tireless volunteer support in the interim.

CEO to attend Governance Masterclass/Leaders Institute of SA.

Community Gardens representative Ros Francis to communicate to Community Garden members MADCA's ongoing commitment/ support in relation to Title transfer of 61 Coxe St Milang site.

Vice Chairperson Mike Galea to formulate Butter Factory Business Plan as ratified by Committee for communication to BF Steering Sub-Committee with Financial/Cost Benefit Analysis to be attended in conjunction with CEO Stuart Jones and Treasurer Karen Burkinshaw.

Motion put to change the name of Milang Community News to Community News to better represent the broader Communities of Ashbourne, Clayton Bay, Finniss, Strathalbyn and Langhorne Creeks was defeated.

Motion that we offer Non profit/Volunteer organizations in our demographic a one 1/4 page monthly Milang Community News add placement at no cost was confirmed.

Kind regards

**Wayne Footer**

**MADCA Chairperson**

# Line Dancing

***Fun, music & movement.  
Come & join in!***



**Every Tuesday  
1pm-2.30pm**

**@Milang Institute Hall  
23 Coxe St, Milang**

**Cost \$5 session**

*Wear comfy clothes & bring a drink bottle!*

Register your interest at

Milang Old School House Community Centre

**8537 0687**

***Why not try  
something new?***

**MILANG**  
OLD SCHOOL HOUSE  
COMMUNITY CENTRE



## Stepping On'

**Keep Active ... Stay Strong**



## Strength for Life

**Tuesdays from 10—11am at  
The ACE SPACE at MOSHCC**

A weekly one-hour exercise class using gentle and controlled movements to improve strength, balance, flexibility and coordination in a fun and supportive environment. Small group, suitable for all abilities, (priority given to CHSP clients), EMAA (Easy Moves for Active Ageing) Trained Instructor.

Good balance is needed to keep us moving about confidently and safely.

**Phone: 8537 0687** Cost: Gold Coin Donation

## TAI CHI



Tai Chi happens at 1pm on Wednesdays in the Milang Supper Room.

A New Year. A fresh start.

We are all a work in progress!

Maybe you're keen to open up to new discoveries.

Tai Chi creates opportunities to move your body gently,

improving balance & flexibility are amongst other benefits

and with a little practice, less tension too!

A softness returns as we release tension.

You're welcome to come and try - see if it suits you.

Contact Jen 0412595102 for more information.



## Over 50's Keep Fit Class

**Milang Institute Hall**

**Thursday 10am-11am**

**All Welcome**

**For info call MOSHCC 8537 0687**

*We won't let our body succumb to old age.*

*Therefore, we try to prevent that by strength and stretch movements (and laughs and giggles)*

*Every Thursday between 10 and 11 o'clock.*

*So do your body a favour and join us.*

The sadness of  
a summer gone  
is purchasing tomatoes  
for the first time.  
My over-ripe bounty  
finally harvested  
though their smell lingers  
in contrast  
to the clinical package  
of pale orange orbs  
I thrust  
into my trolley.



### Alaska's got troubles

Fred Bray

We awake in awe, seeing icebergs abundant  
Glacier Bay cruising, Alaska, USA.  
A freezing cold wind, chills to the bone,  
everybody's on deck, there's a glacier to view.

Rotating slowly, past this monster in white,  
fractured ice, calving huge chunks,  
it cracks and groans, attacking the water,  
icebergs then drift past our ship out to sea,

Guests taking photos, a wonder of nature.  
Rangers telling of an unfolding drama,  
it's melting too quickly, the seas are rising,  
and our earth, is getting warmer.

People ask, please, can you explain this disaster,  
our fated, predictable, climate change failure...  
What can we do? Bark to the skeptics?  
If only they could view this place themselves.

### Train of Life

Geoff Graetz

Green flag for the train of life,  
starts with a bump, a sudden cry  
a pulsation of pistons  
slowly gaining speed.

A chugging and a rattle  
wind in the hair  
regular hum of rails  
new vistas at each bend.

Teeny boppers' sway and swing  
bouncing from side to side  
train barrelling onward  
eagerly rolling faster and faster.

Now approaching rail junction  
choosing which line to take  
the chosen line soon into rugged peaks  
topping the range for downhill run.

Onward across wide auburn deserts  
prickly bushes, rocky vales  
red signals of illness  
palm-fringed oases warmly beckon.

Slower, slower, descending hush  
memories projected on window panes  
gently easing to a stop  
terminus reached...what lies ahead?



Poets are encouraged to submit their poems for Poets Corner.

Poets must include their contact details for the editor.

Send poems to: PO Box 251 Milang 5256 or [jude\\_poet@yahoo.com.au](mailto:jude_poet@yahoo.com.au)



# FEAST @ HOME

**Delicious fresh cooked meals by our chef**

**EVERY THURSDAY**

Ready to eat meals!  
preorder your choice of meals  
for collection or delivery

Call reception for more information 8537 0687  
{Free local delivery to your door}

**MILANG**  
OLD SCHOOL HOUSE  
COMMUNITY CENTRE

**LAKES HOME CARE**  
your community  
your choice



Join us on the 4th Monday of the month from 2pm in the ACE Space at the Milang Community Centre to share some movie watching time together.

You can check what the next movie is at MOSHCC reception by phoning 8537 0687.

The cost of afternoon tea will be \$2.50.  
We hope to see you there.



MILANG & DISTRICT COMMUNITY ASSOCIATION INC.

## Volunteers Needed

**We need your help!**  
if you have a few spare hours & enjoy assisting the community, we would love to hear from you!

- Receptionist - Tuesdays 1pm - 5pm
- Kitchen Hand - Wed, Thur, Fri - 3 hr shifts
- Drivers - various shifts
- Gardeners - Tues 9am -1pm/ Thurs 130pm
- Youth Group - Fridays 3.30pm - 6pm
- Weekend Receptionist & Providore Sales
- Weekend Kitchen Hand

☎ 8537 0687    ✉ reception@moshcc.com.au

**MILANG**  
OLD SCHOOL HOUSE  
COMMUNITY CENTRE

**MILANG**  
LAKESIDE BUTTER FACTORY

**LAKES HOME CARE**  
your community  
your choice

## Mr Fill-It has a new home in Clayton Bay

Di Day and Chris Francis have recently opened 'The Local' café at Clayton Bay. Many people would know Di and Chris from Milang where they ran the 'Mr Fill-It' van for over 4 years.

Not only will their famous 'Fish & Chips' be on the menu on a Friday night, but the café will also serve meals including schnitzels, burgers and other specials, together with breakfast favourites like bacon and egg rolls or eggs benedict. Also, great coffee, yummy cakes and local wines will be available.

The Local will also supply a fantastic array of local produce and general grocery items for sale and will certainly become the 'The Local' dining, shopping and meeting place for Clayton Bay and surrounding areas.

The Local will be open 5 days a week (Wednesday to Sunday) – Wednesday, Thursday & Sunday 9am to 5pm and on Friday and Saturday 9am to 9pm.





**THE LOCAL**  
Clayton Bay

**Opening hours:**  
Wednesday, Thursday  
and Sunday 9:00am – 5:00pm  
Friday 9:00am – 9:00pm  
Saturday 9:00am – 9:00pm

**For bookings:**  
Phone: 08 8537 0275  
admin@thelocalclaytonbay.com  
28 Island View Dr, Clayton Bay, SA

 thelocal\_claytonbay  
 thelocalclaytonbay



*Di Day, Chris Francis and Harry*

We are the  
**FIBRE ART GROUP**

We meet at the Milang Institute on  
**Tuesdays**  
at 10.30 am. to 3.00 pm.



Bring your own creative fibre work :-  
Knitting, Crochet, Spinning,  
Weaving, Sewing. etc. etc.



We charge a \$3 attendance fee which  
covers Tea or Coffee and Hall fee.  
Bring your own lunch!



Occasional Tutorials  
during the year.



Phone Heather :-0424395503.



**Calling all Knitters/Crocheters,  
ex & wannabe Knitters /Crocheters!!**

*Or*

Anyone who would like to be part of the 'Just Yarning Group' group, please call Lyn on 0407 370 079.

We meet at 10.30 on Thursday mornings at the  
*Milang Mini Mart Café and Providore*  
to knit squares to be sewn together to make rugs that  
will be distributed locally to those in need.  
Donations of 8ply wool would be greatly appreciated  
and can be left at (MOSHCC) Milang Community  
Centre. If you are interested or have any queries,  
Please contact Lyn - 0407 370 079



## CARD AFTERNOONS

This is an open invitation to anyone who may be  
interested in coming to our card afternoons every  
Tuesday at the Community Centre.

Time is from 1pm to 4 pm with a cuppa and cake  
included at a cost of \$2.50. The games played are  
Crib, Canasta and Jonola, but could include Euchre  
and Rummy.

Those wishing to learn will be given free  
tuition. Come along for a fun couple of hours.

For more information,  
phone MOSHCC on 85370687



**Fridays 10-11am**

**ACE Space @ MOSHCC**

**24-25 Daranda Tce. Milang**

*A non-judgmental space for women  
to be together, connect, share &  
chat over a Cuppa.*

Facilitated by Kathryn from AKOM Counselling  
(not sure what to expect, have a chat with Kathryn 0447 144 119)  
**Free, bookings not necessary**





"BL Recordings Proudly Presents"

# BRIAN LETTON IN CONCERT

*Live*

Don't Miss This  
Opportunity To See  
Australia's Premier  
Country Crooner  
Perform "Live"  
During His 2026  
National Concert  
Tour

BOOK  
NOW

*With Special Guest:*

**DIANNE COOMBES**

## MILANG BUTTER FACTORY

**SATURDAY: 7TH FEBRUARY 2026 @ 1PM**

Bookings - Tel. Glenise: 0401 638 464. Norm: 0428 222 942.



"Tickets Also AT The Door"

Tickets: \$25.00



BRIAN LETTON OFFICIAL

## Rainfall for January 2026



Thu 08/01/2026	0.02 mm
Fri 09/01/2026	0.03 mm
Sat 10/01/2026	0.04 mm
Wed 14/01/2026	0.01 mm
Fri 16/01/2026	0.01 mm
Sun 25/01/2026	0.01 mm
Wed 28/01/2026	0.38 mm

January Total 0.5 mm

*Information sourced from the Elders  
Weather website*

Attention Milang Community  
members:

During the school holidays some serious damage was made to the basketball court at the Primary School by a bike/e-bike. If anyone has seen anything recently, could you please contact the school on 85362455 ext 4. Thank you.



**Milang Oval Museum**

**Open Sunday 1pm-4pm**

Entry Gold Coin Donation

Other times by appointment

Call 0437 800 811 or 0438 843 367

**WE'RE BACK ON THE 9TH OF JANUARY 2026!**

# FRIDAY FEAST

Join us on Friday's @12:30 for  
lunch & great company!

**\$12 for a two course meal**  
Vegetarian options  
located in the ACE Space

Milang Old School House Community Centre  
23-24 Daranda Tce, Milang  
Call reception to make your booking 8537 0687

**EVERY FRIDAY!**  
(except public holidays) (Transport available)

**MILANG**  
OLD SCHOOL HOUSE  
COMMUNITY CENTRE



# Christmas Hampers & Helpful Handbags 2025

*(In the January edition the article for the Christmas Hampers was for 2024 instead of 2025. Please see the correct article below.)*

This year was even bigger and better than last year! With the help of local non-profit organisations, businesses and the community, over 245 Christmas Hampers were handed out to local families in need, including 27 from Milang and Districts.

Besides the Christmas Hampers, MOSHCC volunteers Asha Jones and Katie Whittam made Helpful Handbags from donated bags and personal care items. Thirty bags were given to local women for additional Christmas support.

Team Milang members, Peter Williams, Katie Whittam, Cameron Davidson, Vickie Schmidt, and Harry Van Eunen, were among many volunteers who helped with the two-day process of creating numerous hampers for different family sizes. What an incredibly rewarding experience to give at this time of year, and the Hampers would not have been possible without the kindness of donations and the countless hours of volunteering involved.



# Milang Easter Market

with **EXTRA** undercover stalls

9am to 3pm, Easter Saturday, 4th April 2026  
at the Milang Railway Station

Free train rides all day, lunches, refreshments,  
lots of stalls including arts & crafts, bric-a-brac  
and a whole lot more!



**Stall reservations are now being taken**

Market Stalls \$25 each + optional tables \$5

*(same as last year)*

Undercover stalls \$30 includes ready to use table

Bookings Contact - Cathy Fish (Editor)

Please send an email to [editor@milang.org.au](mailto:editor@milang.org.au)  
(preferred)

OR call 0416 077 584 and leave a message.

# 5 WAYS IN 5 DAYS TO WELLBEING

DAY 2  
BE ACTIVE

26.02.2026



ALL AGES WELCOME

START FROM: 1PM - 4PM

LOCATED: LAKESIDE BUTTER  
FACTORY

22-23 DARANDA TERRACE, MILANG

LIMITED BOOKINGS  
FOR BOOKING USE QR CODE

## WHAT THE DAY HAS TO OFFER

### Smile N Drum

Community Connection Drumming offers a fun, energising, and social experience that supports overall wellness.

### Rossy Reeves

A supportive, gentle, guided creative process workshop facilitated by licensed Holistic Counsellor Rossy Reeves



SCAN ME!



Supported by



MILANG  
OLD SCHOOL HOUSE  
COMMUNITY CENTRE



Government of South Australia  
SA Health

LAKESIDE  
MEN'S SHED IN MILANG



Presented by **Victor Harbor VIEW Club** in conjunction with  
**David Basham MP**, Member for Finnis

# International Women's Day

*Breakfast* and  
**2026 Fleurieu Women's Community Award**

Friday 6 March 7:30am  
Encounter Bay Football Club  
Tickets on sale soon

**Do you know an inspiring Fleurieu woman?  
Nominate her for the 2026 Fleurieu Women's  
Community Award.**

Go to this website for more information and a nomination form...

[davidbasham.com.au/fleurieu-womens-community-awards](http://davidbasham.com.au/fleurieu-womens-community-awards)



**DAVID BASHAM MP**  
MEMBER FOR FINNISS

*Delivering for the community*



As the **local State Member of Parliament**, I along with the electoral office staff, are here to engage & assist the electorate of Finnis. We would be pleased to meet you closer to home and regularly hold catch ups across the electorate.

**WE WELCOME YOU TO CONTACT US.**

The **Finniss Electorate Office** is located at 71 Victoria Street, Victor Harbor & open Monday to Friday, 9am-5pm.

P: (08) 8552 2152

E: [finniss@parliament.sa.gov.au](mailto:finniss@parliament.sa.gov.au)



For updates go to: [www.davidbasham.com.au](http://www.davidbasham.com.au) or    

# TRIVIA



Answers Page 47

By Jude Aquilina

1. Approximately how many kilometers to drive around Australia on Highway 1?
2. Moolah is a slang term for what?
3. Courgette is another name for which vegetable?
4. Gout results from an accumulation of which acid in the blood?
5. In which capital city was tennis star Alex De Minaur born?
6. In what year did Milang hold its first 'Yesterday's Power Rally'?
7. Name the famous singer born Robert Zimmerman
8. What is the proper name for Australia's water rat?
9. What is the value of the letter X in Scrabble?
10. How many strings are on a violin?

## ATEC—White Card Training



With the recent success of the Milang Youth Hub refurbishment Impact 100 grant, we were able to provide ATEC- *White Card* training to local youth and MADCA volunteers. This means the group is now fully compliant and able to assist safely on the construction site.

The training has also created a valuable pathway for young people, equipping them with practical skills and qualifications that support future employment opportunities.

**Congratulations Team**



## ALREADY READ BOOKS

## ALREADY READ BOOKS (ARB)

**January 2026**

Not a great deal to report on ARB during the Christmas NY break. During January with the help of visitors to Butter Factory and 'The Live Music' weekends ARB had \$577.35 generously donated from locals and visitors passing through.

Unfortunately, we're still not able to take any more books. We worked hard over the last couple of weeks, moving, sorting and 'binning' books and magazines, (that were either dirty, torn or not appropriate) to make space.

Remember ARB is accessible every weekend the Butter Factory is open. The bookshop will be staffed every other weekend. Books can be taken and donations left either in a Donation tin or by credit card at the Butter Factory Kitchen.



**FRIDAYS  
TERM 1  
2026**

Arvo Club  
8-12yrs



3:30-4:30

teen Hang  
13yrs +



4:30 - 6:00

**30 - JAN**

**DAY SPA**

**MINI GOLF**

**6 - FEB**

**Jewellery Making**

**Freestyle BMX**

**13 - FEB**

**ARVO HANG**

**YOUTH HANG**

**20 - FEB**

**TIE DYE TEES**

**Bike & E-Bike  
MECHANICS**

**27 - FEB**

**STAND UP PADDLE BOARDING**

**6 - MAR**

**ARVO CLUB HANG**

**YOUTH HANG**

**13 - MAR**

**ART WORKSHOP**

**AEROSOL ART**

**20 - MAR**

**KAYAKING**

**27 - MAR**

**EASTER EGG HUNT & HANG OUT**

**3 - APR**

**NO SESSION - GOOD FRIDAY**

**10 - APR**

**OLD SCHOOL SPORTS DAY**



**CONTACT LOREN**

[loren.steenkamp@reclink.or.au](mailto:loren.steenkamp@reclink.or.au)



## MEDIA RELEASE

David Basham MP Member for Finniss



### **Mundoo Island 1907ha National Park**

---

06 January 2026

David Basham MP  
Shadow Minister for Climate and Environment  
Member for Finniss

"Investment in Mundoo Station Shows the Power of Community Advocacy"

"The investment by the State and Federal Governments in Mundoo Station is a welcome outcome and a strong acknowledgement of the environmental significance of the Lower Lakes and Coorong region."

"As Shadow Minister for Climate and Environment, I have consistently supported efforts to protect critical sites like Mundoo Station, which play an important role in water quality, environmental health and the long-term sustainability of the Lower Lakes system."

This outcome has been driven in no small part by the determination and advocacy of local residents.

"I particularly want to thank the Clayton Bay community, whose residents have been unwavering in their efforts to ensure governments understood what was at stake. Their commitment to protecting Lake Alexandrina, local amenity and the surrounding environment has been exemplary."

"This decision demonstrates that when communities speak with a clear and united voice, governments are compelled to listen."

"While this investment is an important step forward, it is equally important that it is followed by transparent management, ongoing community engagement and clear outcomes for the environment and local residents."

"I will continue to work with community members, local stakeholders and environmental groups to ensure this investment delivers genuine, long-term benefits for the Lower Lakes and ensures community voices remain central to future decision-making."

"Protecting places like Mundoo Station is about more than land acquisition — it is about safeguarding our environment, our regional communities and the future of South Australia's precious waterways."

Media Contact: Catherine Jamieson 8552 2152

<https://www.realcommercial.com.au/news/once-in-a-lifetime-trio-of-islands-hits-the-market-for-the-first-time-in-more-than-100-years>

# GARDEN TO PLATE PROJECT

## 2025/26

Funding was generously provided by Community Centres SA and the South Australian State Government to support the establishment of a garden where fresh produce could be grown, harvested, and used in the kitchen. The original plan was to locate the garden within the crèche playground at the Milang Old School House Community Centre (MOSHCC). However, as several garden beds were later created in this space using existing materials, a decision was made to relocate the project to the Milang Lakeside Butter Factory.

The Milang Lakeside Butter Factory is also managed by the Milang and District Community Association Inc. (MADCA). The relocation of the garden beds aligns with the site's broader restoration plans, which include developing a productive garden to supply fresh food to use in the kitchen.

Preparation of the area was undertaken by the Butter Factory Work Crew, marking the beginning of what is becoming a thriving and productive garden space.

To support community learning and participation, training videos supplied by Community Centres SA were used at MOSHCC to help local community members learn how to construct wicking garden beds.

Materials were provided through the grant funding, and with the support of dedicated MADCA volunteers, the garden beds were established and planted, with seedlings soon beginning to flourish.

Volunteers continue to care for and maintain the garden, with the produce successfully harvested and used in the kitchen, allowing freshly grown, local ingredients to be incorporated into the menu.

We are sincerely grateful for the funding received and have thoroughly enjoyed the journey, which has provided valuable learning opportunities and created another meaningful space for community connection and engagement.



**GARDEN TO PLATE**  
*RAISED GARDEN BEDS*  
*& WICKING BEDS*

Join the 'Garden to Plate' gardening team to learn about raised garden beds & wicking beds

Assist with the ongoing maintenance & further planning

Thursday's  
2PM-3PM  
LAKESIDE BUTTER FACTORY

**CONTACT MOSHCC  
RECEPTION FOR MORE  
INFORMATION  
8537 0687**

**MILANG**  
OLD SCHOOL HOUSE  
COMMUNITY CENTRE

**MILANG LAKESIDE BUTTER FACTORY**

**Community Centres SA**  
Strengthening Local Communities





*More photo's on the next page*



## River, lakes and waterways getting some attention

Listing the Lower Murray River as 'critically endangered' under national environmental law, Minister for the Environment and Water Murray Watt, drew national attention to local conditions many of us are only too aware of.



The Coorong, Lower Lakes and Murray Mouth Research Centre (CLLMMRC) was a fitting location for this recent announcement as our Science Program's research examines specific areas he identified.

And while much recent local concern has quite rightly been about the marine environment and the coastal algal bloom, our work focuses on the lower lakes, Murray Mouth and the Coorong. We collaborate with universities, community organisations, governments, peak bodies, and First Nations peoples, described by the Minister as "a really good model for the rest of the country as well."

Some threats he identified "...over-extraction of water, feral animals, habitat loss, weeds, and salinity ... made worse by increasingly severe droughts and floods caused by climate change..." are examined in CLLMM projects, which we hope to continue and expand with further funding to develop our work beyond 2026.

Since CLLMMRC beginnings in Goolwa in 2023, we now have more than 150 researchers working on twenty-nine priority areas identified through community consultation, developing an information base for informed decision making.

The Research Centre Projects include examining the impacts of climate change on the wetlands,

*Continued next page*

lakes, river, and beaches and how this is affecting people, iconic native and migratory species, native vegetation and freshwater sources, revegetation post-Millennial drought and threats to ocean beaches.

Some of our researchers are in the field, examining habitats for lokeri (local mussels) rakali (local aquatic rodent), rupia (sea grasses), talking to different users of our beaches, or using predictive modelling to help managing agencies identify and prepare for threats.

We like to be exploring different ways to share our work and next up is our Science Speed Dating! Join us for a night of lively conversation with some of our researchers. Friday 6 February 6 – 830pm <https://cllmmresearchcentre.org/whats-on/>

Play in our ‘sand box’ – an immersive tool to examine environmental water provision scenarios and explore future climate conditions to support both short- and long-term planning. <https://cllmmresearchcentre.org/project/immersive-experience-cllmmrc/>

And you can share your views about how to manage the different uses/users of our ocean beaches.

<https://survey123.arcgis.com/share/7569d08c4d5e42bd890809897e5fe98e>



**ABOUT US:** Based in Goolwa, the Coorong Lower Lakes and Murray Mouth Research Centre (CLLMM RC) works collaboratively with First Nations, and community and organisations on projects which investigate the significant challenges posed by climate change throughout the region.

## How a Painting Actually Begins (Before the Brush Touches the Canvas)

Most beginners believe a painting begins the moment the brush hits the canvas. In reality, that moment comes much later. Long before paint is mixed or marks are made, something quieter—and more important—is already happening.

A painting usually begins with *looking*.

Not casual looking, but slow, intentional observation. It's the moment you notice how light falls across a surface, how one colour leans warmer than another, or how a shadow isn't just dark, but full of subtle shifts. Beginners often rush past this stage because it feels unproductive. Nothing visible is being made yet. But this is where the foundation of the work is laid.

Next comes *simplifying*. Before painting details, artists break what they see into basic shapes and relationships. A tree becomes a vertical mass. A face becomes angles and planes. This step is crucial for beginners, because many struggles come from trying to paint “things” instead of shapes, tones, and proportions. When you simplify, you give yourself something manageable to work with.

Then there is *decision-making*. Even before the first mark, choices are being made:

What is the focus?

What can be left out?

Is this about colour, mood, movement, or light?

Beginners often think these decisions happen later, but making a few early choices prevents confusion halfway through the painting. You don't need all the answers—just a direction.

Another quiet beginning happens internally: *permission*. Permission to experiment. Permission to get it wrong. Permission to let this

painting be a learning experience rather than a masterpiece. Many beginners stall because they expect the painting to succeed from the first stroke. Experienced artists know the first marks are simply a conversation starter.

Sometimes a painting also begins with *preparation*. This might mean toning the canvas, laying out colours, or doing a quick sketch. These small actions help ease the transition from thinking to doing. They remove the pressure of the blank surface and invite movement.

Finally, the brush touches the canvas—not with certainty, but with curiosity. By this point, the artist isn't asking, *Will this be good?* but rather, *What happens if I try this?*

For beginners, understanding that a painting starts well before the brush can be freeing. It shifts the focus away from immediate results and toward awareness, choices, and process. The painting isn't something you jump into—it's something you arrive at.

In my art classes, I mentor you through this entire process step by step. I help you slow down, learn how to truly see, and trust your own observations. Rather than copying or rushing to the 'finished' stage, I guide you in building strong foundations so your paintings feel intentional and expressive. With clear demonstrations, individual feedback, and practical exercises, you learn not just *how* to paint, but *how to think like a painter* — long before the brush touches the canvas.

Cheers

### ***Madeleine Elkin - Artist***

Clayton Bay, South Australia

(m) 0401 839 592

(e) [madielkinartist@gmail.com](mailto:madielkinartist@gmail.com)

Website: [www.maearts.com](http://www.maearts.com)

Facebook: <https://www.facebook.com/madi.elkin>

Instagram: <https://www.instagram.com/madielkin/?hl=en>

YouTube: <https://www.youtube.com/channel/UCeE9kNld3Vui4HUXeAX4ejQ>



# Playgroup at EFS Milang Campus

## Term 1—Me and my family

### February 2026



Week	Date	Activity focus.
2	3/2/26	Welcome back to Playgroup!
3	10/2/26	About me. Handprint mural and card.
4	17/2/26	Festivals. Chinese new year. Paper lanterns/ Masks.
5	24/2/26	About me. Body outline paintings.



# Playgroup

## Milang & Langhorne Creek R-6 Campuses

Our playgroups cater to families with children from birth to 5 years.  
Attendance is FREE

Playgroup is a fun and welcoming space where children can learn, play, and make friends — all while building confidence and important social skills.

With varying programs each term, we endeavour to provide activities that challenge, stimulate and entertain!

Milang playgroup is run every TUESDAY morning during school term at the Milang R-6 campus. 9am - 11:30am  
Head of Campus - Merran Jolley  
ph. 85362455

Langhorne Creek playgroup is run every FRIDAY morning during school term at the Langhorne Creek R-6 campus. 9am - 11:30am  
Head of Campus - Les Cameron  
ph. 85362455



MILANG YOUTH HUB

# VOLUNTEERS NEEDED

## We Need Help With

- Art & Craft
- Cooking Classes
- Kayaking
- Fishing
- Woodwork

You may have heard we have a new YOUTH HUB in Milang!! We need volunteers for a variety of beautiful programs with passionate and committed people involved to provide the best for the young people in our community. In return we will help build a community around you!

Food, Fun and Laughs Provided.



Come join us!

REGISTER NOW

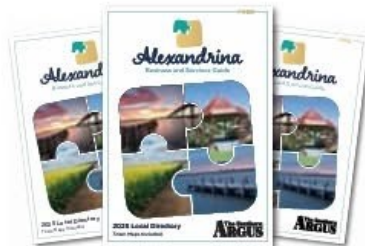
Volunteer Coordinator  
vickie@moshcc.com.au  
8537 0687

**MILANG**  
OLD SCHOOL HOUSE  
COMMUNITY CENTRE

# ATTENTION!

Service Groups, Community Organisations,  
Clubs & Sporting Groups

List your contact details for **FREE!**



To include your Club's contact details to appear in the **NEW 2026 Alexandrina Business and Services Guide**, free of charge, email your Club/ Organisation name, phone number and contact name to:  
[argus@southernargus.com.au](mailto:argus@southernargus.com.au)

**The Southern ARGUS**

# CHILD SAFE ENVIRONMENTS TRAINING

**Wednesday 25<sup>th</sup> March**  
**@ 9:30am - 12:30pm**



**Location: Milang Lakeside Butter Factory**  
**22-23 Daranda Tce, Milang SA 5256**

## **ABOUT CHILD SAFE ENVIRONMENTS: THROUGH THEIR EYES TRAINING**

CSET: topics include:

- child protection in context, values and attitudes
- legislative obligations when working with children and young people (including screening obligations)
- risk and harm – abuse-related trauma
- sexual abuse and online grooming
- responding to disclosures
- child safe environments in organisations
- reporting a reasonable belief of risk and harm.

The training supports participants to understand types of risk of harm to children and young people, including:

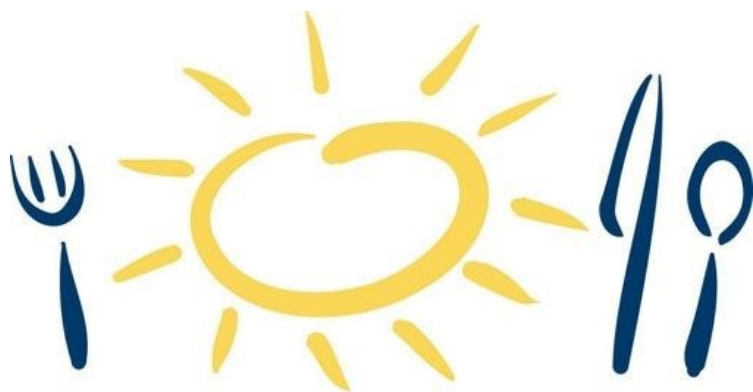
- neglect
- psychological/emotional harm
- domestic violence
- sexual abuse, and
- physical harm.

If you are concerned about attending this program, please speak to the facilitator before attending the course to discuss your options.



**MILANG**  
OLD SCHOOL HOUSE  
COMMUNITY CENTRE

**Please contact MOSHCC to register**  
**ph. 8537 0687**



# Meals on Wheels

*We deliver smiles<sup>sm</sup>*

Please call 1800 854 453

for information on how to order

## Justices of the Peace

Please ring for an appointment

**Leon O'Driscoll 8537 0051**

**Karyn Bradford 0412 036 900**

**Gloria Jones 0427 370 047**

**Alcoholics Anonymous** is a fellowship of men and women who share their experience, strength and hope with each other that they may solve their common problem and help others to recover from alcoholism.

Meetings every Sunday at 5pm

Reg Sissons Day Care Centre, High St Strathalbyn

Contact 24 hours (08) 8221 6999

## Mental Health Support

- Lifeline: 13 11 14
- Beyondblue: 1300 22 4636
- Suicide call back: 1300 659 467
- Living beyond Suicide: 1300 761 193
- Men's Health Line: 1300 789 978
- Parent Helpline: 1300 364 100
- Kids Helpline: 1800 55 1800
- Rural & Remote Mental Health 1300 515 951

the  
power of  
humanity



## Red Cross February 2026

Thanks to all who helped and supported the Red Cross at The Yesterdays Power Rally.

Please follow our Facebook page for any updates.

The Cheer Up Hut will be open on the 1<sup>st</sup> Wednesday & 1<sup>st</sup> Saturday of each month from 9am until Midday, depending on volunteer availability.

If anyone is in need of clothing at any time, please Contact or Tracy on 0417299391. Discretion is assured.

The small trading stall by the oval entrance has a selection of Books, DVD's, Plants & Toys etc. A donation Box is available at the stall.

All funds raised help in the upkeep of our premises etc.

Thanks to everyone for your support for the Red Cross.

We would love to have more volunteers they are urgently needed. If interested, please Contact Tracy on the above No.

Our meetings are now Bi-Monthly on the first Wednesday of the month. The next meeting will be on the 5<sup>th</sup> Mar at 12.30 at Bec's Kitchen.

Please do not leave donations at the Shop or Hut unless we are there.

**Doris & Chris Lambert**

**Publicity Officers**



## MILANG CFS NEWS

*Jude Aquilina*

Milang Brigade attended two very large fires recently. The first one was a substantial shed fire at Peats Soil at Langhorne Creek in late December. This fire destroyed a \$250,000 shed that was used to hold recycling material from the yellow bins that are collected from the roadside. The fire is believed to have been started by a battery that was put into a bin.



The second fire that Milang CFS, and many other brigades, attended was at Tooperang, where 10 separate fires were accidentally started along Nangkita Road by a piece of vintage machinery on the back of a truck that was driving along. These fires quickly took hold with several of them joining up into one big one. Multiple fire trucks, water bombing aircraft and private units attended. The fire burnt 660 hectares, claimed two homes, several sheds, outbuildings, and some machinery.



This is a timely reminder to make sure you have a bushfire action plan in place, and that you have sufficient clearings, breaks and truck access around your home and sheds.

Tuesday night trainings have kicked back into gear for Milang CFS, after a few weeks off. These sessions have included the annual chainsaw training and a pumping exercise. If anyone is interested in joining, please make contact via Milang CFS Facebook page. We are always looking for more volunteers.

# ALLSORTS OF ENTERTAINMENT GOOLWA MATINEE PROGRAM

FRIDAY FEBRUARY 20 at 2PM

The Brit Parade



Join top Adelaide band The Crew on a time-traveling journey through the UK's greatest hits.

Relive the magic of Top of the Pops and the unforgettable tunes that once ruled the airwaves.

Brit Parade is a nostalgic countdown of British pop classics — bringing back the songs you love and the memories that never fade.

FRIDAY MARCH 20 AT 2PM

IT TAKES TWO

Delivering hit after hit.



It Takes Two! blends nostalgia, heart, and humor into an unforgettable afternoon of music.

Hits of Marvin Gaye & Tammi Terrell to the playful charm of Sonny & Cher and the country twang of Kenny Rogers & Dolly Parton.

The expanded show now features even more legendary duets, including Ed Sheeran & Beyoncé, Lady Gaga & Bradley Cooper, Bryan Adams & Mel C, and Stevie Nicks & Tom Petty

Timeless classics and plenty of sing-along moments, this must-see show promises to delight music lovers of all ages.

Tickets \$22 & transport \$15  
bookings via [reception@moshcc.com.au](mailto:reception@moshcc.com.au)  
8537 0687



**MILANG**  
OLD SCHOOL HOUSE  
COMMUNITY CENTRE



GOOLWA CENTENARY HALL  
14 CADELL STREET, GOOLWA



## Butter Factory Report January 2026

Happy New Year to all, from all of us at the Butter Factory. It's been an extremely busy start to the year, we've been open every Friday night for pizzas, Saturday and Sundays for the whole of January.

Karyn and her kitchen staff have been incredible providing fantastic food for our visitors, with the pizzas going really well.

The maintenance crew (the A team) have had a well earned break for January, we'll get things going again in February with a couple of exciting little projects.

The 'Garden to Plate' project with its beds of amazing produce has survived the hot spells thanks Ron and is starting to be harvested.

Don't forget upcoming events, Sam Hissey and Ellie Boss on Sunday 1st February and the Brian Letton concert on Saturday 7th February.

*Cheers*



*Our Christmas Lights*



*A great jam session to finish off Ópen Mic'on the 9th*

*Geistare, with her amazing, powerful voice*



*Ellie and Sienna, what a show, what a day, our best so far (and the weather was perfect)*

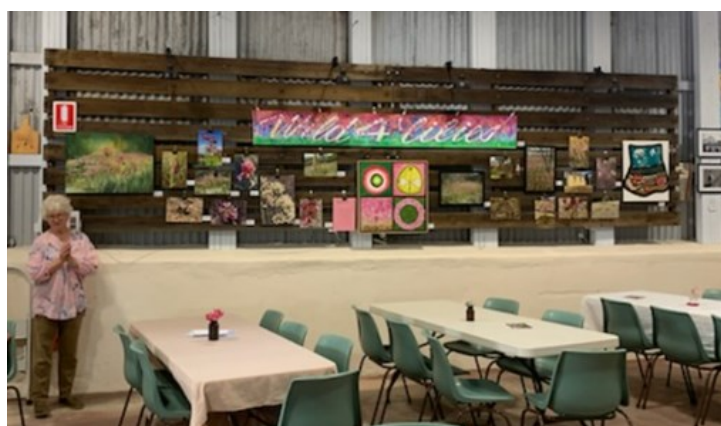


*More photo's next page*



*Taylor Pfeiffer finishing her set with a banjo instrumental*

*The Woolly Johns getting them up on the dance floor 11th Jan*



*Candy with her Wild 4 Lilies exhibition*

## Milang Community Garden

### Newsletter Article

**February 2026**

Here we are well into 2026 already! Hopefully everyone has had an enjoyable festive season and are now moving back into the new year's routines after a good holiday break.

The garden never sleeps and so we have all been working throughout the Christmas/New Year holiday season around the other duties, family festivities and holidays. It's been great to see more visitors dropping in to the garden over this time.

The fruit trees are always the major attraction at this time of the year. *"No rest for the wicked"* as the apricots all ripened at once and the birds knew it! So, it was a mad rush scrabbling under the nets, to get the delicious, sweet fruit off before it went off or into the tummies of those fine feathered friends who are experts at getting through the nets!.



*Netted fruit trees*

The white peaches have finished, also very quickly. At the time of writing we are now picking plums and the early nectarines. There will be more to come with yellow peaches, more plum varieties, figs and then the apples and pears, and finally the later crop of quinces.

If you are after a feed of fruit or veggies, herbs and salads, it's best to pop into the garden on a Tuesday to see what's on offer. Beans are currently the best crop so far. The regulars like carrots, parsnips, cucumbers, capsicums etc are all on their way or being planted.



Tomatoes have been disappointing this year, but we are hearing that everyone is having the same issues. There are still some ripening but not in the usual quantities. So, it appears that it's a bad season so far, for tomatoes generally!

We are just starting to load the cart with surplus pickings. Keep an eye on the *Milang (SA) Community* Face Book page for a weekly update on what's on the cart.

*If you would like to get involved in the garden, please come down and see us! We will welcome any helpers who have some time, and interest to dig in, to keep this productive and beautiful community garden going for years to come! No great knowledge of gardening required! Best way to make friends, get a good feed and learn about gardening, and become involved with the community. (P.S The morning teas are always good! Shhhh!)*



Purple Beans



Tomatoes, Sweet Potatoes and Carrots



Everlastings, native garden

MILANG & DISTRICT COMMUNITY ASSOCIATION INC.

# COMMUNITY GARDEN

## SEEKING VOLUNTEERS

Bringing community together to Grow, Share, and Cultivate a Greener Future!

To join - Contact Us today!  
8537 0687

MILANG  
OLD SCHOOL HOUSE  
COMMUNITY CENTRE



**2nd & 4th Friday 5-8pm**

pizza & wine

**Saturday & Sunday 10-4pm**

kitchen is open for light meals, coffee and cake

**We hold regular live music events - check our Facebook and Instagram for details**

## **WE ALSO HOST**

Kanoetree Wines Cellar Door

Local providore

Local artists' work on display

Butter and cheesemaking museum

Already Read Books - second hand bookstore raising money for continued maintenance of the Butter Factory



**KANOETREE  
WINES**

**DARANDA TCE, MILANG - TO BOOK CALL: 0480 512 457**

LIVE MUSIC  
*in*

# FEBRUARY & MARCH

SUNDAY SESSIONS 1-4PM



1  
FEB

SAM HISSEY & ELLIE BOSS



15  
FEB

MEGAN LAURIE



1  
MAR

THE RENEGADES



15  
MAR

STRATHALBYN  
SUPERSTAR SHOWCASE



29  
MAR

THE RENEGADES

**MILANG**  
LAKESIDE BUTTER FACTORY

This live music event is FREE but we welcome donations to help us host more local musicians.

Light meals, coffee, cake and drinks available for purchase

DARANDA TCE, MILANG  
TO BOOK CALL: 0480 512 457



KANOETREE  
WINES

# MILK AND CREAM SUPPLIERS TO MILANG BUTTER FACTORY

by Alwyn Hopgood

## James and Ethel Whitfield

James (Jim) Whitfield came to Australia as a young boy of nine, on the *Nebo*, leaving Plymouth, England on 28<sup>th</sup> November 1881. He arrived in Australia in 1882. His father had come to Australia earlier to prepare a home for the family.

James married Ethel Prouten in 1909 when they lived on a property on Lake Road. There was an old stone and cement trough on the property. Janet Jones was told it was built by Edward Prouten. The couple bought a farm at *Watson Park*, Milang and in 1913 their only child Ruth was born. In 1915 tragedy struck, when Jim was accidentally killed.

Ethel continued to run the farm with help from friends and family. Ethel added a milking machine to her dairy. When Ruth left school, she helped her mother milk and tend the farm.

Ethel died in 1966, aged 88 years, and is buried with her husband in the Milang Cemetery.

Ruth was educated at the Milang Primary School and Strathalbyn High School, and wrote stories and poetry and kept a dairy of her life. Ruth married John Christopher Anthony 'Jack' Esterhuizen, who was born in Aberdeen, South Africa, and came to Australia as a teenage stowaway.

The Whitfield property of 200 acres was situated about three kilometres northeast of Milang. They took their cream and milk to the Milang Butter Factory by horse and cart. They sometimes took turns with their neighbour, the Sherry family, in transporting milk.

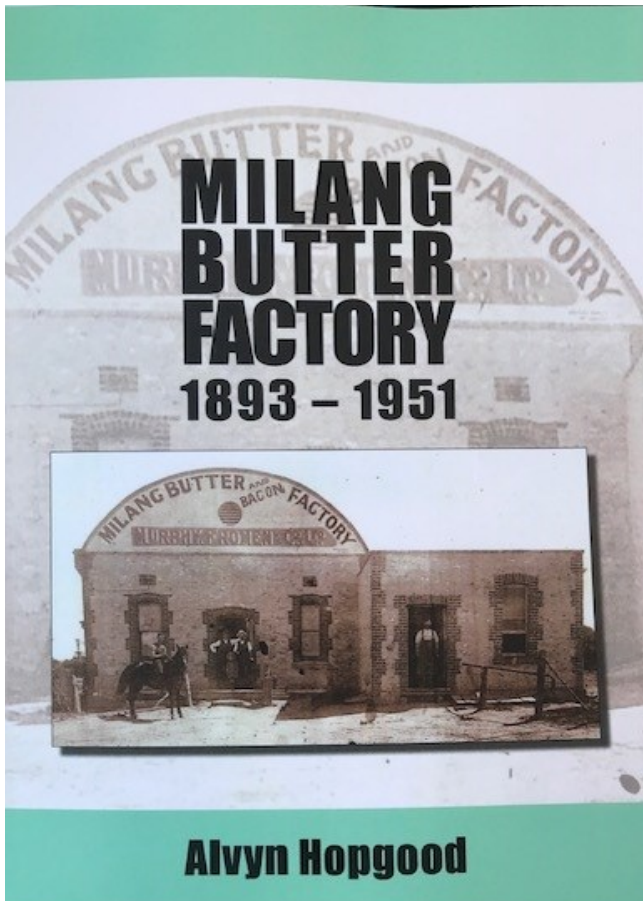
Ruth Esterhuizen contributed all her life to the Milang district and was the most sincere, truthful person you could imagine; her work and effort for the *Alexandrina's Shore* book by Jim Faull (Milang and District Historical Society, 1981) was one of her masterpieces.

John and Ruth Esterhuizen had four children: Allan, Una, Jim and Janet. In the 1940s, John and Ruth Esterhuizen began a small flood irrigation plot on their property to supplement their feed for their dairy cows. It consisted of 12-foot lengths of galvanised fluming, four inch in diameter, fitted with a coupling each end.

John came to see my father, Whinham Hopgood, asking if he could make this fluming up. He agreed he could. This meant four x three feet lengths of 24-gauge galvanised flat iron had to be cut, turned up, hand seamed, riveted, and soldered to make the 12 foot lengths. My memory is that my father and I made up 14 x 12 foot sections for this job for Mr and Mrs Esterhuizen. I believe it worked to their satisfaction.



*Jim and Ethel Whitfield*



## NOW AVAILABLE

*As a Milang local I am thrilled to present Alvyn Hopgood's slices of social history in this brilliantly researched book—of our own town, the people who once lived here, of the lake and cream delivering paddle steamers, and of award winning butter made at Milang Butter Factory, I commend Alvyn Hopgood on his marvelous book.*

*Jude Aquilina, editor, publisher*

**\$30.00 each**

***Available from***

MILANG OLD SCHOOL HOUSE  
COMMUNITY CENTRE -

Monday to Friday 9—5 pm

MILANG LAKESIDE BUTTER FACTORY

Saturday & Sunday 10—4 pm

# HISTORIC GRAVES OF THE MILANG CEMETERY

## THE DUNK FAMILY

by Alvyn Hopgood

William Peter Dunk was a son of Henry Dunk of Brompton, Kent in England, and was born on July 16<sup>th</sup>, 1838. He married Emma Chalklen just before emigrating to South Australia. They arrived on January 9<sup>th</sup>, 1858, coming to Milang in 1859.

In 1862, William Dunk was a trustee in the Milang church; in 1860 he is listed as a Milang Rifleman, and as a member of Milang Voluntary Defense Corps. He was also the owner of blocks in Milang West. By 1870, Milang was thriving and William Dunk was a busy carpenter. In 1881, William was on the committee which lobbied to obtain a railway to Milang. It was successful, with the railway opening in 1884.

For many years, William Dunk was in partnership with AH Landseer, plying the river trade with steamers and barges. Between 1870 and 1920, William contributed significantly to the town's social and cultural life – hardly any organization in the town, did not have his full support and generous help.

William Dunk was a tall man of 6'5", and his contribution to Milang gained him the title of the 'outstanding father' of the town, and to some he was known as 'Grandpa Dunk'. He attended over 40 Milang Regattas from 1864 to 1904. He was also active in many clubs: tennis, cricket, football, regatta, and the scouts. He was also heavily involved in the Church of England and Milang School. William was an ostrich breeder, and part of the Milang Racing Club in 1895. On September 25<sup>th</sup>, 1920 William was unanimously selected by the Milang town to present WWI soldiers with gold medals; and he presented to the next of kin for the fallen boys, a circular badge of gold with a violet enameled centre. All the badges were suitably inscribed. 45 returned soldiers received these medals on that memorable day.

William Dunk and AH Landseer were, without doubt, the two most influential men ever to grace Milang. William Dunk was the first in Milang to have a car. His wife Emma was an immense help to him over the years, and after her parting, he installed a stained-glass window in the Milang Church of England in her honour, with the following inscription: *To the glory of God and in loving memory of Emma Dunk who died 9-11-1917 – one how loved her church.*

William and Emma Dunk's son Ern was also very prominent in Milang. He married Dolly Tinks, and both of them cherished Milang, putting in many hours of community work. They occupied the house and land called *Langmead*, before building their own home in Ameroo Avenue, Milang.

Ern Dun was auditor of the once Bremer Council and took over as manager of his father's business after his father passed in 1924, which was called WP & H Dunk. Ern also held the position of Harbour Master, and was a keen participant in the Milang Model Parliament. In all, there are nine Dunks interred in the Milang Cemetery.





# Stickybeaks

## February Outing

### Stickybeaks Men's Group

On the 3<sup>rd</sup> Tuesday of the month, the men's group set off on the bus to have a stickybeak at places and spaces around the area.

They usually find a shady spot for morning tea, spend time checking out places of interest (a different one each month), and have lunch at a pub, bakery, or restaurant.

If this sounds like something you would like to do and join in the adventures, contact **Milang Community Centre** for more information on **85370687**.

STICKY BEAKS MEN'S GROUP

## BRIDGE BOWLING



Tenpin Bowling is great fun and nowhere is better than Bridge Bowl, enjoy two bowling games shared with your mates.

**BOWLING \$24 | BUS \$15**  
**LUNCH ADDITIONAL COST**

**MILANG**  
OLD SCHOOL HOUSE  
COMMUNITY CENTRE

Limited bookings contact  
MOSHCC Reception  
**8537 0687**  
by 12<sup>th</sup> of February

## Dates to keep in mind for Sticky Beaks adventures

### Projected activities for 2026

Month	Date	Event	Location	Price
Feb	17th	Bridge Bowling	Murry Bridge	Tenpin Bowling x2 games
Mar	17th	Adelaide Goal	Adelaide	Tour \$17.50 bus \$15
Apr	21st	Go Karting	Motorsports park Tailem Bend	Karting \$35 bus \$15
May	19th	National Wine Centre Tram to Glenelg	Adelaide to Glenelg - Return	Tour \$25 bus \$15 Tram free for SA senior card holders
Jun	3rd	PS Marion Day Cruise	Swan Reach - Bowhill	Tour \$75 bus \$15

# Weekends at Milang Station 12 to 4



**Museum, Craft Shop  
& Free Train Rides**

**Plus the Cafeteria Car  
On Sundays only**

**Devonshire Tea \$6  
Gourmet Burger \$10  
Steak Sandwich \$10  
Cappuccino \$4  
Iced Coffee \$5  
Cheese Dog \$5  
and lots more ...**



**Volunteers needed for maintenance, train driving, guides, cafeteria staff, etc.**

**[www.milangrailway.org.au](http://www.milangrailway.org.au) or 0414 232 060**

## Lakeside Men's Shed at the oval

**BBQ every Thursday (donation)**

**From 12:00 noon**

Come and experience our relaxed atmosphere and share yarns with other like-minded people.

Take the opportunity to check out the Men's Shed facilities and current projects.

The Lakeside Men's Shed is working to assist in men's mental health issues and is supported by SA Health and the local community.



## Milang Environmental Centre Serving our community

The Milang Environmental Centre is a community run organisation and an asset to the residents of Milang.

**Ph: Geoff 0428 845 171 or Chris 0411 474 529**



### Services:

- Recycling depot for glass, plastics, metal and garden organics.
- Bottles and cans deposit paid.
- Recycled items for sale.
- Electronics, household and garden wastes incur a fee.
- Nutrient-rich Garden Mulch for sale

**Hours: Wednesday and Saturday 10am - 3pm**

**Corner of Weeroona Drive and Jupiter Street MILANG**

# All Aboard

## Inside the Green Shed

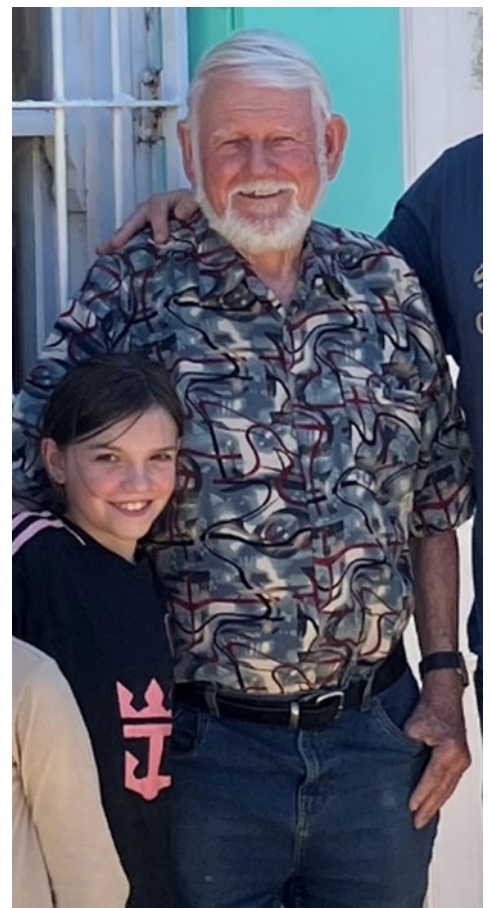
Have you ever wondered what's in that little green shed at the junction of Luard Street and Daranda terrace? That's the shed adjacent to the weighbridge. Recently the shed was cleared out and restored to reveal the weighbridge mechanism. It's just a great big balance machine.

In the photo you can see an arm across the top by the window. When the load is on the weighbridge, the operator slides the weight at the left hand end, along that arm until he gets an approximate balance which then shows the weight in tonnes. Then another small weight is moved along the smaller arm until an exact balance is achieved and the smaller arm then shows decimal parts of tonnes. In theory it could be used today to weigh vehicles but not legally because the calibration has not been checked for many years.



## The Post Office Lad

The Railway Museum recently had a visit by Leif Fergusen and his family. Many decades ago, Leif was the post office lad in Milang. One of his duties was to bring the outgoing mail down to the station to meet the train and then to return with the incoming mail. Because the train was often late he spent a lot of time sitting in the station chatting to the stationmaster. He was therefore able to tell us much about the internal layout and that information was used twelve years ago when we restored the interior. In particular, he told us about the location of the wall clock which was high on the wall above the stationmaster's chair. On many occasions he sat in the stationmaster's office watching the clock as the train was often late.



MILANG ENVIRONMENT CENTRE corner of Weeroona Drive & Jupiter Street Milang

P O Box 338 Milang SA 5256 Ph: 85370201 E: [milangenvironmentalcentre@gmail.com](mailto:milangenvironmentalcentre@gmail.com)

**OPEN: 10 AM – 3 PM WEDNESDAY & SATURDAY**

**MEC APOLOGISES:** The Milang Environmental Centre was scheduled to reopen on Wednesday 7 January following the Xmas break, however the extreme hot weather that day left no option but to remain closed. MEC apologises to anyone inconvenienced by the closure. MEC's **Geoff Dungey** informed MCN that from a workplace health and safety perspective it is neither safe nor fair to have volunteers working in temperatures over 35 degrees. *"MEC has an obligation to ensure that our volunteers operate in a safe environment."* When MEC did reopen on Saturday 10 January the small volunteer group available to operate the local recycling depot experienced the busiest day ever. **Geoff Dungey** advised that more than **14,000 recyclable items** were counted, sorted, crushed, stored, and a significant number of green garden waste loads accepted. **Geoff Dungey** said, *"I don't think the volunteers had a break that Saturday. What they accomplished was quite remarkable. Then on Wednesday 14 January more than **12,000 recyclable items** were processed. "It may well be an indication of what MEC can expect in 2027 when more drink containers will become part of the SA deposit refund scheme. MEC is busy creating storage space to meet the need for an expected 50% increase in items processed."*



The large scrap metal pile was recently collected and taken away as part of a general clean-up of the MEC site and facilities. *Photo:- C. Lambert*

MEC volunteer **Sharon Parker** has overseen the clearing out of two sections of the MEC operations building and already one section has been used for extra space to store drink containers before transport to Adelaide. Sharon told MCN, *“The introduction of storage cages late in 2025 has made a significant improvement to the way we handle processing and storage of recyclables, especially cans and plastic bottles. We had no option but to free up space for more storage because we are accepting more items, and the cages are only collected by the ‘super-depot’ once they are full. It is a bit sad that this meant the ‘Op-Shop’ stuff had to go but the fact is they just took up space and provided very little income. It also meant we have had to move the **MEC TV** and chairs, so now volunteer Micky Blanshard will have to watch ‘Horse Racing’ in another area, and volunteer Peter Miller will have sit alone watching ‘Parliament Question Time’ in another area.”*



The huge truck and loader sent by Royal Park Salvage part of the Allied Waste Services group that recently cleared away the MEC scrap metal pile. *Photo:- C. Lambert*



Scrap items recently ‘dumped’ outside the MEC gate just minutes before volunteers arrived to open.

MEC’s **Geoff Dungey** told MCN that while MEC volunteers are busy reorganising, cleaning the site facilities, streamlining processes, other people are doing the opposite. *“MEC security cameras recorded a fellow dumping items outside the gate just minutes before we arrived to open. That is disgraceful. He needs to apologise and make a donation.”* **MCN** understands that MEC is consultating with Alexandrina Council and commercial waste recycling operators about the future of MEC.

## MILANG BOWLING CLUB NEWS - FEBRUARY 2026 “MILANG ON TOP

The **Milang Bowling Club** is enjoying a successful 2025-2026 season in the Great Southern Bowling Association Fleurieu Regional Open Pennants Competition. As of 12 January 2026, over half way through the season, Milang teams **Open Division 3; are second place, Open Division 5 are in first place, Womens' Division 2 also in first place** and **Open Division 6 combined Milang and Langhorne Creek are placed sixth.**

It is a remarkable achievement for a small club competing against giants such as Victor Harbour and Encounter Bay who enjoy high playing membership numbers.

Furthermore, two Milang players, **Lee Robinson** and **Jacky Jacobs**, for the second-year running have been selected for representative duties in the **Bowls SA Region 7 Fleurieu & Kangaroo Island 2026 Women's Country Round Robin competition.** Milang Bowling Club President **Brian Patterson** regrettably nursing a broken right arm and unable to bowl for several weeks said: »*We predicted at the start of this season that our teams would do well and hopefully Milang will be playing finals in three different divisions;*«



**Milang bowler Jacky Jacobs**



**Milang bowler Lee Robinson**

On Saturday 10 January both Milang Division 3 and Division 5 teams played at home on the excellently prepared Milang green. **Division 3** had a good win against Victor Harbour White scoring 59 to 43 and earning 12 premiership points to cement second place. **Division 5** despite being down two experienced players, defeated Pt Elliott 78 to 41 earning 12 premiership points and confirming top place on the division ladder. **President Brian Patterson** explained that is difficult for small clubs like Milang to find substitute players and the two wins were all the more impressive because both teams had a player out unavailable due to injury.

Remarkably, Milang **Division 3** have eight of twelve regular players in the top ten regional player rankings including second year Milang player the very experienced **Peter 'Jake' Jacobs**, who is currently ranked top. Rink of the Week for the highest winning margin on Saturday 10 January was deservedly won by reshuffled **Division 5 Team 3** skippered by **Heather Maddern**, ably backed up by **Brian Addison**, **Peter Harris**, and **Debra 'Ra' Heywood** who impressed as a high performing substitute for the injured Brian Patterson.



Milang Div. 3 player Jake Jacobs



Irene Westley



Julie Witcher

Milang Division 5 player **Irene Westley** has consistently performed extremely well but is also patiently mentoring a new, inexperienced, distracted skipper **Peter Miller**. Irene has been well supported by **Jane Sorrell** and new Milang bowler **George Dziadek** who both bring the required experience that the meandering skipper lacks. In her second season at Milang, **Julie Witcher** was elevated to Division 3 and has made a valuable contribution to the teams' 2025-2026 success. All Milang players pay tribute to club volunteer **GREENKEEPER Greg Bowen** for his hard work in preparing an excellent playing surface. The Milang Bowling Club welcomes new members both playing and social members of all ages. Club facilities and events include fortnightly Friday meal nights. The scheduled Australia Day event at the Milang Bowling Club was cancelled due to high temperatures.

# LAKEs HOME CARE

Lakes Home Care can help you  
with your daily activities to  
make life easier and give you  
more time for you. Call us today  
on 85370687



**LAKEs**  
HOME CARE  
your community  
your choice

- Gardening
- Housework
- Shopping
- Transport
- Medical Appointments
- Equipment

## Church Services—Milang and surrounding areas

**Church Of Christ**, corner of Watson & Coxe Streets , Milang

Enquiries—Peter Wilson 0407 607 638

Sunday Service 9:30am

Friendship & Craft at the Church Hall—Wednesday 10:00am—12:00 Noon

**Uniting Church**, corner McDonald & Orana Streets, Milang

Enquiries—Nola Deer 8536 4429

Sunday Service 10.00am

**Anglican Church—St Marys**, corner Luard & Maroo Streets , Milang

Enquiries—Rev. Alex Stone 0405 084 794

Sunday Service—8.15am (1st and 3rd Sundays of the month)

### Lutheran Church

Cnr Commercial Road & North Parade, Strathalbyn

Pastor Matthew Edgecomb 8536 3322

**Catholic Church—Good Shepherd**, East Terrace, Strathalbyn

Father Richard Morris 8391 1053





Recycling for the future

# Strathalbyn RECYCLING

15 Dry Plains Road, Strathalbyn. Ph 85363999

- **Pays cash for all 10c deposit items**
- **Also accepting – non deposit glass such as jars and wine bottles, paper, cardboard, scrap metal, non deposit plastics with no's 1,2 & 5 inside the recycling triangle & clear soft plastic.**

## Trading hours

- Tuesday 9am-4pm
- Wednesday 9am-12pm
- Thursday 9am-4pm
- Saturday 9am-1pm
- Closed all public holidays



Recycling for the future

# Murray Bridge RECYCLING

55 Thomas Street, Murray Bridge. Ph 85324551

## Trading hours

- Monday to Friday 8am-5.30pm
- Saturday 8am-12.30pm
- Closed public holidays



**Murray Bridge Recycling can provide Waste, Recycling and Document Destruction collections for home and business in the following areas:**

**Murray Bridge, Mannum, Tailem Bend, Mt Barker, Strathalbyn, Milang and Langhorne Creek.**

**Call Todd on 0419 829 050 for more information or to organise a quote for a bin to suit your needs.**

# ENVIROX AINE

**GARDEN MAINTENANCE**  
**TREE PRUNING**  
**GREEN WASTE CHIPPING**  
**LOG SPLITTING**  
**GENERAL DIY**  
**STUMP GRINDING**  
**NO JOB IS TOO SMALL**

**0402 808 542**  
**ENVIROX AINE@OUTLOOK.COM.AU**

Expert advice on health issues



More competitive prices

- \* Medical certificates
- \* Vaccinations
- \* Medication packaging—Webster Packs
- \* Sleep Apnoea management
- \* Diabetes management
- \* Script reminders

Strathalbyn Village Pharmacy

Shop 1/10 Braemar Dr, Strathalbyn

T: 08 8536 2612

10 Dawson Street, Strathalbyn

T: 08 8536 2266

Shop 5 10-17 Daranda Tce, Milang

T: 08 8537 0785

Open Mon-Fri (Exc. Thur) 9am—2pm





# Rebekha Sharkie MP

Federal Member  
for Mayo

## Proudly Serving Milang

t: 8398 5566  
rebekhasharkie.com.au

Authorised by Rebekha Sharkie MP,  
U3, 22-28 Hutchinson St,  
Mount Barker, SA, 5251



### TRIVIA ANSWERS

From Page 15

*By Jude Aquilina*



1. 14,500 kilometers
2. Money
3. Zucchini
4. Uric acid
5. Sydney
6. 1997
7. Bob Dylan
8. Rakali
9. Eight points
10. Four stings

## ROB WHEATLEY CONSTRUCTIONAL STONEMASON

### 0438 584 586

Over 25 YEARS EXPERIENCE

SPECIALISE IN MATCHING  
EXISTING STONEMASONRY

**RUINS RESTORATION • REPOINTING  
RETAINING WALLS • SLATE PAVING  
CRACK REPAIR • UNDER SETTING  
FEATURE WALLS • FIREPLACES**

WE WILL TRAVEL

# Milang Lakeside Caravan Park

National Tourism Industry

Accredited Park

## PARK FACILITIES

- ◆ Pet friendly
- ◆ Boom gate
- ◆ Kiosk
- ◆ BBQ undercover area
- ◆ Ensuite cabins
- ◆ Standard cabins
- ◆ On-site vans
- ◆ Powered sites with sullage
- ◆ Unpowered sites
- ◆ Van storage
- ◆ Dump point
- ◆ Full tourist information
- ◆ Happy friendly service

**Owners—Bob & Betty**

**PH 08 8537 0282**

**1 Woodrow Drive, Milang SA 5256**

Email [milangcp2@gmail.com](mailto:milangcp2@gmail.com)

<https://www.milangcaravanpark.com.au>



**'Life is Good at the Lake'**

## Your local tyre & auto service experts



### Mechanical servicing from \$189\*

Our expert mechanics are qualified to handle all types of repairs and services, so you can go with confidence.



### We stock Ironman 4x4 and ARB

Australia's leading brands in 4x4 suspension and accessories.



Proudly part of this community for three generations

**Strathalbyn**  
**3/34-52 Milnes Rd**  
**☎ 7544 6444**



Service Centre

\*T&Cs apply. Visit in store for full terms and conditions.





**Bookings 8537 3010**

**Fine Beer**

**Great Food**

**Great Wines**



**Tuesday:**  
Bar opens 4pm to 8.30pm  
Meals 5.30pm to 7.30pm

**Wednesday to Saturday:**  
Bar opens 11.30am to 9.00pm  
Meals 11.30 am to 2pm and  
5.30pm to 8pm

**Sunday:**  
Bar opens 11.30am to 8.30pm  
Meals 11.30am to 2pm and  
5.30pm to 7.30pm

**Schnitzel night Thursday nights**  
**5.30pm - 8pm**

## Milang Bakery

**29 Luard Street Milang**

Open Mon-Fri 6:30am-4:30pm / Sat 6:30-3pm / Sun 8:45am-3pm

**Pies, Pasties, Cakes, Bread, Rolls, Pastries**

**Party Orders Welcome Ph 08 8537 0086**



## FEEL HEALTHIER NATURALLY

Louise Armitage qualified Bowen Therapist and Homeopath  
Bowen Technique-gentle bodywork for all muscle pain

Homoeopathy-for all common health conditions

Around 20 years experience; health fund rebates may apply

14 Albyn Tce Strathalbyn and also Milang

**Ph (Bus) 8536 8070 for more info**

**[www.lahomeopathy.com.au](http://www.lahomeopathy.com.au)**



**Café & Keepsakes**

0411 250 883

[bespokedelights24@gmail.com](mailto:bespokedelights24@gmail.com)

Shop 2 10-17 Daranda Tce, Milang



Check our socials for  
opening hours



**Milang Post Office**

**18 Luard St,**

**Milang SA 5256**

**Ph (08) 8537 0061**

- \* **Banking Agents**
- \* **International Currency**
- \* **Cash and Master Cards**
- \* **Inter flora Agent**
- \* **Western Union Agent**
- \* **Full Range of Stationary & Gifts**
- \* **Parcel Service**



## Milang Mini Mart

**PH 8537 0801**



**Open 8am to 8pm Mon – Sunday**

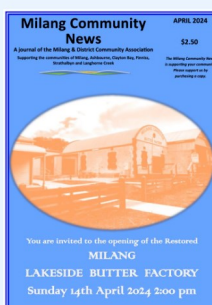
**Shop 9, 10-17 Daranda Terrace, MILANG**

Groceries	Hamburgers	Sandwiches & Rolls
Fresh Meat	Hot Dogs	Pies & Pasties
Fruit & Veg	Mahalia Coffee	Cakes & Pastries
Fresh Fish	Fleurieu Milk	Ice

**‘Friendly Staff’**

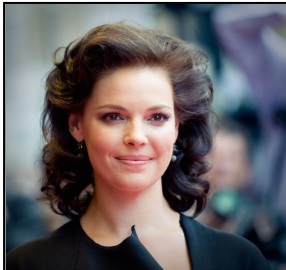
**Sandy and Michael Moar**

**Love the Milang Community News and trees?**  
**Go to <https://milang.org.au/> and download your free copy**  
**While you're there sign up to join the mailing list**



You can also get back copies of the community news in case you missed something

# ARE YOU BUSHFIRE READY?



## Julie's Hair About Town



Hair care for all the family  
By appointment only  
Cutting | Colouring | Perming  
Ph 0413 318 663

Home, Buses, Caravan Curtains and covers  
Made to Measure  
Ivy Fraser

## LAKESIDE CURTAINS

0413803797

Shop 3 10-17 Daranda Tce Milang  
Mon - Thurs 10am - 3pm Saturday 10am - 3pm

## Local Plumbing & Gas Fitting

Reliable - Friendly - Affordable

- \*After Hours Emergency
- \*All domestic plumbing repairs
- \*Hot water \*Repair/Replace
- \*Gas Fitting \*New/Existing
- \*Rain water & pumps
- \*All marine & mobile homes
- \*Gas catering equipment

Call Andy or Jay:  
**0408 807 212**

Alexandrina Plumbing/Lic. 4925

**The OFFICE Shop** Locally owned since 1989,  
old fashioned face to face friendly service

14 Coral Street Victor Harbor 5211  
t: 08 8552 2177  
e: sales@theofficeshopvh.com.au  
w: www.officeshopvictor.com.au

boost mobile  
brother  
EPSON  
Smart Choice  
TECH REPAIRS  
SHARP  
T

- \* Mobile Device Centre - Sales - Helpdesk - Accessories & Repairs
- \*Phone Bill Health Checks \* Stationary Supplies \* Toners & Inks
- \*Business cards \*Office furniture and much much more

## Strath Corner Bakery

8536 3570

Mon-Fri - 6am-5pm  
Sat & Sun- 7am-5pm



3/1 Dawson St, Strathalbyn



Baked daily, a full rang of pies, pasties, sausage rolls, quiches, cakes , fresh rolls and sandwiches. Coffee, tea, hot chocolate and a full range of cold drinks and juices.

A great place to enjoy a snack or lunch.

JACOB'S LADDER TREE SERVICES

## SERVICES

- Arborist
- Tree Pruning & removal
- Council Reports
- Rope & Harness Work
- Our Website  
Jacobs ladder.net.au

0413 599 128

### Mobility Scooters

Wheelchairs

Batteries

LED Lighting

Camping Accessories

Health Care Products

Solar Panels

Servicing and Repairs



### 12 Volt Sales

6a Rankine Street Strathalbyn

Phone: 8536 2144

www.12VoltSales.com.au



Would you like to advertise in the Milang  
Community News?

If so, please contact

Cathy Fish

Email: editor@milang.org.au

0416 077 584

SAVE THE DATE  
25<sup>th</sup> Feb 2026



# River Science Forum

The Committee of the RLCAG is pleased to announce the annual **River Science Forum** will take place on Ngarrindjeri Country on **Wednesday 25 February 2026** from **5:30 pm** at the **Clayton Bay Community Hall**.

*Acknowledging & celebrating **World Wetlands Day***

## Guest speakers (from 6:30pm)

- **Dr Emma Carmody**, newly appointed South Australian Commissioner for the River Murray – *presenting on Ramsar matters*.
- **Jarrold Eaton**, Assistant director, water quality and salinity, MDBA – *addressing water quality issues and the Basin Plan Review*.
- **Sam Blight**, Sustainability Officer, Coorong District Council – *discussing revegetation initiatives around the Lakes*.
- **Mark Koolmatrie** – *speaking on the significance of freshwater soaks to First Nations peoples*.

Please join us from 5:30pm for a feed of fresh fish

For catering purposes please RSVP to

[riverlakescoorong@gmail.com](mailto:riverlakescoorong@gmail.com)

All welcome



LIVE MUSIC  
*in*

MILANG LAKESIDE  
BUTTER FACTORY

# FEBRUARY & MARCH

SUNDAY SESSIONS 1-4PM



1  
FEB

SAM HISSEY & ELLIE BOSS



15  
FEB

MEGAN LAURIE



1  
MAR

THE RENEGADES



15  
MAR

STRATHALBYN  
SUPERSTAR SHOWCASE



29  
MAR

THE RENEGADES

**MILANG**  
LAKESIDE BUTTER FACTORY

This live music event is FREE but we welcome donations to help us host more local musicians.

Light meals, coffee, cake and drinks available for purchase

DARANDA TCE, MILANG  
TO BOOK CALL: 0480 512 457



KANOETREE  
WINES