

# Newsletter April May 2024



**Strath Neighbourhood Centre Inc**  
**6 Parker Avenue, Strathalbyn 0431 337 044**

**strathnc@gmail.com**

**Regular Weekly Activities**  
**Contact the office 0431 337 044**  
**for details**

**Monday afternoons 1 - 3.30pm**

Strath Neighbourhood Friendship Group  
Bingo from 1.00 pm every Monday. \$5

**Monday mornings from 9.30**

Herb Group 9.30 Last Monday of each month.

**Tuesday from 9.30am**

Wise Employment

**Tuesdays from midday**

Community Lunch  
2 course meal \$5 per person.  
All welcome

**Wednesday 9.00am - midday**

Repair Shed

**Wednesday 9.30am - midday**

Garden Grubs  
Home garden help

**Wednesday 10.00 - 11.00**

Fitness for Fun

**Wednesday 12 - 5.00pm**

Alexandrina Contract Bridge Club

**Thursday from 9.30 am.**

Wise Employment

**Thursday 10.00 - 3.00**

Table Tennis and community activities \$5  
Community Garden work

**Friday**

Community Rug and Fibre Group  
10.00 – 12.00 1<sup>st</sup> & 3<sup>rd</sup> Fridays  
Line Dancing 1.00pm—3.30pm



Huge **Thank You** to Brad Louch from **Back 2 Front Landscaping**. B2F are located here in Strath and have very kindly re-set up the irrigation in our raised garden beds. It's local businesses like Brad and Alea's, helping with a community project, that makes our town of Strathalbyn so great.

Another huge thank you to **Maidment's Meats** for their generosity in supporting our Community lunches.

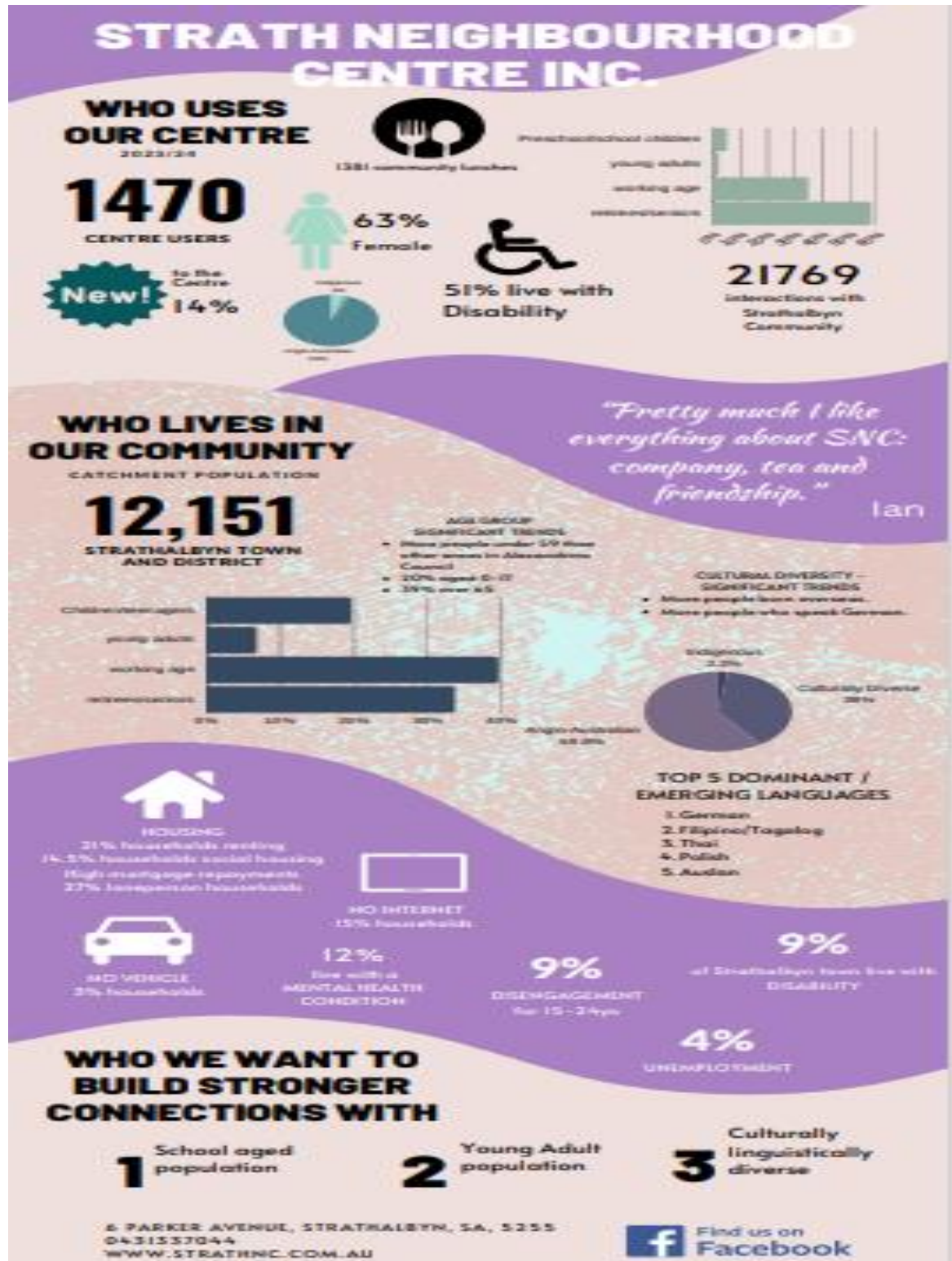
Bingo has begun on Mondays. From 1.00pm. Come in for some fun and join new friends. \$5 for 12 games.  
No alcohol, no cash prizes.

Don't forget to ring 0431 133044 to book your table of up to 8 for the Quiz Night being held on Saturday 25<sup>th</sup> May.



# Newsletter April May 2024

Below are some statistics relating to our town, taken from records at the Centre and from the ABS (Australian Bureau of Statistics) . Our Social Work student Teena has collated some of this information to give a snapshot of our community.



# Newsletter April May 2024

## *Did you know?*

This chart shows us a lot of interesting information about our Centre and our town.

Over the past 12 months we have had 1470 people who have used our Centre. 1381 community lunches have been served and 21,769 people have interacted in some way with our Centre.

From the Australian Bureau of Statistics, we know that there are 12,151 in the Strathalbyn town and district, and that there are more people under the age of 59 here than in any other area of Alexandrina Council.

We also know that the majority of our population is in the working age group, followed by seniors. then children and lastly young adults.

15% of households have no internet, 3% have no car, 9% live with disability, 12% with a mental health condition and 4% are unemployed.

These statistics highlight that there are many households struggling, which is why the Strath Neighbourhood Centre plays a vital role within the community.

At Strath Neighbourhood Centre we have strong connections with the senior community, but we would love to build stronger connections with the rest of the community.

Perhaps you know someone who needs friendship or support? Contact us on 0431 337044 or call in between 9.00 and 3.30 Monday to Friday.

## *Important dates in May, that may make May more enjoyable!*



shutterstock.com - 1720917838



*First Saturday in May is World Naked gardening Day!*

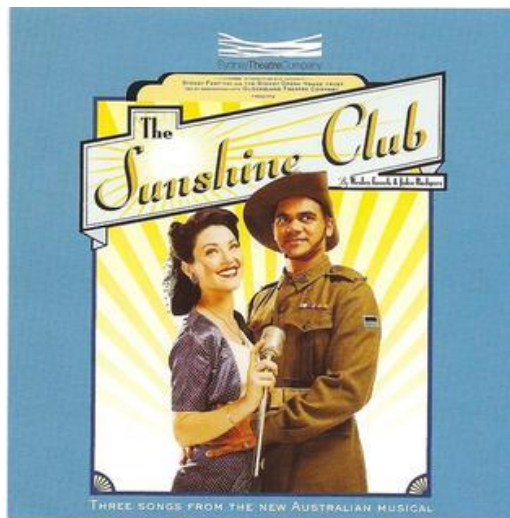
*May the Fourth be with you – Star Wars Day!*

*May 15<sup>th</sup> International Day of Families – Celebrate your family and its history.*

*May 20<sup>th</sup> World Bee Day!*

# Newsletter April May 2024

***The Sunshine Club*** is an Australian musical, with book and lyrics by Wesley Enoch and music by John Rodgers. The musical has been touring Australia, and on its recent journey to Goolwa, The Strath Neighbourhood Centre were privileged to have, at short notice, young up and coming performer Teyha Makani give us a wonderful talk about her life, and her family involvement with The Arts, from birth to now. Teyha performed a couple of songs from the musical and a couple of her own beautiful compositions. It was a privilege for us to see and hear this talented young woman and we thank her for giving her time to our community. If her hopes and dreams are fulfilled, we will be seeing her on screens in the future.



The Strath Neighbourhood Centre Inc held a Special General Meeting on Saturday 13<sup>th</sup> April at 9.30am.



There have been recent changes made by the Australian Tax Office (ATO) to the taxation for Not-For-Profit organisations.

As a result of this Strath Neighbourhood Centre may need to pay tax after July 1<sup>st</sup>, unless we become a charitable organisation.

Our advisor Cameron McRae, for Neighbourhood Houses, has suggested we make several minor changes/additions to our constitution/rules, to enable us to achieve charitable status.

Three amendments to the constitution were tabled and unanimously accepted by members present.

The constitution has been certified by Business affairs SA and is now on its way to the ATO.

# Newsletter April May 2024



Centre Volunteers Jane Crouch and Raye Goldfinch organized our tribute to Anzac Day with this display, baking Anzac Cookies and making sure our flag was flying on the day.



## Manager's Report

Hello Neighbours,

I am Malcolm Sutcliffe, the Centre Manager for SNC. My role is to provide support to our volunteer teams, and also direction and energy to grow the Centre.

SNC is targeting loneliness and social isolation. Our doors are open to all comers - as loneliness, and social isolation impacts on all levels of our community.

Without our volunteers, we would not open the doors, and each have specific roles in our day to day running. We have a newsletter editor, bookings officer, reception, building and grounds maintenance, kitchen helpers to name a few.

Being a small centre the manager's part seems as it should be an easy role, particularly with our volunteers putting in significant effort. I have administrative tasks to perform, webinars, workshops, and online meetings to attend.

Why? Because, it is about staying in front of happenings, changes in legislation, government policy and a whole range of other compliance needs. More importantly, I am here for our community, which includes our volunteers.

So, what is our reality? The reality of what we do at SNC, is much more than hall bookings, newsletters and the like, which are all important. Our focus is on supporting and bringing together our community members, many whom are at a moment of disadvantage, disengagement or just lost in their world. We are here to provide comfort, food, or just a quiet place to sit and regain some clarity, all done without judgement or discrimination.

What is your community support idea or activity? Are you able to help get it off the ground? Come and chat with us, nothing is too out there, well almost!

Cheers, Mal  
Centre Manager  
SNC

# Newsletter April May 2024



**Where?? Strath Neighbourhood Centre, 6 Parker Ave**

**When?? Saturday 25th May 6.30 for 7.00 pm start**

**Cost?? \$15 per head, maximum of 8 per table.**

**Theme?? Tables dress up as your favourite movie characters and other tables can guess what movie you are.**

**Silent auction.**

**Prizes and fun, BYO nibbles and drinks**

**This is a fundraising event for the Strath Neighbourhood Centre**

**Enquiries and bookings 0431 337 044, from 9.00 – 3.30**

# Newsletter April May 2024

6 Parker Ave  
Strathablyn SA 5255

Strath Neighbourhood Centre  
presents

## BINGO

Fun, Friends & Win Win Win  
Every Monday  
Open 1:00 pm  
Eyes down 1:30pm

\$5 for 12 games

no alcohol  
no cash prizes



*Join us weekly for  
fun and friendship  
with Monday  
bingo.*



### Bingo Trivia

Some very famous people started out as bingo callers..... Russell Crowe's career began in a bingo hall!

Data from the UK reveals that women called Margaret are the biggest winners in bingo, so don't let any Margarets in the door!

In Germany, bingo was used to teach children about numbers!

What do you call a senior who wins three bingo games in a row? A Jerry-Hat-Trick.

The game of bingo is believed to have originated in Italy in the 16th century where it was known as Il Giuoco del Lotto d'italia.

Bingo is often regarded as a social game, as players can interact with each other during breaks and share the excitement of winning.