

# Milang Community News

A journal of the Milang & District  
Community Association

Servicing the communities of Milang, Ashbourne,  
Clayton Bay, Finniss, Strathalbyn and Langhorne Creek



\$2.50

May 2023

*The Milang Community News is supporting your community.*

*Please support us by purchasing a copy.*



## FROM THE EDITOR

Welcome to the May 2023 edition of the Milang Community News.

What a busy month April was, we had the Milang Easter Fair which was very well attended despite the less than lovely weather. There was also the ANZAC Day service at the Milang ANZAC Park and we were blessed with the most perfect weather and as usual there was a lot of activity at the Already Read Books store at the Butter Factory. Work at the Butter Factory is coming along in leaps and bounds and JB (John Bradford) has provided us with a great update—please see page 30.

I know that I do go on a bit about the number of Volunteers who make these events happen and the countless hours that they put in, but in April it was quite outstanding. Volunteers are the only way MOSHCC can provide such events and I just want to say a HUGE thank you to everyone who volunteers.

In May there will be another fundraising concert 'The Sullivans' at the Institute on Saturday 13th May (see page 11 for further details) and it sounds like a fabulous show.

Finally to all of the mothers and pet mums, I hope that you have a lovely Mother's Day.

Have a great month...stay safe!!

**Cathy Fish**

Email: [editor@milang.org.au](mailto:editor@milang.org.au)

## Contributions to the Milang Community News

The Editor eagerly looks forward to receiving articles and welcomes suggestions from community members for stories and photographs.

Email: [editor@milang.org.au](mailto:editor@milang.org.au)

Mail: PO Box 416 MILANG SA 5256

Copy should reach the editor by **the 21<sup>st</sup> of each month** and must include the contributor's name, address and contact details. **Articles of fewer than 500 words are encouraged.**

Milang Community News reserves the right to refuse advertisements and other submissions. The editor reserves the right to change content for accuracy or where space is limited.

If you would like the Milang Community News photographer to attend an event to photograph subjects of local interest, please contact the Editor, Cathy Fish Phone: 0416 077 584 (leave a message) or Email: [editor@milang.org.au](mailto:editor@milang.org.au)

## ADVERTISING RATES

<b>Eighth page</b>	<b>\$19.00</b>
<b>Quarter page</b>	<b>\$35.00</b>
<b>Half page</b>	<b>\$60.00</b>
<b>Full page</b>	<b>\$105.00</b>
<b>Art work</b>	<b>\$40.00</b>
<b>Ad set up</b>	<b>\$35.00</b>

For all advertising contact

**John Whyte**

Email: [john.whyte.milang@gmail.com](mailto:john.whyte.milang@gmail.com)  
0431 601 850

## Where to buy the Milang Community News available at \$2.50 per copy

- Milang Mini Mart
- Milang Community Centre (MOSHCC)
- Milang Post Office
- Milang Bakery
- Port Milang Café
- Milang Caravan Park
- Strathalbyn Information Centre
- Strathalbyn News Agency
- Strath Chicken Shop
- Corner Bakery—Strathalbyn
- Finnis Café
- Langhorne Creek General Store
- Oasis Garden Function Centre

## DISCLAIMER

The Milang Community News is produced on behalf of the Milang and District Community Association Inc (MADCA).

The committee of the Association accepts no responsibility for damage of any form which may occur as a result of the contents of this publication.

The opinions expressed in the Milang Community News are not necessarily those of MADCA.

## May 20th—World Bee Day

The purpose of this international day is to acknowledge the role of bees and other pollinators for the ecosystem.



Front Cover - 'Everything that is Milang in a picture, almost'

Photo courtesy of Chris Reynolds

**Milang Community News is online**

Download a pdf version at <http://milang.org.au>

## Milang Easter Fair 2023

The Milang Easter Fair was a great success despite the weather being less than perfect. There were showers of rain and gusts of wind but all in all the weather 'behaved' itself and there were even some lovely bursts of sunshine.

The Easter Bunny was kept very busy greeting all of the children and handing out chocolate easter eggs. A BIG thank you to the Easter Bunny for visiting and making the fair so exciting for all of the many children who attended.

We had 75 stall holders booked this year which was fantastic and there was a great range of items for sale including 2<sup>nd</sup> hand goods, craft items, musical instruments, delicious food, books, makeup and much, much more.

The Milang Railway Station was also kept very busy serving delicious meals and taking people on free train rides.

These events certainly don't happen without the tireless assistance of the many volunteers involved and a HUGE thank you go to everyone who gave their time.

*Cathy Fish*





## Card Afternoons

This is an open invitation to anyone who may be interested in coming to our card afternoons every Tuesday at the Community Centre.

Time is from 1pm to 4 pm with a cuppa and cake included at a cost of \$2.50. The games played are Crib, Canasta and Jonola, but could include Euchre and Rummy.

Those wishing to learn will be given free tuition. Come along for a fun couple of hours.

For more information, phone Pauline on 0427 370 050.

## Calling all Knitters/Crocheters,

ex & wannabe

Knitters /Crocheters!!

Or



Anyone who would like to be part of the 'Just Yarning Group' group, please call Lyn on 0407 370 079.

We meet at 10.30 on Thursday mornings at the

*Milang Mini Mart Café and Providore*

to knit squares to be sewn together to make rugs that will be distributed locally to those in need.

Donations of 8ply wool would be greatly appreciated and can be left at (MOSHCC) Milang Community Centre.

If you are interested or have any queries,

Please contact Lyn - 0407 370 079



## Friday Feast in the

## Ace Space

Thanks to our marvelous volunteers

**Next feast—Friday 5th May**

**Please call 8537 0687 to book by the previous  
Wednesday**

**Cost \$9.00 for a 2 course meal**

## Tai Chi

**There's no Tai Chi in May** - Tai Chi resumes on 7th June.

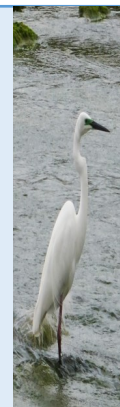
As the coolness comes we need to move and release tightness so that our joints keep mobile. Continue gently each day - start with your feet, ankles, knees, legs , hips , spine, neck, arms, fingers, head...

Gently loosen, lightly stretch, open and let the body relax.

The more we relax the more the systems in the body work well.

Remember to stop, loosen, breathe, create your own little movements to ward off tension and tightness.

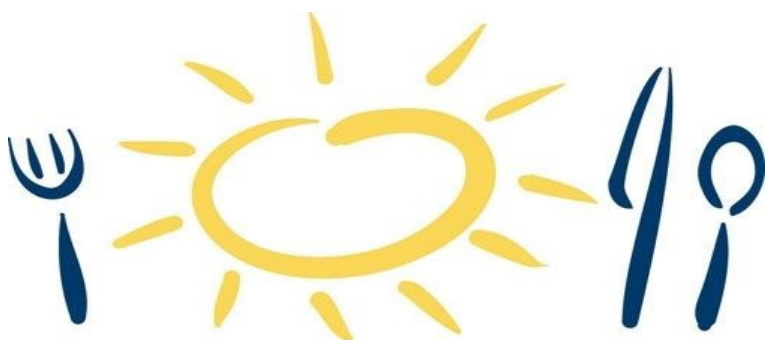
Classes resume Wednesday June 7th at 1pm in the Milang Institute supper room.



**Website of the Milang  
& District Community  
Association Inc.**

**We produce videos with voice overs to promote your business in our region. Call John today for a demonstration on how we can help you promote your business at an affordable price on 0431 601 850**

**Your local Community Centre working for your business. [www.youfindit.com.au](http://www.youfindit.com.au)**



# Meals on Wheels

*We deliver smiles<sup>sm</sup>*

**Please call 1800 854 453—for information on how to order**

1.  
You use me to cool your aching feet  
sun shines on your face and mine  
as you wonder at my majesty.

You use me to tell me your woes  
fling worries away into my flow  
your anguish becomes mine, drifting away.



You use me to raft my turbulent rapids  
sail my waters, swim my depths  
but beware my random currents' tow.

You use me to irrigate your fields  
nourish food crops, water livestock  
depend on my safe levels, strong flows.

You use me to boost industries' output  
by channelling my watercourse force  
aware my might is crucial, my value vital.

2.  
Rubbish gathers obstructing my flow.  
I'm a watery grave – torn baby buggies, old tyres  
cans, paper, plastic bags, and bottles choke me.  
You abuse me.

Dead fish bob in toxic scum  
rainbow oil and algal bloom float  
as dying grasses clog with debris.  
You abuse me.

Industrial waste spews fetid, lethal;  
news reports allege climate crime  
nothing changes except me.  
You abuse me.

You're dismayed when I flood  
as rain torrents plummet to earth  
bloating my depth, stretches my width.  
You abuse me.

You're distressed that I'm dry  
when rain fails to fall  
shrinking me to dusty puddles.  
You abuse me.

3.  
Can't you see the worth in me?  
I'm not precious metal  
nor colourful stone  
I am Life. Your life.

**Mother**

**Amanda Solly**

The wind can howl  
and hearts can break  
and dreams lie lost and shattered.

And fate can tear itself away with  
all else that has mattered.

Our paths can change direction  
and twist upon each other  
but none of this is cause for fear  
for I can call my mother.

Getting better is to commit,  
It's important to have some wit.  
Recovery is hard and hurts,  
lying below rock bottom is worse.

Life has turned out rather badly,  
innate thinking, to addiction.  
Little will change without action.  
You will procrastinate to cope.

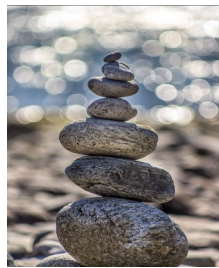
The fix looks simple to the others.  
Interrupted she stays focused,  
majestically ready to strike, the  
emerging demons of her fright.

Addiction does not help with life,  
it won't give up, but I hope you do.  
You are special and this is for you,  
you are capable of great things.

Make a change for a better life,  
Lily did.



**Poets are encouraged to  
submit their poems for Poets Corner to:**



## 'Stepping On'

Keep Active ... Stay Strong

Strength and Balance

Tuesdays from 10—11am at  
The ACE SPACE at the MOSHCC

A weekly one-hour exercise class using gentle and controlled movements to improve strength, balance, flexibility and coordination in a fun and supportive environment.

Small group, suitable for all abilities, (priority given to CHSP clients), EMAA (Easy Moves for Active Ageing) Trained Instructor.

Good balance is needed to keep us moving about confidently and safely.

Please speak to Sue at the Milang Community Centre

Phone: 8537 0687

Cost: Gold Coin Donation



## MILANG MERMAIDS WOMEN SUPPORTING WOMEN

On our journey as women we are often called upon to support others.  
This group will endeavor to support you.

As women we learn so much from all generations and there is always so much more to learn. Within this group we provide a safe place where we can share and care for each other along this journey called life.

### CONTACT DETAILS

Colleen on 0499 373 148

colleen@growinglifeconnections.com.au

May meetings:  
2nd, 16th & 30th

Please contact Colleen if you are interested in attending



## Toe Nail Cutting & Grooming



Are you finding it hard to cut your own toe-nails??

Let us help!!

Our Enrolled Nurse Valerie is willing to assist.

All you do is make a booking on 85370687, we will have a list of dates and times available.

So just register, the fee will be \$10.00 and you will need to bring along a small hand towel.

## Over 50's Keep Fit Class

Milang Institute Hall

Thursday 10am-11am

All Welcome

For info call MOSHCC 8537 0687



*We won't let our body succumb to old age.*

*Therefore, we try to prevent that by strength and stretch movements (and laughs and giggles)*

*Every Thursday between 10 and 11 o'clock.*

*So do your body a favour and join us.*



## Milang Playgroup are looking for 'Dress Up' costumes.

If you have any costumes your kids or grandkids have grown out of, we would love to take them off your hands.

Please drop off at the Milang Campus front office.

# ANZAC Day Service at ANZAC Park Milang 25th April 2023

This years service was well attended by about 100 people at the 11am Service presided over by Rev Alex Stone.

John Whyte gave an opening address and thanked all the marvellous volunteers who set up the flags, chairs and PA system etc.

The Strathalbyn Concert Band accompanied the Hymn singing and played the Last Post. We had a Scotch Piper from Point Sturt who played the pipes during the wreath laying .

Wreaths were laid for each of the Australian conflicts and Wars from the Boar War through to our present day. Other wreaths were laid from Rebekha Sharkie MP our local federal member David Basham MP member for Finnis State member and Alexandrina Council.

The Milang Mens Shed provided a sausage sizzle for guests and the ladies of MADCA provide scones with jam and cream and Anzac Biscuits.

We were blessed with a great sunny day.

*John Whyte*



## Anzac Day 2023 – A BIG thank you!

What a glorious day we had, sun shining, birds singing with the Anzac Park full of people coming together to honour our ANZAC's.

I wish to thank all the Volunteers, John Whyte MC, Alex Stone for conducting the service, Ray Perry & John Bradford for setting up and packing up afterwards along with Norm Foster.

We had the lovely ladies working in the Institute kitchen making scones and setting up for morning tea – Lorraine Footer, Lyn Unwin, Penny Perry, Jean McCormick (*scones were delicious*). Margurete Loveridge-Aistrope and Glenis Foster also assisted with the clean-up after the event.

The Men's Shed put on the sausage sizzle for the day as they do every year which is awesome and everyone enjoyed gathering on such a beautiful day.

Thanks again to the Strathalbyn Concert Band, our beautiful singer Jessica Michelmore who sang the Australian & NZ National Anthems.

*Annie Whyte*



# TRIVIA



Answers Page 35

By Jude Aquilina

1. What is the drink portagaff made from?
2. The song *Get me to the Church on Time* is from which musical?
3. Name the oldest country town in South Australia
4. What is Dutch courage?
5. Which mammal has the most teeth?
6. In which Australian city is Circular Quay?
7. Name the Aboriginal people who traditionally owned the Adelaide Plains
8. What is otitis?
9. Who wrote the song Hallelujah?
10. What is the deadliest creature on earth?

## WOW WONDERFUL WOMEN'S GROUP



The next In-House meeting will be:

**Wednesday 24th May 2023**

We will be having a **Scrapbooking** session with Annie.

Contact Reception at MOSHCC on 8537 0687 for bookings or email [lakeshomecare@moshcc.com.au](mailto:lakeshomecare@moshcc.com.au)

## Alcoholics Anonymous

Alcoholics Anonymous is a fellowship of men and women who share their experience, strength and hope with each other that they may solve their common problem and help others to recover from alcoholism.

Meetings every Sunday at 5pm  
Reg Sissons Day Care Centre, High St Strathalbyn  
Contact 24 hours (08) 8221 6999



## May 2023

- |                  |  |
|------------------|--|
| 1 <sup>st</sup>  | Kiana Falzon                                       |
| 6 <sup>th</sup>  | Patrick Jones                                      |
| 7 <sup>th</sup>  | Stuart Jones                                       |
| 8 <sup>th</sup>  | Dianne Hopgood<br>Robert Rodgers                   |
| 11 <sup>th</sup> | Julie Schmoock<br>Ros Fergusen<br>Cheyanne Dolling |
| 13 <sup>th</sup> | Carmel O'Driscoll                                  |
| 16 <sup>th</sup> | Phillip Rodgers<br>Kate Smith                      |
| 19 <sup>th</sup> | Eliza Fergusen                                     |
| 31 <sup>st</sup> | Troy Blackwell                                     |



# Happy Anniversary!

- |                  |                              |
|------------------|------------------------------|
| 1 <sup>st</sup>  | Asha & Stuart Jones          |
| 4 <sup>th</sup>  | Christine & Phil Smith       |
| 11 <sup>th</sup> | Barbara & Peter<br>MacGregor |
| 16 <sup>th</sup> | Karyn & John Bradford        |
| 21 <sup>st</sup> | Carmel & Leon O'Driscoll     |

## Justices of the Peace

Please ring for an appointment

**Mr L.F. O'Driscoll 8537 0051**

**Karyn Bradford 8537 0067**





## From the President

MADCA has had an extremely busy time during April, with the Easter Fair and Anzac Day. Restoration of our Butter Factory is moving at a fast rate with very challenging times to line up trades people so they can follow one trade after the other.

It is also coming to the end of the financial year and we will have a couple of vacancies for management board members. In particular we would welcome people who have some management experience, people who can think outside of the square and people who have experience in hospitality and tourism. I am happy to discuss Management Board positions with interested people.

Our Lakes Home Care division is still expanding and their management team are working hard to attract new staff members in order to support its growth over recent times.

Our Youth Hub is now running on a weekly basis. Unfortunately their Kayaking Day scheduled for the 15th of April was cancelled due to strong winds and rain. Our Youth Leader Lyal is now planning a new date and we are also looking at some sailing training in the future.

I am very happy with what we have achieved so far and we are now looking at attracting some funding to restore the youth hub and also seeking suitable youth volunteers to assist our Youth Leader. Please see the advertisement on page 10 and contact the Volunteer Coordinator for further details.

*John Whyte*

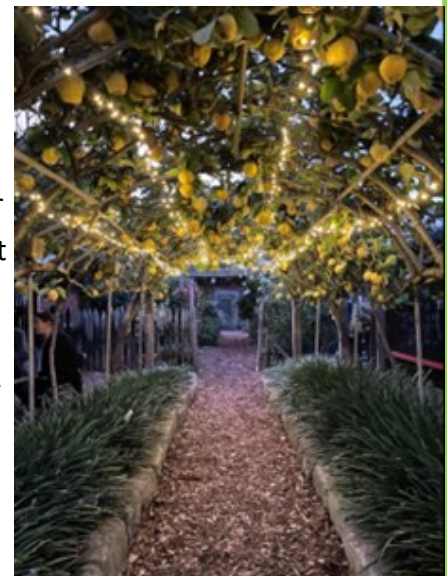
## OPEN GARDEN

As part of the Open Gardens South Australia, OGSA, we opened our garden, Marchismick at 33 Stirling St, Milang. This was our second year to partake in this programme. This year the weather wasn't on our side, the Easter weekend was cool with the occasional squall. It seems that people who visit gardens pay scant attention to the weather. At 10am, when we opened, there was a sizeable number of people queuing up to enter, dressed to withstand the wintry weather. And so it continued throughout the weekend, 800 visitors over the two days.



There are fundamentally three things that make an open garden a success. There is of course the garden, then there is the army of volunteers which we are very grateful for and lastly, and possibly most importantly, are the visitors that pay to visit the garden. Thankyou to those of you who visited.

The primary purpose of opening our garden is to raise funds for charity. The cooler weather worked in our favour, in so much that the 'cafe' was crazily busy on both days, hence the takings over the weekend exceeded our expectations.



I am very happy to report that \$3100 has been donated to The Fred Hollows Foundation and \$3000 to Medicins sans Frontiers,MSF.

*Roberta Swinbank*

# VOLUNTEERS NEEDED

We need volunteers to help out with social, recreation and sports activities for young people in Milang and surrounds



Would you, or someone you know, like to:

- Make a difference to young people in your community
- Volunteer in a fun, friendly and well-supported environment
- Gain skills and experience relevant to sport and recreation, community, or youth services
- Flexible roster.

This is an exciting opportunity to support a local youth program co-funded by Milang and District Community Association, Reclink Australia, Alexandrina Council and the Alcohol and Drug Foundation. Young people encouraged to apply.

For more info or to apply, contact MOSHCC on 8537 0687 or visit [moshcc.com.au/2023/01/10/youth-volunteers](https://moshcc.com.au/2023/01/10/youth-volunteers)



MILANG & DISTRICT COMMUNITY ASSOCIATION INC.

# THE SULLI-VANS



AS SEEN  
ON THE  
VOICE!

200  
AUSTRALIAN  
SHOWS

KEVIN SULLIVAN

DON'T MISS A SHOW AUSTRALIA IS TALKING ABOUT  
WITH THE SULLI-VANS HARMONIC VOICES

MILANG COMMUNITY HALL

SATURDAY 13 MAY 2023

\$25 PP - BBQ AT 11.30 - SHOW AT 1PM

BOOKINGS - GLEN 0401 638 464 / NORM 0428 222 942

Butter Factory Fundraising  
Concert on Saturday 13<sup>th</sup> May at  
the Milang Institute.

BBQ at 11.30 with the show  
at 1pm.

We are proud to bring a new  
family band to Milang. Kevin and  
his three children known as 'The  
Sullivans' are very much in  
demand with over 200 shows  
around Australia and we are really  
lucky to have them.

Thanks to Betty at the Caravan  
Park for sponsoring their  
accommodation.

Bookings are going strong with 90  
tickets already sold, so book your  
seat and do not miss the show.

Thanks for your continued  
support.

Glen 0401 638 464

Norm 0428 222 942

## Whisky Jack @ The Milang Bowling Club

Friday 24<sup>th</sup> March, the Milang Bowling Club rocked to the talented band 'Whisky Jack'.

Although very loud, once we took our hearing aids out it was better. I did hear that a couple on Cox Street enjoyed the music sitting on their front verandah.

The band turned back the clock with classics from the 60's, 70's and 80's, Johnny Cash, The Proclaimers, Neil Diamond, The Shadows to name a few, brilliant guitar picking. I also learned the chorus to a couple of new songs.

Ten minutes of continuous Nutbush City Limits was enough to test all the hip and knee replacements, we all managed to walk off the floor without any problems.

Everyone knows my genre is Country Music, but I really enjoyed this show and can't wait till the next show, so spread the word around.

Thanks to Paul and his crew for a great night of entertainment.

*Norm*

the power of humanity



# Red Cross News

## April 2023

The opening times for The Cheer Up Hut when our Flag is flying: -

**Wednesday and Saturday**

**9am until Midday**

We have a large array of Men's, Women's and Children's clothes, Bedlinen, Children's Books and Assorted Toys, all are welcome to come and browse.

If anyone in need of clothing at any time, please Contact Bec on 0402244804 or Tracy on 0417299391. Discretion is assured.

The small stall by the oval entrance has a selection of Books, DVD's, Plants & Toys etc. A donation Box is available at the stall.

We would love to have more volunteers. If interested, please Contact Bec or Tracy on the above No's.

**Doris Lambert**

**Publicity Officer**

# EARTH WIND & FIBRE FAIR



**JUNE 10 & 11 (Sat & Sun) 10am to 4pm**

**Milang Institute**

cnr Coxe Street and Ameroo Ave Milang SA



### THINGS TO SEE

### THINGS TO DO

weaving . rag rugs . rug makers . knitters . crafts  
peg weaving . beanie exhibition . spinning . fleece sales  
homespun wool . glasswork . felting . beading . needle  
felting . equipment for sale . Ngarrindjeri weaving and  
arts . beading . demonstrations and more.....

Light lunch and refreshments available  
catered by Karyn Bradford, Artisans at Heart  
(GF, DF and Veg options available)

Hosted by Milang Fibre Art Group Contact Robyn 0431072195

## ALREADY READ BOOKS

### Milang Lakeside Butter Factory

Open Dates:

#### MAY

Saturday 6 <sup>th</sup>	10am to 3pm
Sunday 7 <sup>th</sup>	10am to 3pm
Saturday 20 <sup>th</sup>	10am to 3pm
Sunday 21 <sup>st</sup>	10am to 3pm



Noooooooooooooo!  
I finished it by accident.  
I was tricked!  
The last ten pages  
were a book club  
guide and  
acknowledgements.



# Ngarrindjeri Culture & Weaving Workshops 10-4pm

**WITH CEDRIC VARCOE**

**MAY 20 - WEAVING WORKSHOP AT MILANG OLD SCHOOL HOUSE COMMUNITY CENTRE**  
**JUNE 10 - NGARTJI (TOTEM) WORKSHOP - MILANG INSTITUTE AS PART OF THE EARTH WIND AND FIBRE FAIR USING RAFIA, WIRE AND PLANT MATERIALS - TO CONSTRUCT A TOTEM AT MILANG OLD SCHOOL HOUSE COMMUNITY CENTRE**  
**JULY 21 - WEAVING WORKSHOP AT MILANG OLD SCHOOL HOUSE COMMUNITY CENTRE**



Bookings call or text 0412036900 email [artisansatheart@bigpond.com](mailto:artisansatheart@bigpond.com)

# ALREADY READ BOOKS—April 2023



A very busy day on Easter Saturday at Already Read Books when at times there was standing room only and ARR volunteers were kept on their toes greeting and assisting visitors.

Below, **Emme and Harri**, visiting from **Maslins Beach** found a nook in the kids corner and some fun games and books.



Below...At the end of the day, a very satisfied ARR crew with help from Volunteers from the Butter Factory (JB & Norm) who assisted with providing information on the restoration to many interested visitors.



**Ross** told us he would be 4 years old the next day, (Monday) and was happy to roll around on our newly donated mat in the kids corner. Ross and his mum left with a couple of treasures they had discovered and donated too.

It wasn't all work at ARR Books, on Monday there was time out to have a lovely 'Sunday' lunch in the back 'room' shared with **Pauline** who celebrated her 92<sup>nd</sup> birthday last month.



**Councillor Michael Scott ASM OAM** called in, checked out, and was very impressed with the progress of the Butter Factory restoration. He also left with a good book and a vow to return. *Thank you.*

Another great weekend where our very generous visitors donated \$600 to the Butter Factory Restoration Fund. **Thanks to everyone for their part in our very successful weekend.** JM

# My Favourite Recipes

Cathy Fish

Many years ago (back in the 80's) I used to live in Queensland and like every good Queenslander I had a copy of Lady Flo Bjelke-Peterson's Cookbook . What I loved about Flo's cookbook is that everything worked and was written in lovely straight forward terms.

One of my favourite recipes and one that Flo was iconic for was her Pumpkin Scones. So I thought I would give everyone the recipe.

## Flo's Pumpkin Scones

### Ingredients:

- 1 Tablespoon butter
- 1/2 Cup sugar
- 1/4 Teaspoon salt
- 1 egg
- 1 Cup mashed pumpkin (cold)
- 2 Cups self-raising flour



### Method:

- Beat together butter, sugar and salt with electric mixer till light and fluffy.
- Add egg, then pumpkin and stir in the flour.
- Turn dough onto a floured board and cut into circles.
- Place on a tray on the top shelf of a very hot oven (225-250c) for 15-20 minutes.
- Remove from oven, allow to cool and serve with butter.

### Top Tips:

- Be careful not to overwork the scone dough to ensure they're light and fluffy.
- If possible use Queensland Blue Pumpkins to add moisture and colour to the scones.



## Rainfall for April 2023



Saturday	8th	1.5
Sunday	9th	3
Monday	10th	0.5
Wednesday	12th	2.5
Saturday	15th	1.5
Sunday	16th	6.5
Wednesday	19th	1.5
Thursday	27th	8
Friday	28th	1
Saturday	29th	1
<b>April 2023 Total</b>		<b>27</b>

*Rainfall figures kindly supplied by Ray Perry*

## MOSHCC is seeking Volunteers

Do you have you some spare time on your hands ?



Would you like to assist in one of our many community projects?

In particular we are currently looking for people who would like to work in Reception and also we are in need of people who would like to drive clients to and from appointments (vehicles are provided).

You will find a very friendly bunch of people and make new friends very quickly. You will find it very rewarding to be involved with such a great group of people.

Call MOSHCC on 8537 0687 and ask for Vivienne

## Cold Weather Yarning



The Yarning Group recently gathered together **7** blankets, **3** scarves, **2** pairs of fingerless gloves, and **7** beanies which they donated to Connecting the Dots clients via Colleen White, Coordinator of Growing Life Connections.

Colleen was delighted with the donations and had people already in mind who would benefit greatly and appreciate the colourful, warm accessories. With the chilly mornings and evenings, we've been experiencing lately, I'm sure they'll be put to good use immediately.

These donations can only happen with the amazing generosity of local and not so local community members. Our cupboard is not bare, but we are all knitting furiously to stock up for the coming Winter.

If you are interested in knitting squares at home, we use 4mm needles and 8 ply (or as near as possible) square size is 25cm x 25cm or approx.. anything between 48 stitches and 52 stitches depending on whether you are a tight knitter or a loose knitter. You can drop off your squares on Thursday mornings at the Milang General store, or ring Lyn on the number below.

If you or someone you know could use a warm cuddly blanket, scarf, beanie or fingerless gloves, let Colleen at MOSHCC 85370687 or Lyn on 0407 370 079 know, and we'll get **Yarning**.....

## ANZAC DAY

LEST WE FORGET THE ANIMALS THAT ALSO SERVED


*Remembering the faithful animals & birds that served during*

*W.W.I & W.W.II*



In last month's issue of the Community News, Just Yarning mentioned a small project they had undertaken of making a purple poppies wreath to commemorate the animals that also served in the wars.

Lorraine finished the endless task of wiring the many knitted and crocheted poppies to the wreath, she has done a brilliant job and we are proud of it!!

Lyn Unwin laid the wreath on Anzac Day at the Soldiers Memorial Gardens on the 25<sup>th</sup> so we hope you took the opportunity to 'pop' down to the service and admire it after the ceremony. 



# Flows critical to Lower Lakes ecology

Recent floodwaters have highlighted why end-of-system flows are critical for the ecology of the Coorong, Lower Lakes and Murray Mouth.

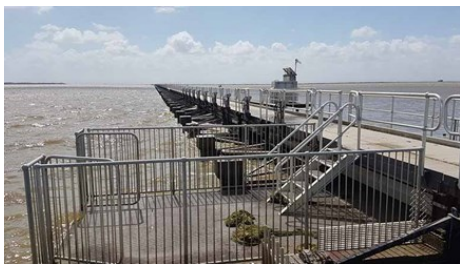
The floodwaters that have moved through the River Murray in recent months have highlighted the importance of end-of-system flows for the ecology of South Australia's Coorong, Lower Lakes and Murray Mouth (CLLMM) region.

The floods saw the barrages in the Goolwa and Hindmarsh Island region fully opened in December 2022 to enable floodwaters to pass into the Coorong and to the ocean.

Constructed in the 1940s, the 5 barrages near the Murray Mouth at Goolwa, Mundoo, Boundary Creek, Ewe Island and Tauwitchere are used to control the flow of river water through the lake system and stop highly saline water from flowing upstream into the lakes.

December was the first time in decades that all barrage gates were open, and visitors flocked to the barrages and Murray Mouth lookout to see the flood flows as they passed.

In recent years, water for the environment has played an important role in maintaining flows during dry times to the Lakes and Coorong. Flood flows, on a much bigger scale, deliver environmental benefits to the region.



*Tauwitchere barrage vertical slot fishway, Lower Lakes, South Australia*

Jarrold Eaton, MDBA Assistant Director, Water Quality and Salinity, recently visited the CLLMM region with other MDBA colleagues to see first-hand the impact of the flood event and hear from local community members.

*“One of the key messages we received was how water for the environment has been supporting the gradual recovery of the CLLMM region. This water was recovered under the Basin Plan for exactly this job, and to support the health of the whole river system.*

*Fish also appear to be benefiting from the abundance of food due to the floods. To quote a commercial fisherman from Meningie, some fish species are in the best condition seen in a long time, with much higher fillet weight compared to low flow years such as 2018.”*

Jarrold said water for the environment in previous years and the recent flooding have also helped to significantly reduce the level of salt in the Lower Lakes.

*“If we look back to the Millennium drought at the end of the 2000s, there were elevated salinity levels in the north and south lagoons of the Coorong. The south lagoon was suffering from hyper-marine conditions, with salinity levels at some locations as high as 180,000 EC (electrical conductivity) units, which is more than 3 times saltier than seawater.”*

According to South Australia's Department for Environment and Water, the ecological salinity threshold for the Coorong north lagoon is up to 53,000 EC in wet years (around seawater) and 66,000 EC in dry years. In the south lagoon the threshold is up to 85,000 EC to 130,000 EC depending on climatic conditions.

*“The high end-of-system flows has flushed salt from the River Murray system into the ocean and significantly improve salinity levels in the Coorong.*

*Salinity levels have been much lower in 2022–23 and next year the further delivery of water for the environment will be important to maximise the water quality and salinity benefits observed in 2022–23.”*



*Driving between the Tauwitchere and Ewe Island barrages, Coorong/Lower Lakes, South Australia*



The Murray Mouth has also been a significant beneficiary of the floodwaters.

*"There has been major scouring of the mouth during 2022–23, which means it is currently much wider and deeper than before the floods. Consequently, a lot of sand has been scoured without mechanical intervention by dredging."*

While the recent floodwaters have delivered benefits, there can be some negative environmental impacts because of increased discharge. Elevated flows have led to a strong response from ruppia (aquatic plants), but they also limit foraging habitat for migratory birds as regular feeding areas have been inundated.

*"With around 33 GL of water a day in early March flowing across the South Australian border and continuing healthy flows along the river in South Australia, the good news is that we will continue to see the connectivity between the river, Lower Lakes, Coorong and the Murray Mouth for some time to come."*



Two large fur seals resting on a metal barrage access ramp, Lower Lakes, South Australia.

(Information sourced from the Murray Darling Basin Authority website)



## Finance Officer

- Part Time (.6FTE)

We are seeking a Finance Officer to join our team at the Milang Old School House Community Centre.

The Finance Officer will be responsible for providing financial management and accounting services to the centre, ensuring compliance with relevant financial regulations and policies. The ideal candidate will have demonstrated finance experience, strong analytical and problem-solving skills, and excellent communication and interpersonal skills.

For further details and how to apply please see [www.moshcc.com.au](http://www.moshcc.com.au)

Enquiries can be directed to Stuart Jones, Manager.

[stuart@moshcc.com.au](mailto:stuart@moshcc.com.au)

Phone: 08 85370687

**Applications close 5pm Friday 12th May 2023**



**Volunteer Phone**

**Canvasser**

**Required**

A person who enjoys speaking to people is required to call prospective businesses and then email an information kit to them.

This could lead to a future sales position working for a community organisation.

Call John Whyte for further information.

0431 601 850



## FEDERAL GOVERNMENT NEEDS TO URGENTLY OPERATE ON MAYO MEDICARE BULK-BILLING

- VISITING THE DOCTOR IN MAYO HAS BECOME A LUXURY FEW CAN AFFORD
- PATIENTS IN MAYO PAY NEARLY \$40.00 OUT OF POCKET FOR A STANDARD GP CONSULTATION
- NO GP CLINICS SURVEYED IN MAYO OFFERING BULK BILLING
- FEDERAL GOVERNMENT NEEDS TO URGENTLY ADDRESS PRIMARY HEALTH CARE CRISIS

Attending the Doctor in the Federal Seat of Mayo has become a luxury, as a survey of 38 GP clinics in the *Cleanbill Health of the Nation Report* found **NOT A SINGLE CLINIC BULK-BILLED PATIENTS.**

Mayo was one of a handful of clinics nationally that did not have any evidence of bulk-billing when surveyed, and one of the State's highest average standard consult fee of nearly \$80.00 and patient out of pocket expenses at nearly \$40 (\$39.41) for a standard consult.

This data comes as no surprise to Federal Member for Mayo, Rebekha Sharkie MP who has for months advocated to the Federal Health Minister Mark Butler MP, and more recently Treasurer Jim Chalmers, MP for a solution.

### QUOTES ATTRIBUTED TO REBKEHA SHARKIE MP:

"I am not surprised by this data, I have been hearing anecdotally from constituents that Doctors across our region have stopped bulk-billing everyone, even patients who hold a Commonwealth Health Care cards."

"Constituents are either foregoing visits to their doctor, missing medications as they can't afford to get their

script renewed, or joining the waiting room in EDs, which is putting more pressure on our hospitals."

"In June last year I wrote to Minister Butler about this issue, and then in August met with the Minister to discuss the need for increased incentives for rural GPs to bulk bill, particularly young families and Health Care card or Pensioners/Seniors Health Care card holders."

"I have asked questions in Question Time, I have also written to the Treasurer asking him to make access to affordable health care the Government's first priority in next month's Federal Budget. We can't have a situation where people sick or not taking medications because they can't afford the doctor."

"The Government states they have invested \$750M into the *Strengthening Medicare Fund*, but in Mayo we are not seeing any benefit of this fund on the ground."

"In the last six months bulk-billing rates have declined rapidly and what we see from the data is you need at least \$80.00 in your bank account to visit the doctor, and too many people in our community just don't have this money to hand."

"With fewer medical graduates taking a GP pathway, we also need to explore other health care options, such as pharmacists taking on more of a role in helping people manage their medicines and explore whether pharmacists could consult with a patient to extend a script for some medications."

"For Mayo this problem is particularly acute, we are the oldest electorate by median age in South Australia and one of the oldest in the nation. The Medicare system was designed to ensure Australians had access to health care irrespective of their bank balance, I believe we are seeing that system rapidly fall apart."

Media Enquires: Rebekha Sharkie MP 0403731676

[Rebekha.Sharkie.MP@aph.gov.au](mailto:Rebekha.Sharkie.MP@aph.gov.au)

## Frequently asked questions

### What changes are being made?

In the first week of July, all households across our mainland councils of Alexandrina, City of Victor Harbor and DC Yankalilla will have their Blue General waste bin collected on its own, even if you are due for a Recycling collection.

The Recycling bin (yellow lid) and Green organics bin will be collected together in the second week of July.

### Will all waste bins still be collected fortnightly?

Yes, all waste streams continue to be collected fortnightly on this cycle until the summer recycling collection program when Recycling and Green bins are collected weekly for 6 weeks.

### Are Exceptional Circumstances bins also collected with blue general waste bins?

Yes, red lid exceptional circumstances bins that are annually approved for renewal from July will continue to be collected when the blue general waste bins are collected.

### Why are changes being made?

Our region has seen significant population growth as well as an increase in green organics (food and garden) collections, which have driven the changes to ensure FRWA can continue to deliver the most efficient and effective regional waste services to residents on behalf of its member councils.

The collection schedule also simplifies the collection across the Fleurieu Peninsula

### How will these changes affect my household?

All households will wait an extra week for either their recycling or green bin to be emptied.

If your last collection in June is a Blue General waste bin and Green bin, you will receive two blue general waste collections in a row (last week of June AND first week of July) and then wait an extra week for your recycling collection with your green bin (in the second week of

# YOUR BIN COLLECTION SCHEDULE IS CHANGING FROM 1 JULY 2023

## FIRST WEEK OF JULY

**BLUE GENERAL WASTE** bin collected for everyone



## SECOND WEEK OF JULY

**YELLOW RECYCLING** bin  
**GREEN ORGANICS** bin collected together



July).

OR

If your last collection in June is a Recycling bin collection, you will wait an extra week for your Green bin to be collected (in the second week of July, together with your recycling bin)

### Will my collection day change?

There are some areas who will also have a collection day change. Please make sure you check your new council kerbside collection calendars here. Please note that the address bar will not reflect your change in collections until the change occurs in July, so please use the full council calendars available here.

Will there be additional facilities or services provided to accommodate the changes in kerbside collections?

There are no extra collections scheduled for the change at this stage and all residents will wait an extra week for either their recycling or green bin collections. We understand that this may be inconvenient for some who may need to keep aside some recyclable materials until the next collection, however we believe most residents will have the bin capacity to absorb this once off wait in collection.

*Information sourced from the Fleurieu Regional Waste Authority*



## Milang Cottage Garden Club monthly outing report

Hi fellow Garden Lover's

Where has April gone, where has the year gone, it is hard to believe that we are almost in May and the nights are drawing in and the weather is getting cooler although it was not that hot this past summer.

The trip on the 12<sup>th</sup> April to the Adelaide Hills was a mixed day with lots of laughs and mishaps. The first mishap happened at Tupelo when one of our members thought she would take a short cut between the rows of plants only to find a step which was a little higher than expected and then she found herself on the floor when one foot tripped on the step.

The second was while having lunch in Belair National Park another member accidentally set off his new person alarm and had panic stations while remembering how to turn it off. While having lunch we had a visit from a pair of Emus who gave us plenty of room even though we were in their area.



Many plants mainly native ones at this time of the year were loaded into the bus at the three nurseries visited. We came home via Finniss stopping there for Marie's birthday celebrations and the drawing of the raffle which was won by Marie, the second time this year that the birthday person has won the raffle.

The next trip will be on the 10th May to McLaren Vale visiting Hills Herbs, Native Nursery and other nurseries in McLaren Vale before visiting two nurseries in Willunga.

MOSHCC has put the bus fare up which was to be expected give the price of petrol, it is now \$15.00 each. So, you will need this as well as an item for the raffle box, your lunch and a drink. If you wish to join us please let me know on 85370453.

Thank you and good gardening.

Anne Feast



## Milang & Langhorne Creek

### R-6 Campuses

**Our Playgroups cater to families with children from birth to 5 years. Attendance is FREE.**

**Milang Playgroup is run every Tuesday morning during the school term from 9-11am.**

**Langhorne Creek Playgroup is run every Friday morning during the school term from 9-11am.**

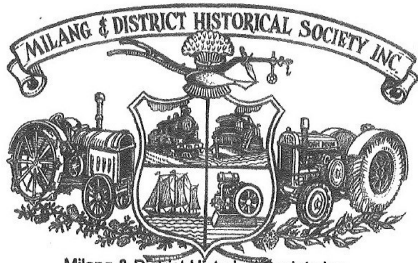
#### Milang Campus:

**Head of Campus—Susannah Cook  
(08) 8537 0223**

#### Langhorne Creek Campus:

**Head of Campus—Les Cameron  
(08) 8537 3145**





Milang & District Historical Society Inc  
P.O. Box 297, Milang, S.A. 5256

(Including the Port Milang Museum, Lakeside Men's Shed &  
the South Australian Fire Fighting Vehicles & Equipment Museum)

The Milang and District Historical Society's Museum at the Milang Oval grounds will be holding an Open Day on Sunday 7th May from 10.00am to 4.00 p.m. as part of S.A. History month.

Mayor Keith Parkes and wife Tracy will be unveiling a Mural titled "Shearing the Sheep" by Well known Artist, Chad Spencer. The unveiling will be at 10.30 a.m. Morning tea and light refreshments will be available all day.

Entry is free and we invite all Members of the Community to attend our unveiling.

*Milang & District Historical Society Inc.*

Milang Museum Open Day  
As part of S.A. History month

Unveiling of "Shearing the Sheep" Mural by well known  
Artist, Chad Spencer.



Photo by Andrea Lufftast on Unsplash

On Sunday 7th May, 2023, 10.00 a.m.—4.00 p.m.

Unveiling at 10.30 a.m.

Milang Oval grounds, Milang.

Free Entry, Donations welcome.

Morning Tea & Light Refreshments

Available all day.

Raffle drawn at 3.00 p.m.

Enquiries :- Allan McInnes

Contact 0437800811.



*Photo courtesy of Christine Danton*



## WHY MENTAL HEALTH FIRST AID?

### MENTAL HEALTH FIRST AID (MHFA) TRAINING

#### REALLY MAKES A DIFFERENCE

Approximately 20% of Australian adults experience a common mental illness each year. Completing a MHFA Course will help you to develop the skills to support a friend, family member or co-worker.

Having mental health first aid skills means that you can assist someone developing a mental health problem or experiencing a mental health crisis and make a real difference to your community.

MHFA courses are based on evidence of what is best practice mental health first aid to support someone who has a mental health problem or is experiencing a mental health crisis.

#### RESEARCH HAS SHOWN THAT MHFA TRAINING IS ASSOCIATED WITH:

- ◇ KNOWLEDGE  
Improved knowledge of mental illnesses, their treatments and appropriate first aid strategies.
- ◇ CONFIDENCE  
Confidence in providing first aid to a person experiencing a mental health problem.
- ◇ DE-STIGMATISING  
Decreases in stigmatising attitudes.
- ◇ INCREASED SUPPORT  
Increases in the amount and type of support provided to others.

MOSHCC will be offering MHFA to anyone in the community that would like to do it in the near future. Keep an eye on our newsletter and Facebook pages.

Contact Vivienne at MOSHCC for further details  
PH: (08) 8537 0687  
MOBILE: 0483 897 220  
vivienne@growinglifeconnections.com.au



# WHAT IS A MENTAL HEALTH TOOLBOX

By Vivienne Maher

I first became familiar with a Toolbox when I was diagnosed with a Mental Illness, and I began my journey to recovery.

A mental health toolbox is where you keep everything you need to take care of your mental health. It holds your tools to improving your day. Some days you may need more than one tool from your toolbox and some days it may only take one thing. You may not find complete relief, but your tools will help you feel a little bit better and more in control of your life. The point is that you have a box of tools that you can turn to when things feel off.

Here is a list of some tools that I have in my Toolbox...

- **Reaching out for help.** I can see my psychologist, attend a support group that I am a part of, or I can call a friend.
- **Engage in Self Care.** Self-care is different for everyone, but for me it might be taking a hot bath, getting a manicure or a massage.
- **Good Sleep Habits.** I make sure I get enough sleep which might include having the occasional nap. Sometimes if I am struggling with my sleep I will listen to guided meditation as I'm falling asleep.
- **Physical activity.** Exercising, such as walking, lifting weights, meditation, stretching, going to the gym or a dance class.
- **Engage in hobbies.** writing, reading, listening to an audio book, doing crossword puzzles, cooking, playing a game on my phone, gardening.
- **Using your senses.** I often light a scented candle, spray my favourite perfume, put scented oils in my diffuser. I also have wrist bands made from different textures (Silk, braided rope, glass beads etc) that I can rub my fingers over and focus on the sense of touch to calm down.

- **Listen to music.** I have play lists for different needs.
- **Favourite snacks.** I always have a few of my favourite snacks in the fridge (my favourite chocolate and my favourite non-alcohol drink)

I have made a physical toolbox with samples of everything I have mentioned above in it. When I am having a bad day I can open my toolbox and see what helps me.

**Everyone's mental health toolbox holds different tools.**

**Fill your toolbox with what works for you.**

When you recover or discover something that *nourishes your soul* and brings joy, care enough about yourself to make room for it in your life.

✧



## Mental Health Support

- Lifeline: 13 11 14
- Beyondblue: 1300 22 4636
- Suicide call back: 1300 659 467
- Living beyond Suicide: 1300 761 193
- Men's Health Line: 1300 789 978
- Parent Helpline: 1300 364 100
- Kids Helpline: 1800 55 1800
- Rural & Remote Mental Health 1300 515 951

# Sundays at Milang Station 12 to 4



Devonshire Teas \$6  
Hamburgers \$8  
Steak Sandwich \$8  
Cappuchino \$4  
Iced Coffee \$5  
Cheese Dog \$4  
And lots more ...



Plus Craft Shop  
& Free Train Rides

Open on Saturdays  
12 - 4 Displays Only



**Volunteers needed for maintenance, train driving, guides, cafeteria staff, etc.**

**[www.milangrailway.org.au](http://www.milangrailway.org.au) or 0414 232 060**

## Lakeside Men's Shed

at the oval

**BBQ every Thursday (donation)**

**From 12:00 noon**

Come and experience our relaxed atmosphere and share yarns with other like-minded people.

Take the opportunity to check out the Men's Shed facilities and current projects.

The Lakeside Men's Shed is working to assist in men's mental health issues and is supported by SA Health and the local community.



## DOG WASH AND DRY SERVICE

MILANG



I have a hydro bath sitting in my garage that is used only once a month a waste really. I am happy to provide a wash and dry service for locals as long as an owner stays.

I am not a professional groomer but I am more than happy to wash and dry your dog to save your backs, or for those where it's all become too much. I have been told that \$25 is a fair price and a little cheaper for smaller dogs.

If you would like to have this service, please

**TXT or CALL ME**

**Ros 0431 390 972**



# All Aboard—April 2023

## The Easter Fair

The Easter Fair was a big success and we all thank John Whyte and MADCA for organising it. The railway museum had a good day and made enough to cover the cost of the recent termite treatment we had to have in the station building. Our free train rides were very popular and we carried five hundred and two passengers on sixty one trips in the day ... a new record by miles.

A major contribution to the numbers was the arrival of a Kombi car club who used our train to commute between the Fair and their forty eight Kombis.



And more cars are coming on Saturday May 6<sup>th</sup>. Expect to see fifty cars from the National Ford 8 & 10 Sidevalve Rally down at the station.

## The South Australian History Festival

On Sunday 7<sup>th</sup> May we have a history event at the station at 2pm. It will start with a slideshow and video presentation describing the light railways of South Australia. This will be in the Cafeteria Car and will last about forty five minutes. It will be followed by a conducted tour of the Light Railway Centre, demonstration runs of our narrow gauge locomotives and then free train rides. The event is free and bookings can be made by contacting the secretary below.

There used to be seven hundred in the state and many were quirky. One of my favourites is the Sorrell's quarry railway at Finnis which used a converted Morris Minor for motive power.



To book please contact Peter Lucas on 0414 232 060 or [secretary@milangrailway.org.au](mailto:secretary@milangrailway.org.au)

*Regards*

*Peter Lucas*

*Secretary Milang Railway Museum*

*Phone: 0414 232 060*

*Web site: [www.milangrailway.org.au](http://www.milangrailway.org.au)*

## Cedric Varcoe Workshop



A group of 7 enjoyed learning more about Ngarrindjeri culture with Cedric Varcoe on April 22nd at the Ace Space.

Ngarrindjeri people have strong cultural and spiritual connections to every part of their country (Ruwe). Particular animals and plants are the Ngartji (totem or special friend) and the Ngarrindjeri have a special responsibility to care for their Ngartji.

Cedric shared the information about Ngartjis and then participants gathered up all sorts of materials to create animals and plants of the region.

*Karyn Bradford*



## Milang CFS News

*by Kerri Law*

On Saturday 1<sup>st</sup> April, Milang CFS participated in an Interagency Training Day with volunteers from Milang CFS, Strathalbyn CFS, Langhorne Creek CFS, Clayton Bay CFS and SA Ambulance Service Strathalbyn.

The volunteers' skills were tested with three scenarios working closely with SAAS on patient care, scene safety, and tricky extrications of patients.

One scenario involved a female who had her arm trapped in an auger. Those living and working on farms can appreciate this simulation, as it can easily mirror a real-life traumatic event, with volunteers competently managing the bleeding control and extrication of the limb. There was a focus on safely working around farm machinery.

The second scenario involved a farmer with chest pains in the cab of a header. The volunteers quickly identified that this patient was medically unstable, and both agencies worked together to safely extricate this patient out of this difficult location, while closely monitoring patient and ready to intervene clinically if required.

The final scenario consisted of a farmer who was overcome with fumes working on machinery in a confined space. With this patient, the added complexity was the chemicals. Volunteers displayed exceptional understanding of the safety aspects of this incident for both themselves, and the patient.

Overall, this day was a great opportunity to build on existing solid working relationships between agencies, with all having a passion for making a difference within our community.

A massive thank you to the McInnes family for use of machinery and their farm, to Chris Cotton and Thamsin Dunn from SAAS for being heavily involved with all the organising, along with paramedics Natarsha Ströher, Kristian Cook, Annika Leslie, and Tom Theel, along with Regional Co-ordinator from SA Ambulance Communications Centre Brad Mathew and MFS firefighter Brianna Schmid, and HAZMAT expert Jarryd Pfeiffer. Many thanks to this great team for volunteering their time to help develop the skills of volunteers in our region.

*[The CFS brigades involved in this special training day sincerely thank Kerri Law for all her work in making this event happen]*



# Southern Districts Flying Club

A handful of new students working through their lessons and making the most of the autumn weather before winter sets in. Plenty of pilots out local flying and the odd Saturday morning breakfast at the airfield was the norm throughout the past month. No big events, long flights or special social functions.

After a busy start to the year and our big flight over to Avalon it was good to have a more relaxed month enjoying our local area. Watching the land change colours and the water levels in the lake slowly drop. We consider ourselves very lucky to be located at the Strathalbyn airfield and able to fly over such beautiful countryside.



The club's AGM is set for Sunday the 21<sup>st</sup> May in our clubrooms. The AGM is not always the most exciting of meetings but important nonetheless. A few of our office bearers want to step aside after many years of service. With luck we can fill these positions with some of our newer, younger members.

End of May and we are planning a Wings & Wheels breakfast at the airfield with a number of vintage and veteran aircraft flying in to join cars of a similar age driving in. The technology of the cars and aircraft of that era are very similar and always good to see these vehicles still operating in today's fast-paced world. If you are a local resident with an old car or motorbike and would like to drive in and join us for breakfast contact our club captain for more details: Mark Divito 0403 285 478

## Come Fly With Us!



Operating from Strathalbyn Airfield

What better way to experience the thrill of flight than to have a Trial Flight with one of our qualified instructors in a Gyroplane? Experience first hand the freedom of flight as you take the controls under the guidance of your instructor.

### Gift Vouchers Available

For bookings or further information contact Larry:  
0408 815 094



[www.airsports.com.au](http://www.airsports.com.au)



### *1933 Riley Special*

Another couple of events being organized for June include a group flight to Robe for a camp out. We will also host a CASA safety seminar at Strathalbyn mid June.

Membership to Southern Districts Flying Club is open to anyone with an interest in aviation. If you would like to be involved you can find information and membership details on our web site: [www.sdfc.org.au](http://www.sdfc.org.au)

# MEC NEWS - April 2023

## MILANG ENVIRONMENT CENTRE

corner of Weeroona Drive and Jupiter Street Milang.

P O Box 338 Milang SA 5256 Ph:85370201

Email: [mecinc@adam.com.au](mailto:mecinc@adam.com.au)

**OPEN: 10 AM – 4 PM WEDNESDAY & SATURDAY**

### THE DEPRESSOR

The Milang Environment Centre recycles an enormous amount of drinking containers including cans, cartons, glass and plastic bottles. These drink containers are brought to MEC by local residents and collected from major consumption sites such as the Milang Caravan Park and Pier Hotel. MEC pays the required deposit on each container in cash. Glass bottles are counted and sorted into colours: green, clear and brown. Cans, cartons and plastic bottles are first counted then must be crushed in a machine known affectionately at MEC as 'THE DEPRESSOR'. After being crushed these drink containers are stored in various size bales such as 500 plastic bottles, 1500 soft drink cans and 800 beer cans.

'The Depressor' is an essential part of the machinery needed for MEC to effectively serve the community as a recycle centre. According to MEC's Boss Dinosaur, Don Boyce the crushing machine works very hard each Wednesday and Saturday to process the large amount of recyclable drink containers brought in from the local region. The machine is centrally located in the heart of the MEC operations shed where bales for each type of drink container are fitted to mobile frames that are placed in front of the door of 'The Depressor' so that the crushed items may fall directly from the machine into the correct bale (beer cans, soft drink cans, plastic bottles, cartons).

The number of crushed items is recorded until the bale is full to the prescribed amount. Full bales are loaded onto the MEC truck and transported to large commercial recycling centres north of Adelaide. MEC is paid for the bulk recycle items and uses the money earned to meet expenses and sponsor various local community projects. For example, in April MEC donated to assist the Friends of The Milang Cemetery, a small local group who work

hard to keep the cemetery clean and tidy, re-claim tombstones, rehabilitate graves, install & maintain historical information and a site guide display.

The drink container crushing machine is a strong reinforced steel box with a hydraulic driven shaft which pushes a steel wall from the rear toward the front door and crushing the items in the process. MEC volunteers (aka 'dinosaurs') describe the sound made by items being crushed as a little "unsettling".

The machine is operated by a volunteer using a simple control panel with three push buttons; forward - stop and back. Instructions are shown in German, English and French. MEC bought 'The Depressor' crushing machine second hand. The machine is an IDEAL-WERK 6006 built in Balingen, West Germany in 1991. "Balingen is a town in Baden-Württemberg, Germany, capital of the district of Zollernalbkreis. It is located 70 km south southwest of Stuttgart. It is home to the Bizerba and Ideal companies." *Wikipedia*

An MEC source who preferred to remain anonymous, told Milang News that a new volunteer who joined the team in November 2021 likes operating 'The Depressor' so much that he almost demands exclusive rights to the IDEAL 6006. "It is a bit embarrassing", said the source, "Once this guy gets onto the steps of the machine and starts operating it, he will not come off unless he fears he will miss out on Lyla the Cake Lady's latest offering of fresh baked cake."

The Milang Environment Centre is a volunteer run organisation that provides a valuable community service paying for deposit drink containers, accepting green garden organics, glass, and metal waste for modest fees. Funds earned by MEC are used to sponsor and support local community projects.

**Anyone interested in being a volunteer, learning about recycling, using machinery at the centre, and having fun meeting local residents from the wider region, please contact MEC by phone or email or call in personally Wednesday or Saturday.**



**PHOTO 1:** The MEC 'Depressor' – ready to be loaded with drink containers for crushing. Note the bales of crushed containers at the left side.



**PHOTO 2:** The Depressor main chamber empty with hydraulic shaft reversed to the back



**PHOTO 3:** MEC Boss Dinosaur Don Boyce shows how items are loaded into 'The Depressor' chamber



**PHOTO 4:** Soft Drink Cans loaded into 'The Depressor' chamber ready for crushing between the rear and front doors



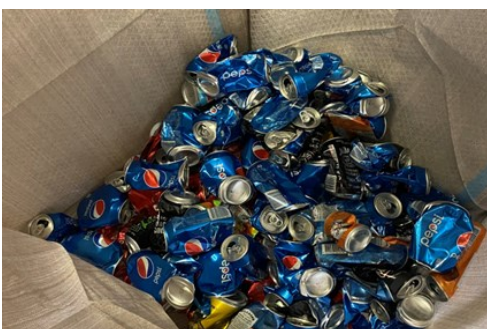
**PHOTO 5:** MEC Boss Dinosaur Don Boyce starts 'The Depressor' hydraulic shaft by pushing the forward button and muttering in German, English or French



**PHOTO 6:** 'The Depressor' hydraulic shaft has crushed the cans between the back and rear doors



**PHOTO 7:** The crushed Soft Drink Cans are now ready to fall into the storage bale



**PHOTO 8:** The crushed Soft Drink Cans now in the bale positioned below 'The Depressor' front door



**PHOTO 9:** 'The Depressor' now empty and ready to start crushing more drink containers

**Milang Environmental Centre**  
Serving our community

The Milang Environmental Centre is a community run organisation and an asset to the residents of Milang.  
Ph **Don 0423 105 261** or **Chris 0411 474 529**

**Services:**

- Recycling depot for glass, plastics, metal and garden organics.
- Bottles and cans deposit paid.
- Recycled items for sale.
- Electronics, household and garden wastes incur a fee.

**Hours: Wednesday and Saturday 10am - 4pm**

**Corner of Weeroona Drive and Jupiter Street MILANG**

# BUTTER FACTORY REPORT

## April 2023

April has been our busiest month this year. As reported last month the container arrived, so one of our working bees was dedicated to emptying the Cottage. We made many trips with sack-trucks and wheelbarrows while Karyn and Stuart went through the piles of paperwork and documents that have been stored in the Cottage over the years. When finished for the day we had several neat piles left to recycle and shred, with still quite a lot of room left in the container. The job was finished last week when the kitchen was emptied and the old carpet was removed from the front room ready for wiring floor treatments and painting. From now on the site office and morning tea will be in the Butter Factory.

The volunteers have continued painting in the old section as well as starting to arrange the shelving in the museum / engine shed ready for displaying our treasures such as they are.

The fume canopy in the old section which was too low was raised up higher, so now the floor space below it can be used safely.

On the contractor front, the Cottage has been cleared underneath, the holes have been dug for the new stump footings. The Cottage needed leveling so many jacks were employed so when the footings are concreted in the old girl will be on the level so to speak. At the rear of the Cottage the old septic tank was pumped out then removed. The cottage toilet is currently decommissioned and we thank George McInnes who has loaned us a portaloos while the new toilets are under construction.

Just last week our plumber has laid some of the pipework for the new toilet block while there was a massive hole dug for the new septic tank and also another hole for the grease trap tank servicing the new kitchen. The tanks are due to be delivered on May 1st, then craned into place and connected up. With all the earthworks, the old water pipes have been disconnected we will have new services to both buildings all the way from the meter.

Dave Elliott has been busy in the Cottage with constructing the hallway to the toilets and getting ready for the appliance connections incorporating shelving and a handwashing sink alcove.

Our thanks to the volunteers who have shifted so much stuff lately it's mindboggling. A great big shoutout to the Already Read Books crew, a very successful Easter and open weekends this month, its much appreciated. Serious monies have been raised while also raising the profile of the Butter Factory for visitors to our town.

*Cheers*

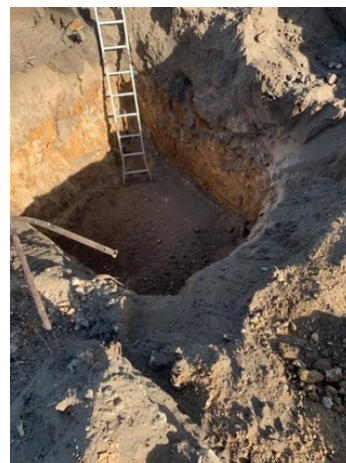
**John Bradford**  
**Site Manager**

*Removal of old septic tank*



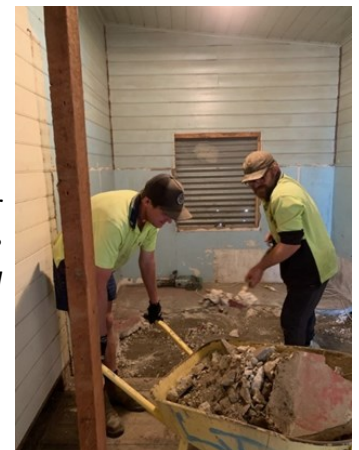
*Fraser jack hammering concrete wall*

*New toilet pipe work*



*Hole for new septic — about 12 foot dee*

*Angus and Fraser removing the concrete floor in the old bathroom.*



# NO. 10 CREAM AND MILK SUPPLIERS TO MILANG BUTTER FACTORY

## ROBERT 'BOB' WOOLFITT

*Alvyn Hopgood*

Mr and Mrs Bob Woolfitt's property was situated approximately two kilometres west of Milang and consisted of around 530 acres.

This property has the Sandergrove Creek running through it, which begins in the Sandergrove area and runs through quite a lot of properties until it spills into Lake Alexandrina approximately one kilometre down the Point Sturt Road, south of Milang. Sandergrove Creek only runs about every six years but has been known to run in successive years on a few occasions. Ducks, swans and other bird life soon move into the area when the creek is running.

I think the Woolfitt property was first owned by Bill Day. After the Woolfitt's sold it, it was divided up and then owned by the Brown, Koch and Saltmarsh families.

The Woolfitts had two children, John and Kathleen, who assisted in the farm work. John stayed on the property for his working life.

The Woolfitt's had between 30 and 40 dairy cows. They bred heifer calves to replace the milking herd. The Woolfitt's dairy produced a large quantity of cream and milk, which was transported to the Milang Butter Factory for processing.



During the 1940s, I remember the Church of Christ Sunday School annual picnics were often held on the Woolfitt property. The children were transported from the Milang Church by horse and four wheeled trollies, with the driver sitting in an elevated seat up front. Two of the drivers were Eric Overall and Gordon Wilson. I believe the trollies and horses came from the Goldsworth and Varcoe farms. During the picnic day at the picnic, the children were excited to see the cows milked. Mr Bob Woolfitt was quite a character and didn't mind the children being around at milking time, as long as they did as they were told – if they misbehaved, *look out!*

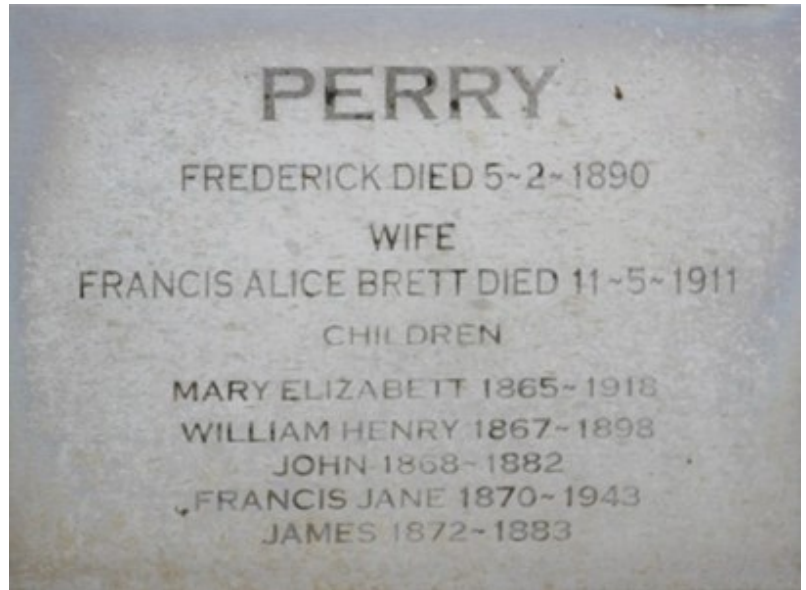
Farms with livestock always had to stockpile plenty of hay and grain for the animals, especially milking cows, which the Woolfitt's did in a grand way. Their livestock were always in top condition.

# HISTORIC GRAVES IN THE MILANG CEMETERY

## No. 25— PERRY

*By Mervyn Hopgood*

George Perry (Snr) was born 10<sup>th</sup> May 1842 married Christina Mc Donald born 7<sup>th</sup> February 1844. They were both heavily involved with the Salvation Army most of their lives and were quite talented musically as were most of the Perry's at that time. George was a carpenter by trade and assisted in the building of river boats. The red gum used in these boats was from Langhorne Creek along the banks of the River Bremer. Christina died in 1920 and is buried in the Milang Cemetery, George died in 1925 and is buried at Stawell in Victoria.



Their 5<sup>th</sup> child William was born in 1871 and lived at Milang most of his life except his younger years when he was in Victoria. While in Victoria he became an expert in breaking in bullocks used for land clearing and dam sinking. They grew reasonable crops but had to transport the grain to railway sidings 14 miles away. His wife was a tower of strength to him during this time helping him with much of the outdoor work as well as caring for the children. It is not sure why they moved back to Milang in 1920 but in doing so they purchased 'The Pinery' about 1200 acres, later selling off one third.

William became heavily involved in town affairs, was a Councillor and Justice of the Peace, drove the school bus to Strathalbyn High School and for a while ran a boat service across the Lake. He and his wife lived in a big stone house on the corner of Coxe and Watson Streets. A Dentist and Doctors had one front room for consulting when I was a young child. William died in 1954 and his wife in 1963. Of their children Edgar the 2<sup>nd</sup> eldest married Eileen Ada Pavy and their story has been written about in the Pavy history. Their eldest child Douglas William was handicapped and spent most of his time in Minda Home but always had a positive outlook on life and was greatly loved by all of the staff. He lived until he was 85 years old.

The 2<sup>nd</sup> child of Edgar and Eileen was Marjorie and she married William Quinn. William served in the Second World War, on returning he became involved in the building trade. The Besser Block building on the Milang Oval were mainly built by him, local men laboured for him and all Williams work was free. Later on, William and Marjorie took over the Pier Hotel in Milang and it became a popular venue.

The 3<sup>rd</sup> child of William and Elizabeth was Joan Lorrain who married James (Jim) Williams. They took over Ferguson's Garage and had it for quite a few years. Gavin (Jubby) Rankine worked for them. Betty Eileen was their 4<sup>th</sup> child and she married Maxwell Jacobs and the couple had seven children. Colin Edgar was the 5<sup>th</sup> child of William and Elizabeth. Colin worked for Fred Minchim (Dairy Farmer) on the north-eastern end of the town for some years. They were the first to grow potatoes in the area under irrigation. Colin married Margaret Smith and the couple had six children. Gladys Jean was their 6<sup>th</sup> child and she married Geoffrey Williams and the couple had 3 children.



Their 7<sup>th</sup> child was Desmond Thomas of whom I knew quite well. He was a couple of years younger than me and we spent quite a bit of time together. I remember one night while spotlighting rabbits on Landseer's property Des got thrown out of the utility and his absence wasn't noticed for a while. We later rounded him up, unhurt but very lucky, he was also a regular at the dart meetings we used to hold. Des tried his hand at quite a few jobs in the area and was an honest and reliable worker.

The eldest child of William and Elizabeth was Lewis Strout and the couple had four children. Ronald who moved to NSW (Coffs Harbour) I think was the eldest, then came Joyce Hilda who married Laurance Collett and they lived in Strathalbyn for most of their lives. The two youngest were Allan and Angus Allen born 7<sup>th</sup> November 1928. On leaving school he worked on the farm for a while before working for Scott's Transport doing interstate driving when Scott's moved to the south east. Allan purchased a truck of his own and continued to drive for a short time before returning to the family farm. Allan was a keen footballer and cricketer and also a good lawn bowler and President of the Milang Club a few years.

Angus the youngest born 19<sup>th</sup> February 1932 worked all his life on the family farm and later share cropped farms in the district, he played football for Milang. In later years he joined the St. John Ambulance Service and served in that capacity for quite a few years. Angus and his wife Eileen bought a caravan in later life and journeyed much of Australia until ill health brought that to a close.

There are 11 Perry's buried in the Milang Cemetery.



*Photo courtesy of Christine Danton*

# LAKES HOME CARE

Lakes Home Care can help you with your daily activities to make life easier and give you more time for you. Call us today on 85370687

- Gardening
- Housework
- Shopping
- Transport
- Medical Appointments
- Equipment



## Church Services—Milang and surrounding areas

**Church Of Christ**, corner of Watson & Coxe Streets , Milang

Enquiries—Peter Wilson 0407 607 638

Sunday Service 9:30am

Friendship & Craft at the Church Hall—Wednesday 10:00am—12:00 Noon

**Uniting Church**, corner McDonald & Orana Streets, Milang

Enquiries—Nola Deer 8536 4429

Sunday Service 10.00am

**Anglican Church—St Marys**, corner Luard & Maroo Streets , Milang

Enquiries—Rev. Alex Stone 0405 084 794

Sunday Service—8.15am (1st and 3rd Sundays of the month)

### Lutheran Church

Cnr Commercial Road & North Parade, Strathalbyn

Pastor Matthew Edgecomb 8536 3322

**Catholic Church—Good Shepherd**, East Terrace, Strathalbyn

Father Richard Morris 8391 1053



# Milang Community Garden

## Newsletter - May 2023

The garden has been buzzing with activity again this month. Autumn is a time for harvesting the remaining fruit, namely apples and pears which have produced a good crop. Quinces are loaded on the tree and the fig tree has given those who enjoy it's fruit, a small but consistent feed!



Pumpkins and the spectacular tromboncos are ripening and finishing. Tomatoes have continued to bear and ripen late into the season. The Tommy-toes have been particularly successful during this somewhat odd and cool season.

Cleaning up the garden has been a focus these past weeks and our gardeners have really got into it. We have some newer members which means our numbers enable us to choose several specific projects and finish them.

The herb garden is looking neat and productive, the tunnel is getting a complete overhaul and the potted plant section is now protected with a netting cover and extended to house the, growing collection of succulents and other plants.



The composting system is expertly organised and working well. Green waste is also recycled by our worms and a weed fermenting tank that produces a lovely stinky nutritious tea that is used as an organic fertiliser.

Our keen gardeners have cleaned up the wood around the fence lines. The flower and native gardens areas are doing well, adding another aspect to the now large and productive community garden. All in all, a lovely environment with a bunch of happy gardeners sharing



their talents and knowledge that keeps the garden ticking along!

"There is an oversupply of fire wood ...kindling and small pieces. Will be selling off bags. Please drop into the garden on Tuesday morning, if you are interested. Contact - Georgie 0403353454. "

New gardeners learn  
by trowel and error



## TRIVIA ANSWERS

From Page 8

*By Jude Aquilina*



1. Portagaff is made from stout with a dash of lemonade
2. The song *Get me to the Church on Time* is from the musical *My Fair Lady*
3. Gawler is the oldest country town in SA
4. Dutch courage is courage inspired by drinking alcohol
5. The giant armadillo has the most teeth of any mammal (100 teeth)
6. Circular Quay is in Sydney
7. The Kurna people are the traditional owners of the Adelaide Plains
8. Otitis is inflammation of the ear
9. Leonard Cohen
10. The mosquito is the deadliest creature, causing almost a million deaths each year



# asis

## Gardens Function Centre

726 Langhorne Creek Road

Belvedere 5255

8536 4815

[www.ogfc.com.au](http://www.ogfc.com.au)

Email: [info@ogfc.com.au](mailto:info@ogfc.com.au)



### Restaurant + Function Centre

Nestled within a lush Tropical Garden situated between Strathalbyn and Langhorne Creek. Excellent food, wonderful service in a very unique, private setting.



Open Thursday to Sunday  
726 Langhorne Creek Rd, Belvedere SA  
Bookings: 8536 4815 [www.ogfc.com.au](http://www.ogfc.com.au)



Mother's Day is on  
Sunday 14th May.  
Book early to avoid  
disappointment and  
the menu can be  
viewed on the website.



\$15.90 Thursday and Friday  
special Lunches



Inside our restaurant

**SATURDAY, 24TH JUNE**

# DINNER CONCERT

**OASIS GARDENS FUNCTION CENTRE**

FEATURING  
**THE HARMUMMIES**

**6:00PM** TWO COURSE MENU \$49.90PP

726 Langhorne Creek Rd, Belvedere

**BOOKINGS ESSENTIAL**

For Bookings contact (08) 8536 4815 [oasiscgardensfunctioncentre.com.au](http://oasiscgardensfunctioncentre.com.au)



Recycling for the future

# Strathalbyn RECYCLING

15 Dry Plains Road, Strathalbyn. Ph 85363999

- **Pays cash for all 10c deposit items**
- **Also accepting – non deposit glass such as jars and wine bottles, paper, cardboard, scrap metal, non deposit plastics with no's 1,2 & 5 inside the recycling triangle & clear soft plastic.**

## Trading hours

- Tuesday 9am-4pm
- Wednesday 9am-12pm
- Thursday 9am-4pm
- Saturday 9am-1pm
- Closed all public holidays



Recycling for the future

# Murray Bridge RECYCLING

55 Thomas Street, Murray Bridge. Ph 85324551

## Trading hours

- Monday to Friday 8am-5.30pm
- Saturday 8am-12.30pm
- Closed public holidays



**Murray Bridge Recycling can provide Waste, Recycling and Document Destruction collections for home and business in the following areas:**

**Murray Bridge, Mannum, Tailem Bend, Mt Barker, Strathalbyn, Milang and Langhorne Creek.**

**Call Todd on 0419 829 050 for more information or to organise a quote for a bin to suit your needs.**



# David Basham MP

Member for Finniss



We are bringing the 'office' to you...

## Finniss General Store

Friday 12 May 10.30am -11.30am

## The Dish on Fleurieu

Friday 19 May 10:30am-11:30am

## Clayton Bay Cuppa and Chat

Wednesday 24 May 1.00pm - 2.00pm



Join David Basham MP to ask a question or discuss what matters to you and your community.

To book an alternative time, please contact the Finniss Electorate Office 08 8552 2152 or [finniss@parliament.sa.gov.au](mailto:finniss@parliament.sa.gov.au)



## Rebekha Sharkie MP

Federal Member for Mayo

## South Coast office

26 Hindmarsh Road, McCracken  
Tuesday and Thursday, 9.30am to 4.30pm  
08 8398 5566



**SOUTH COAST OFFICE  
NOW OPEN  
TUESDAY & THURSDAY  
9.30AM TO 4.30PM**

Authorised by Rebekha Sharkie, Unit 3, Barker Plaza, 26-28 Hutchinson St, Mount Barker, SA, 5251

**Wizard Pharmacy - Strathalbyn**  
**High Street Pharmacy (Strathalbyn)**

**Milang Community Chemist**

(Milang is open Monday to Friday 1pm-5pm)

**Call 8537 0785 or 8536 2266 (Strathalbyn Amcal)**

**Expert advice on health issues**



*New Art Classes*  
coming 2nd Term 2023

- Beginners
- Intermediate
- General

**Clayton Bay & Strathalbyn**

Register your interest:  
**online:** [maearts.com.au](http://maearts.com.au)  
**email:** [melkin@adam.com.au](mailto:melkin@adam.com.au)  
**or phone:** 0401 839 592  
*(local artist: Madeleine Elkin)*

**ROB WHEATLEY**  
**CONSTRUCTIONAL**  
**STONEMASON**

**0438 584 586**

Over 25 YEARS EXPERIENCE

SPECIALISE IN MATCHING  
EXISTING STONEMASONRY

**RUINS RESTORATION • REPOINTING**  
**RETAINING WALLS • SLATE PAVING**  
**CRACK REPAIR • UNDER SETTING**  
**FEATURE WALLS • FIREPLACES**

WE WILL TRAVEL

# Milang Lakeside Caravan Park

National Tourism Industry

Accredited Park

## PARK FACILITIES

- ◆ Pet friendly
- ◆ Boom gate
- ◆ Kiosk
- ◆ BBQ undercover area
- ◆ Ensuite cabins
- ◆ Standard cabins
- ◆ On-site vans
- ◆ Powered sites with sullage
- ◆ Unpowered sites
- ◆ Van storage
- ◆ Dump point
- ◆ Full tourist information
- ◆ Happy friendly service

**Owners—Bob & Betty**

**PH 08 8537 0282**

**1 Woodrow Drive, Milang SA 5256**

Email [milangpark@bigpond.com](mailto:milangpark@bigpond.com)

<https://www.milangcaravanpark.com.au>



**'Life is Good at the Lake'**

## Milang Lakes Motel

Enjoy a delightful stay in a lakeside setting. Milang is a beautiful, friendly and historic town with nearby wineries and towns to explore.

5 Daranda Terrace, Milang SA

**08 8537 0090**

[www.milanglakesmotel.com.au](http://www.milanglakesmotel.com.au)



Mobility Scooters

Wheelchairs

Batteries

LED Lighting

Camping Accessories

Health Care Products

Solar Panels

Servicing and Repairs



### 12 Volt Sales

6a Rankine Street Strathalbyn

**Phone: 8536 2144**

[www.12VoltSales.com.au](http://www.12VoltSales.com.au)



## Local Plumbing & Gas Fitting

Reliable - Friendly - Affordable

\*After Hours Emergency

\*All domestic plumbing repairs

\*Hot water \*Repair/Replace

\*Gas Fitting \*New/Existing

\*Rain water & pumps

\*All marine & mobile homes

\*Gas catering equipment

Call Andy or Jay:

**0408 807 212**

Alexandrina Plumbing/Lic. 4925





**Milang Post Office**  
 18 Luard St,  
 Milang SA 5256  
 Ph (08) 8537 0061



- \* Banking Agents
- \* International Currency
- \* Cash and Master Cards
- \* Inter flora Agent
- \* Western Union Agent
- \* Full Range of Stationary & Gifts
- \* Parcel Service



**Bookings 8537 3010**

Fine Beer

Great Food

Great Wines



**Tuesday:**  
 Bar opens 4pm to 8.30pm  
 Meals 5.30pm to 7.30pm

**Wednesday to Saturday:**  
 Bar opens 11.30am to 9.00pm  
 Meals 11.30 am to 2pm and 5.30pm to 8pm

**Sunday:**  
 Bar opens 11.30am to 8.30pm  
 Meals 11.30am to 2pm and 5.30pm to 7.30pm

**Schnitzel night Thursday nights**  
 5.30pm - 8pm

## FEEL HEALTHIER NATURALLY

Louise Armitage qualified Bowen Therapist and Homeopath  
 Bowen Technique-gentle bodywork for all muscle pain

Homoeopathy-for all common health conditions

Around 20 years experience; health fund rebates may apply

14 Albyn Tce Strathalbyn and also Milang

Ph (Bus) 8536 8070 for more info  
[www.lahomeopathy.com.au](http://www.lahomeopathy.com.au)

## Josh Harris Painting

Phone: 0401 295 528

email: [josh1992harris@gmail.com](mailto:josh1992harris@gmail.com)

**No job too BIG or too small**

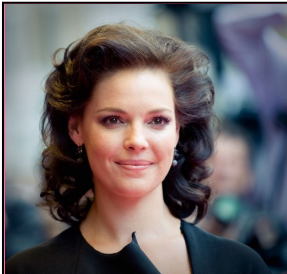


Builders Licence: BLD2895080

BN: 71216907419

White card: 40161-GP-00000302-0

EWP: YC112064



## Julie's Hair About Town

Hair care for all the family

By appointment only

Cutting | Colouring | Perming

Ph 0413 318 663



## LAKESIDE CURTAINS

### CARAVAN CURTAINS & SOFT FURNISHING

Unit 3, 10-17 Daranda Terrace, Milang  
 0413 803 797

Call Ivy for a made to measure to replace those nasty old curtains and cushions / seating for your caravan.



**LANGHORNE CREEK SA**  
 'GENERAL STORE'

Open

Monday to Friday 6:00am – 4:00pm  
 Saturday 8:00am – 2:00pm

Freshly cooked meals, sandwiches, salads and pies, locally roasted coffee and cold drinks, general grocery items and local produce. Catering for events available (24 hours notice)

P 8537 3023 E [gday@langhornecreekstore.com.au](mailto:gday@langhornecreekstore.com.au)  
[www.langhorncreekstore.com.au](http://www.langhorncreekstore.com.au)

## May and Co

### Hair and Beauty

Shop 5, 10-17 Daranda Tce. Milang

Call for an appointment 0439 177 151

- Male and female haircuts
- Hair colouring
- Hair styling
- Eyelash extensions



## Milang Auto Repairs

- ⇒ Fuels / Lubricants
- ⇒ Logbook Servicing / All Mechanical Repairs
- ⇒ All Models / Cars / Diesels / Commercial / Bikes
- ⇒ Tyres / Electronic Tune-Ups
- ⇒ Large range of hardware and fittings

27 Watson Street  
Milang  
**8537 0005**



## Milang Bakery

29 Luard Street Milang

Open Mon-Fri 6:30am-4:30pm / Sat 6:30-3pm / Sun 8:45am-3pm

Pies, Pasties, Cakes, Bread, Rolls, Pastries

Party Orders Welcome Ph 08 8537 0086



## Milang Mini Mart

PH 8537 0801

Open 8am to 8pm Mon – Sunday

Shop 9, 10-17 Daranda Terrace, MILANG

Groceries	Hamburgers	Sandwiches & Rolls
Fresh Meat	Hot Dogs	Pies & Pasties
Fruit & Veg	Mahalia Coffee	Cakes & Pastries
Fresh Fish	Fleurieu Milk	Ice

'Friendly Staff'

*Sandy and Michael Moar*



## Port Milang Café

Shop 1 Daranda Tce MILANG



Monday –Saturday 8am-7pm  
Sunday and Public Holidays 8am-7pm  
Phone orders welcome!

**8537 0146**

**Tess & Paddy are always there  
to welcome you**

- \* Hot chicken
- \* Fish & chips
- \* Burgers
- \* Espresso coffee
- \* Newspapers
- \* Dine in and take away
- \* Range of drinks
- \* Milk

## Strath Corner Bakery

8536 3570

Mon-Fri - 6am-5pm

Sat & Sun- 7am-5pm



3/1 Dawson St, Strathalbyn



Baked daily, a full rang of pies, pasties, sausage rolls, quiches, cakes, fresh rolls and sandwiches. Coffee, tea, hot chocolate and a full range of cold drinks and juices.

*A great place to enjoy a snack or lunch.*

## Stratton Earth Movers & Drainage

Jon Stratton

**0417 801 138**

PO Box 340

Milang SA 5256

[jstratton68@gmail.com](mailto:jstratton68@gmail.com)



*The*  
**OFFICE**  
*Shop*

Locally owned since 1989,  
old fashioned face to face  
friendly service

14 Coral Street Victor Harbor 5211

t: 08 8552 2177

e: [sales@theofficeshopvh.com.au](mailto:sales@theofficeshopvh.com.au)

w: [www.officeshopvictor.com.au](http://www.officeshopvictor.com.au)

- \* Mobile Device Centre - Sales - Helpdesk - Accessories & Repairs
- \* Phone Bill Health Checks \* Stationary Supplies \* Toners & Inks
- \* Business cards \* Office furniture and much much more



Would you like to advertise in this space?

If so, please contact

**John Whyte**

Email: [john.whyte.milang@gmail.com](mailto:john.whyte.milang@gmail.com)

**0431 601 850**





# What's on in our region for May 2023



All of May		Celebrate History Month in May at Woodburn Estate with “High Tea and History”. This unique experience includes a tour of this historic homestead, highlighting its beginnings as a family home to the its present day as a multi award-winning destination wedding venue, welcoming thousands of guests every year. Enjoy a high tea of delicious treats and pot of tea, and a glass of bubbles or two. \$50pp – purchase from <a href="https://woodburnhomestead.rezdy.com/551288/high-tea-and-history">https://woodburnhomestead.rezdy.com/551288/high-tea-and-history</a> or call 0414 618 433 to enquire.
Friday	5th	The Strathalbyn Woodshed commences its free course of three sessions on “Introduction to Woodwork for Older People” on Friday 5 May, followed by Fridays 12 and 19 May. from 9am til 12pm – includes morning tea. This is your chance to learn new fun skills in a relaxed setting, with help, by completing a simple woodwork project you get to keep. Beginners welcome! Please call Strath Neighbourhood Centre to register your interest 0431 337 044 (info session available 10am on Friday 21 April).
Saturday	6th	ALL READY READ BOOKS - Milang Lakeside Butter Factory - 10am to 3pm
Sunday	7th	A new running event South Bremer Trails is happening in Langhorne Creek on Sunday 7 May, starting and finishing at Kimbolton Wines, with food, drink and music to kick-start your recovery. Three distances to choose from – 23km, 15km and 8km, all through beautiful wine country. Register at <a href="https://www.southbremertrails.com/">https://www.southbremertrails.com/</a>
		ALL READY READ BOOKS - Milang Lakeside Butter Factory - 10am to 3pm
Saturday	13th	The Sulli-Vans are coming to the Milang Community Hall – BBQ at 11.30am, Show at 1pm. Don't miss this travelling family show with wonderful harmonic voices that everyone is talking about – as seen on The Voice. \$25pp, bookings from Glen 0401 638 464 or Norm 0428 222 042.
Sunday	14th	Cittaslow Goolwa Market - month 9am - 1pm, Jaralde Park Goolwa Wharf Precinct
Saturday	20th	ALL READY READ BOOKS - Milang Lakeside Butter Factory - 10am to 3pm
Sunday	21st	The Strathalbyn High Street Market will be held next to Gilberts Motor Museum. Fabulous stalls, music, and great Sausage Sizzle cooked up by the volunteers.
		ALL READY READ BOOKS - Milang Lakeside Butter Factory - 10am to 3pm
		Goolwa Wharf Market - 9am - 3pm, Jaralde Park Goolwa Wharf Precinct
Saturday	27th	An Indoor Concert featuring “Kelly’s Wayke” will perform at the Tooperang War Memorial Hall. Don't miss this lively 8 piece band who will have you tapping your feet and singing along! Bar opens 6.30pm (no BYO alcohol please), show begins 7.30pm. BYO nibbles/supper. Bookings – Jill 0409 693 748 or email <a href="mailto:clelands@activ8.com.au">clelands@activ8.com.au</a> . \$50pp
Sunday	28th	Cittaslow Goolwa Market - month 9am - 1pm, Jaralde Park Goolwa Wharf Precinct



*If you have an event that you would like to see listed here, please send the details to [editor@milang.org.au](mailto:editor@milang.org.au)*